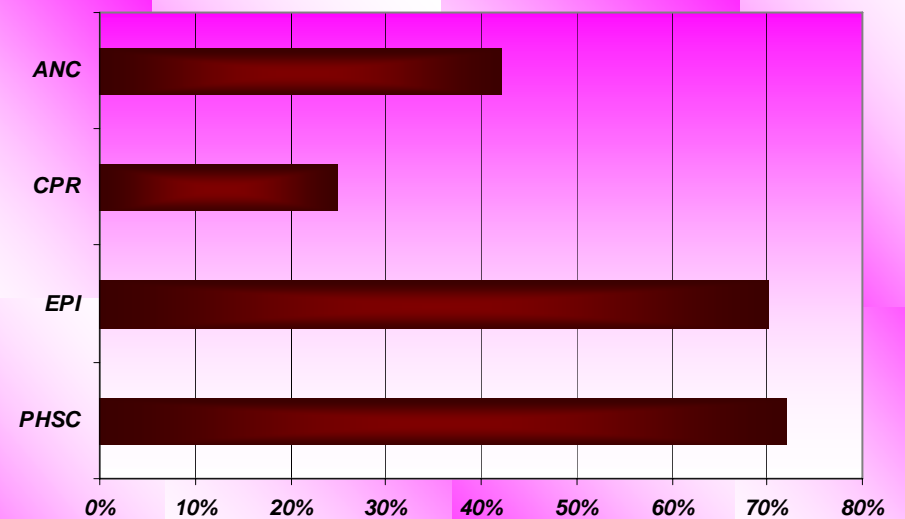




ፌዴራላዊ ዲሞክራሲያዊ ሪፐብሊክ ኢትዮጵያ
የጤና ሚኒስቴር

**Federal Democratic Republic of Ethiopia
Ministry of Health**

Health and Health Related **INDICATORS** 1997



8.3	Distribution of Nurses By Specialty, Region & Sex.....	31
8.4	Health Professionals Population Ratio By Region	32
9.	Budget Allocation & Expenditure	34
9.1	Recurrent Health Budget Allocation & Expenditure By Region, 1997	34
9.2	Capital Health Budget Allocation & Expenditure By Region, 1997	34
9.3	Public Health Expenditure Per Capita By Region, 1997	35
9.4	National Recurrent Budget Allocation & Expenditure 1981-1997	35
9.5	National Capital Budget Allocation & Expenditure 1981-1997.....	36
9.6	Public Health Expenditure per Capita (ETB), 1997	36
10.	Disease Statistics	37
10.1	Outpatient Visit & Admission Data, 1997	37
10.2	Number of Beds, Days Spent in Hospital, Discharges & Deaths, 1997.....	38
10.3	Diagnostic Services, 1997.....	39
10.4	Major & Minor Surgery Performed by Regions, 1997	40
10.5	Top 10 Leading Causes, 1997.....	41
10.5.1	Top 10 Leading Cause of Outpatient Visit, 1997.....	41
10.5.2	Top 10 Leading Cause of Admission, 1997	42
10.5.3	Top 10 Leading Cause of Deaths, 1997.....	43
10.6	Malaria Cases by Parasite Species	44
10.7	Tuberculosis and Leprosy.....	47
10.7.1	Tuberculosis Case Findings, 1997	47
10.7.2	Tuberculosis Treatment Results, 1997	48
10.7.3	Case Detection Rate of PTB+ by Regions, 1997	48
10.7.4	Number of Health Facilities Providing DOTS & MDT, 1997	49
10.7.5	Leprosy Case Findings, 1997	50
10.7.6	Leprosy Result of Treatment	51
10.8	National Surveillance System and Epidemic Report, 1997	52
10.8.1	Annual Report of Epidemic Diseases, 1997.....	52
10.8.2	IDS Report, 1997.....	52
10.9	Regional HIV/AIDS Estimated, 2004 G.C.....	55
11.	Output From Health Professional Training School	56
11.1	Summary of Graduates by Category	56
11.2	Distribution of Health Training Schools	57
11.3	Post Basic and Post Graduates.....	61
Glossary	62

Health and Health Related INDICATORS

1997 E.C. (2004/05 G.C.)

Planning and Programming Department
Health Information Processing & Documentation Team

Explanatory Notes

All years in this annual publication, unless otherwise stated, are in Ethiopian calendar.

The following symbols have been used in the tables throughout the report:

- A blank in a table indicates that the item is not applicable.
- A number in parenthesis () indicates a negative number.
- NA in a table indicates data is not available

Copyright © Planning and Programming Department, MOH

December 2005

Fax: (251) (11) 5512691

Phone: (251) (11) 5535938, 5505797, 5536294

e-mail: moh@ethionet.et

Website: www.fmoh-eth.org

TABLE OF CONTENTS

Preface	i
Acronyms.....	iii
Introduction	1
1. Summary Of Basic Health Indicators.....	3
2. Major Health Sector Development Targets & Achievement (1997).....	4
3. Demography & Vital Statistics.....	5
3.1 Some Demographic Indicators, 1997 E.C.....	5
3.2 Vital Statistics, 1993– 1998 (2000—2005 G.C.)	6
3.3 Demographic Data Estimates for Some Countries & Regions of the World 2005 G.C.....	7
4. Education & Economic Statistics.....	9
4.1 School Enrollment Ratio by level of schooling & Distribution of Literacy Rate, 2004 G.C.....	9
4.2 Socio-Economic Data, 1989-1997 G.C	11
5. Maternal & Child Health Services.....	12
5.1 Immunization Coverage By Antigen, 1997	12
5.2 Drop-out Rates of Routine EPI Activity, 1997	14
5.3 TT2+ Achievement & Coverage By Region, 1997	15
5.4 Maternal Health Services Achievement & Coverage By Region, 1997	17
5.5 Nutritional Status of Children & Mothers.....	18
5.6 Amount of Contraceptive Distributed by type of Contraceptive Method, 1997	20
5.7 Percentage of Contraceptive Users by Type of Contraceptive Method, 1997	21
6. Hygiene & Environmental Health Profile by Regions	22
6.1 Percentage Distribution of Household by source of drink water, 1997	22
6.2 Access to safe water & type of toilet facility	22
6.3 Distribution of Household by type of toilet facility, 1997.....	22
7. Health Infrastructure.....	23
7.1 Potential Health Service Coverage, 1997.....	23
7.2 Distribution Of Health Infrastructure, 1997.....	25
7.3 Distribution of Hospitals by Type and Ownership, 1997	26
7.4 Distribution Of Private Owned Clinics by Type and Region, 1997	26
7.5 Distribution Of Pharmaceutical Retail Outlets, Drugs & Medical Supply By Region, 1997.....	27
7.6 Health Facility Construction, Rehabilitation & Expansion, 1997	28
8. Human Resources	29
8.1 Health Human Resource Distribution By Region & Sex.....	29
8.2 Distribution of Physicians By Specialization & Region	30

IDS	International Disease Surveillance
IUCD	Intra Uterine Contraceptive Device
LB	Live Birth
LE	Life Expectancy
MB	Multibacillary
MCH	Maternal and Child Health
MDG	Millennium Development Goal
MDT	Multiple Drug Therapy
M. Meningitis	Meningococcal Meningitis
NGO	Non Governmental Organization
NER	Net Enrollment Ratio
NNT	Neonatal Tetanus
NSS	National Sentinel Surveillance
Ob.Gyn	Obstetric & Gynecology
OGO	Other Government Organization
OPD	Out-patient Department
OPV	Oral Polio vaccine
PB	Paucibacillary
PF	Plasmodium Falciparum
PFI	Pathfinder International
PHCU	Primary Health Care Unit
PHSC	Potential Health Service Coverage
PHW	Primary Health worker
PM	Plasmodium Malaria
PV	Plasmodium Vivax
R. Fever	Relapsing Fever
RNI	Rate of Natural Increase
SNNPR	Southern Nations & Nationalities Peoples Region
SPM	Strategic Planning & Management
STD	Sexually Transmitted Disease
TB	Tuberculosis
TBA	Traditional Birth Attendant
TFR	Total Fertility Rate
TT	Tetanus Toxoid
USD	US Dollar
WHO	World Health Organization

PREFACE



One of the basic characteristics of the Health Sector Development Programme (HSDP) is its effectiveness in the planning, implementation and monitoring of the health sector activities. The growing need for careful planning, strong implementation and systematic monitoring has given more significance to the availability of adequate and timely information.

Much effort has been put to improve the quality and scope of the data used in this issue. Current and previous years coverage indicators that needed population data have been adjusted based on “The 1994 Population and Housing Census of Ethiopia, Volume II Analytical Report.”

It is hoped that this publication will serve as a useful and quick reference for policy makers and planners as one of the tools for the design of future development plan, monitoring and evaluation. It is also hoped that this publication will meet the needs of researchers and those interested in the health sector.

Among the sources of information used for the preparation of this publication are:

1. Regional Annual Reports
2. Departments of FMOH, Central Specialized Hospitals
3. The 1994(G.C.) Population and Housing Census of Ethiopia, Analytical Report
4. 2005 World Population Data Sheet of the population Reference Bureau
5. Welfare Monitoring Survey: 2004 G.C.
6. Socio-economic & Financial Data: MOFED
7. International Health Related Publications
8. Non-Governmental Organizations

As part of its main activities, the Planning and Programming Department will continue to update the publication annually.

Comments and suggestions are welcome and should be addressed to:

Planning and Programming Department
P.O. Box 1234
Ministry of Health

Acknowledgements are due to all those who participated in providing the information and whose invaluable comments and suggestions have made it possible the completion of this publication on time.

Health Information Processing & Documentation Team

ACRONYMS

ADD	Acute Diarrhea Diseases
AIDS	Acquired Human Immunodeficiency Syndrome
AFP	Acute Flaccid Paralysis
ARI	Acute Respiratory Infection
BCG	Bacille Calmette Guerin
B. Dysentery	Bacillary Dysentery
BS	Both Sexes
BMI	Body Mass Index
CSA	Central Statistical authority
CBR	Crude Birth Rate
CDR	Crude Death Rate
CHA	Community Health Agent
CMR	Child mortality Rate
CPR	Contraceptive Prevalence Rate
CYP	Couple Year Protection
DOTS	Daily Observed Therapy Short Course
DPT	Diphtheria, Pertusis and Tetanus
ENT	Ear, Nose & Throat
EPI	Expanded Programme on Immunization
ETB	Ethiopian Birr
FGAE	Family Guidance association of Ethiopia
FMOH	Federal Ministry of Health
GDP	Gross Domestic Product
GER	Gross Enrollment Ratio
GNI PPP	Gross National Income in purchasing power parity
HC	Health Center
HCU	Health Care Unit
HEW	Health Extension worker
HH	House Hold
HIV	Human Immunodeficiency Virus
HIS	Health Information System
HP	Health Post
HSDP	Health Sector Development Programme
HSEP	Health Service Extension Programme
IMR	Infant Mortality Rate

INTRODUCTION

The land area of Ethiopia is estimated at about 1.1 million square kilometers and the current population is approximately 73 million, of which more than 84 percent live in rural areas. Ethiopia is a Federal Democratic Republic composed of 9 National Regional States Tigray, Afar, Amhara, Oromia, Somalia, Benishangul-Gumuz, Southern Nations, Nationalities and peoples Region (SNNPR), Gambella and Harari, and two Administrative states (Addis Ababa City Administration and Dire Dawa Council).

The National Regional States as well as the two cities administrative councils are further divided in to six hundred eleven woredas and to around 15,000 kebeles (5,000 urban & 10,000 rural).

Health care is one of the crucial components of basic social service that has a direct linkage to the growth and development of a country as well as to the welfare of a society. The health problems largely attributed to preventable infectious ailments and nutritional deficiencies. Infectious and communicable diseases account for about 60-80%. There is a very high-unmet health care need in rural Ethiopia that needs to be addressed through rapid expansion of Primary Health Care (PHC) services.

Health Service Extension Programme (HSEP) is a new initiative included in the Health Sector Development Programme. It is an innovative community based health care delivery system aimed at creating healthy environment as well as healthful living. The main objective of HSEP is to improve access and equity to preventive essential health interventions provided at kebele and household levels with focus on sustained preventive health actions and increased health awareness. It also serves as effective mechanism for shifting health care resources from being dominantly urban to the rural areas where the majority of the country's population resides. Therefore HSEP could be considered as the most important institutional framework for achieving the MDGs.

The third Government Health Sector Development plan (HSDP-III), covering periods 1998-2002 E.C (2005/06-2009/10) fully reflects the commitment to the achievement of the Health MDGs and also constitutes the health chapter of the National Sustainable Development and Poverty Reduction Programme-II. It is based on the various policies and strategies that were developed and endorsed to serve as the vehicles for the achievement of MDGs.

The Federal Ministry of Health has planned to develop HIS strategy and long term plan after taking critical assessment at all levels. In the last three years special emphasis was also given to incorporate the service provided by private health institutions.

It is to be noted that some of the incomplete data from few regions may have underestimated the OPD visit per capita of the country. In this particular publication it stands at 0.31 visit per person per year.

Under 5 Children

Under 5 year children visits to health institution for monitoring of growth and development, screening of risk cases, and for management of disease or mal development.

Vital Events

Births, deaths, marriages and divorces.

GNI PPP per Capita

GNI PPP per capita is Gross National income in purchasing power parity (PPP) divided by midyear population. GNI PPP refers to Gross National income Converted to "international "dollars indicate the amount of goods & services one could buy in the United States with a given amount of money.

Postnatal Visits

Visits made by a mother to a HCU or visited by a health worker (at home) within the first 45 days after giving birth.

Potential Health Service Coverage

The population covered in percentage based on the existing health centers and health stations in catchment's area.

Rate of National Increase

The difference between the births and deaths occurring during a given period divided by the number person-year lived by the population during the same period. This rate, which specifically excludes changes resulting from migration, is equal to the difference between the crude birth rate and the crude death rate.

Rural Drug Vendor

The lowest level of medicinal retail outlet that dispenses medical preparations as approved for this level by the Ministry, but does not engage in compounding preparation or manufacturing of any medical preparation.

Sex Ratio

The number of males in a population or specific sub-population, divided by corresponding number of females, conventionally multiplied by 100.

Special Clinic

Provides specific medical interventions such as medical, surgical, obstetric gyn, ophthalmology, etc. and is assisted by specialists in various disciplines.

Total fertility Rate

The average number of children that would be born per woman of all women lived to end of their childbearing years and born children according to a given set of age specific fertility rates.

Under-five Mortality

The probability of dying between birth and age five per 1000 live births in a given year.
purchasing power parity conversion factor. International dollars indicate the amount of goods & services one could buy in the United States with a

1. SUMMARY OF BASIC HEALTH INDICATORS

Indicator	1993	1994	1995	1996	1997
Total Population	65,344,000	67,220,000	69,127,021	71,066,000	73,043,510
PHS Coverage (%)	59.1	61.0	61.3	64.0	72.1
PHS Coverage (%)*	68.0	70.7	70.2	73.2	82.9
EPI Coverage (%)**	41.9	51.5	50.4	60.8	70.1
Health Service Utilization	0.27	NA	0.29	0.36	0.3
CPR (%)	18.7	17.2	21.5	23.0	25.2
Antenatal Coverage (%)	34.7	34.1	27.4	40.8	42.1
Number of Facilities					
Hospitals	110	115	119	126	131
Health Centers	382	412	451	519	600
Health Stations	2393	2452	2396	1797	1662
Health Posts	1023	1311	1432	2899	4211
Private Clinics	1170	1235	1229	1299	1578
Pharmacies	311	311	302	275	276
Drug Shops	249	309	299	375	381
Rural Drug Vendors	1917	1856	1888	1783	1787
Human Resources (in service)					
Physicians	1366	1888	2032	1996	2453
Health Officers	296	484	631	683	776
Nurses	7723	12838	14160	15544	18809
Health Assistants	7386	8149	6856	6628	6363
Para Medicals	2758	3824	4641	5215	6259
Health Extension workers	-	-	-	-	2737
Human Resources (Graduate)					
Specialists	61	91	103	96	183
General Practitioners	128	152	182	193	309
Health Officers	181	183	181	249	333
Nurses	2164	1562	1465	2374	4536
Para Medicals	917	656	1054	999	803
Health Extension workers	-	-	-	2737	7090

* The Coverage includes the service provided by Private Health Facilities

** Coverage is calculated using DPT3 only.

2. MAJOR HEALTH SECTOR DEVELOPMENT TARGETS & ACHIEVEMENT (1997)

Indicators	HSDP II Target	End of HSDP II
Contraceptive coverage rate	24%	25.2%
ANC coverage	45%	41.5%
EPI coverage	70%	70.1%
Coverage of TT2 to pregnant women	70%	43.3%
Coverage of TT2 to non-pregnant women	32%	25.8%
Post-natal service coverage	20%	13.6%
Proportion of deliveries assisted by trained health workers	25%	12.4%
Share of the annual health budget	8.2%	
Coverage of tuberculosis prevention and control service	75%	34%
Proportion of safe and adequate water supply	42%	35.9%
Proportion of the population with access to excreta disposal facilities	35%	29.9%
Availability of essential drugs and medical supplies in each health facilities	80%
Drugs prescribed in generic name	92%
Per capita expenditures on health	6.0 USD	
HIV prevalence rate	< 7%	4.6%
EPI defaulters	<10%	9.6%
Defaulter rates of TB	0%	4.8%
Defaulter rates of Leprosy	0%	6.7%

Live Birth

The complete expulsion or extraction from its mother of conception, irrespective of the duration of pregnancy, which after such separation shows any evidence of life.

Lower Clinic

Staffed at least by a health assistant or a nurse and serve for general outpatient clinic.

Literacy Rate/ Numeracy Rate

Computed in compliance with UN recommendation as the proportion of the literate population from the domain of individuals aged 10year and above.

Maternal Mortality Rate

A measure of a woman's risk of dying from causes associated with pregnancy.

Medium Clinic

Staffed at least by health officer or general medical practitioner & serve for general medical services.

Morbidity

The extent of illness, injury or disability in a population.

Net Enrollment Ratio

The number of pupils of primary schools age (7-12Years) & in currently attending primary school divided by the total number of children with age group 7-12 year.

Out-Patient

A patient who receive ambulatory care (examination and treatment) with out being admitted or occupying a bed.

Pharmacy

Any store, shop or other place in which medicinal preparation are compounded or prepared and dispensed or sold to the public.

Health Stations

The smallest health units in the conventional Health Service structure and are staffed with 1-3 health assistants.

Higher Clinic

Staffed at least by a general medical practitioner, a specialist and assisted by various specialists serve for general outpatient clinics. For emergency and delivery this clinic has up to 5 beds.

Hospital

An establishment with at least 25 beds that provides general medical care round the clock. It is at least equipped with basic laboratory, X-ray and basic treatment facilities. It is staffed with at least one medical practitioner.

Household

A single person living alone or a group voluntarily living together, having common house keeping arrangements for supplying basic living needs, such as principal meals. The group may consist of related or unrelated persons.

Infant Mortality Rate

The ratio of the number of deaths under one year of age occurring in a given year to the number of births in the same year. Also used in a more rigorous sense to mean the number of deaths that would occur under one year of age in a life table with a radix of 1,000.

Infant Mortality

The probability of dying between birth and age one per 1000 live births in a given year.

In-Patient

A patient who is admitted and occupy bed in a health institution for diagnosis and/or treatment.

Life Expectancy at Birth

The average number of years a newborn infant can expect to live under current mortality levels.

3. DEMOGRAPHY & VITAL STATISTICS

3.1 SOME DEMOGRAPHIC INDICATORS, 1997 E.C. (2004/05)

Regions	Population							Dependancy Ratio %	Pop. Density per km2	Average HH Size*
	Both Sexes	Sex Ratio	Urban %	Under one %	Surviving Infants %	Under Five %	Female 15-49 %			
Tigray	4,223,014	97.1	18.5	3.6	3.0	16.7	23.5	89.8	82.1	4.3
Afar	1,358,718	125.5	8.9	2.8	2.9	14.1	22.4	68.8	-	5.7
Amhara	18,626,047	99.9	11.3	3.2	3.2	16.4	23.4	86.8	111.9	4.5
Oromia	25,817,132	99.6	13.0	3.3	3.7	17.2	23.3	90.1	71.1	4.8
Somali	4,218,297	116.3	16.7	3.3	3.3	15.3	23.1	74.5	-	6.6
Ben.-Gumuz	609,509	101.4	9.4	3.3	3.6	16.2	24.3	82.9	12.1	4.5
SNNP	14,489,705	98.9	8.4	3.3	3.8	17.4	23.8	89.3	125.4	4.7
Gambella	240,394	103.5	18.0	2.9	3.1	14.9	26.8	66.7	9.1	4.5
Hareri	189,550	103.6	62.0	3.1	3.1	14.9	26.5	63.5	594.3	4.3
Addis Ababa	2,887,615	92.5	100.0	2.2	2.1	10.4	34.4	34.1	5291.6	5.1
Dire Dawa	383,529	100.3	74.0	2.9	3.3	15.6	27.3	66.1	305.6	4.7
National	73,043,510	100.5	16.0	3.2	3.5	16.5	23.9	84.1	57.0	4.8

Source: The 1994 G.C. Population and Housing Census of Ethiopia, Analytic Report (CSA)
* Average House Size was indicated for the year 1994 G.C.

3.2 VITAL STATISTICS, 1993-1998 E.C. (2000-2005)

Region	CBR per 1000	CDR per 1000	RNI (%)	* TFR	IMR per 1000	* CMR per 1000	Under 5 MR per 1000	Male LE	Female LE
Tigray	40.4	13.7	2.7	5.8	102	73	148	52	54.9
Afar	33.8	11.6	2.2	4.9	99	114.9	145	56.9	50.8
Amhara	39.5	12.8	2.7	5.9	96	80	138	53.4	56
Oromia	41.6	12.9	2.9	6.4	98	87.9	142	53	55.5
Somalia	36.1	9.8	2.6	5.7	83	94.2	119	58.7	55.4
Ben-Gumuz	40	14.6	2.5	5.4	117	111	173	50.1	51.1
SNNPR	42.6	13.4	2.9	5.9	107	88.2	157	51.4	53.5
Gamgella	34.8	9.1	2.6	4.5	80	126	113	57.6	58.3
Hareri	35.6	12	2.4	4.4	93	82.4	135	55.6	54.7
Addis Ababa	22.7	7.6	1.5	1.9	61	35.4	83	60.3	64.1
Dire Dawa	37	11.7	2.5	3.6	94	78.4	136	54.1	55.8
National	39.9	12.6	2.7	5.9	96.8	84.5	140.1	53.4	55.4

N.B. Maternal Mortality Rate of the Country is estimated to be 871 per 100,000 live births, but figures are not disaggregated by regions.
Source: The 1994 Population and Housing Census of Ethiopia, Analytic Report (CSA)
* Demographic & Health Survey, 2000

Delivery Attended

The service given for a pregnant woman during labor; management of normal delivery and detection of complications, management of risk cases in labor and complicated cases.

Demography

The study of population and its characteristics, with reference to such factors as size, age structure, density, fertility, mortality, growth and social and economic variables.

Discharged Patient

The number of patients who are discharged from the health institution (whether it is dead or alive) after being diagnosed and/or treated.

Drug Shop

Shall mean an establishment which offers for sale to the public. Such medical preparations, cosmetics nursing and sanitary articles, dietetic products and other articles as approved for the purpose by the Ministry but does not engage in the compounding preparation or manufacture of any medical preparation.

Fully Immunized

A child of age under one who has taken all types of antigens completely.

General Fertility Rate

The number of births occurring in a given year per 1000 women in the reproductive ages (i.e. women aged 15-49).

Gross Enrollment Ratio

The total enrollment in a given level of school regardless of age per 100 children of that school age.

Health Center

Establishment which provides both preventive and curative out-patient care. Health Centre is also responsible for training CHAs & TBAs.

Health Post

One of the satellite facility in the Primary Health Care Unit

GLOSSARY

Age Dependency Ratio

The ratio of persons in the “dependent” ages (under 15 and older than 64 years) to those in the “economically productive” ages (15-64 years) in a population.

Antenatal Coverage

A coverage to a health institution made by a pregnant woman to be sure that she has a safe pregnancy.

Average Household Size

The mean number of members per household

Child Mortality

The probability of dying between exact age one and the fifth birth day per 1000 children surviving to the first birth day.

Child Woman Ratio

The number of children under age five per 1,000 women of childbearing age in a given year. This measure is used as a rough fertility indicator, especially when detailed data on births are lacking.

Contraceptive Prevalence Rate

The proportion of eligible women (15-49 years old) who got contraceptive service.

Crude Birth Rate

The number of births in a population during a specified period divided by the number of person-years-lived by the population during the same period. It is frequently expressed as births per 1,000 population.

Crude Death Rate

The number of deaths in a population during a specified period divided by the number of person-years-lived by the population during the same period. It is frequently expressed as births per 1,000 population.

3.3 DEMOGRAPHIC DATA ESTIMATES FOR SOME COUNTRIES & REGIONS OF THE WORLD, 2005 G.C

	Population (Millions)	CBR	CDR	RNI (%)	Projected Population (Millions)		IMR	TFR	% of Population of Age		LE at Birth (Years)			% of Pop. 15-49 With HIV/AIDS		GNI Per Capita 2004 (US\$)
					2025	2050			<15	65+	BS	M	F	2001	2003/04	
World	6,477	21	9	1.2	7,952	9,262	54	2.7	29	7	67	65	69	1.1	1.2	8,540
More Developed	1211	11	10	0.1	1,251	1,249	6	1.6	17	15	76	73	80	0.4	0.5	26,320
Less Developed	5266	24	8	1.5	6,701	8,013	59	3.0	32	5	65	63	67	1.3	1.4	4,450
Less Developed (Excl. China)	3963	27	9	1.8	5,225	6,576	64	3.5	35	5	63	61	64	1.8	1.9	4,100
Africa	906	38	15	2.3	1,349	1,969	88	5.1	42	3	52	51	53	6.3	6.1	2,300
Sub-Saharan Africa	752	41	17	2.4	1,148	1,729	94	5.6	44	3	48	47	49	7.6	7.4	1,830
Northern Africa	194	26	6	2.0	262	324	45	3.3	36	4	68	66	70	0.5	0.5	4,050
West Africa	264	43	18	2.5	404	601	105	5.9	44	3	47	46	48	4.5	4.1	1,200
Eastern Africa	281	41	17	2.5	440	681	90	5.7	44	3	47	46	47	7.7	7.7	1,020
Burundi	7.8	43	15	2.8	13.9	22.9	67	6.8	47	3	49	49	50	6.2	6.0	660
Comoros	0.7	40	10	3.0	1.1	1.8	96	5.4	43	3	60	58	62			1,840
Djibouti	0.8	32	13	1.9	1.1	1.5	100	4.2	41	3	52	51	54	2.8	2.9	2,270
Eritrea	4.7	39	13	2.6	7.2	10.2	50	5.4	45	3	58	56	59	2.8	2.7	1,050
Ethiopia	73	39.9	12.6	2.7	118.4	170.2	96.8	5.9	44	3	48	47	49	4.1	4.4	810
Kenya	33.8	38	15	2.2	49.4	64.8	77	4.9	43	2	47	48	46	8.0	6.7	1,050
Madagascar	17.3	40	12	2.7	28.2	41.8	88	5.2	45	3	55	53	57	1.3	1.7	830
Malawi	12.3	50	19	3.2	23.8	44.4	100	6.5	46	3	45	43	46	14.3	14.2	620
Mauritius	1.2	16	7	0.9	1.4	1.5	14.4	1.9	25	7	72	69	75			11,870
Mayotte	0.2	40	9	3.1	0.3	0.6		5.6	42	2	60	58	62			
Mozambique	19.4	42	20	2.2	27.6	37.6	119	5.5	44	3	42	41	43	12.1	12.2	1,160
Reunion	0.8	20	5	1.4	1	1.1	6	2.5	27	7	75	71	80			
Rwanda	8.7	41	18	2.3	12.9	17.5	107	5.7	44	2	44	42	45	5.1	5.1	1,300
Seychelles	0.1	18	8	1.0	0.1	0.1	16	2.1	26	8	71	66	76			15,590

	Population (Millions)	CDR	CDR	RNI (%)	Projected Population (Millions)		IVR	TFR	% of Population of Age		LE at Birth (Years)			% of Pop. 15-49 With HIV/AIDS		GNI Per Capita 2004 (US\$)
					2025	2050			BS	M	F	2001	2003/ 04			
Somalia	8.6	46	18	2.9	14.9	25.5	120	7.0	45	3	47	46	49			
Tanzania	36.5	42	18	2.4	52.6	71.4	68	5.7	45	3	44	43	45	7.0		660
Uganda	26.9	47	15	3.2	55.8	130.9	88	6.9	51	2	48	48	48	7.1		1,520
Zambia	11.2	41	23	1.9	15.8	21.9	95	5.7	45	3	37	38	37	16.7		890
Zimbabwe	13	31	20	1.1	14.4	15.8	62	3.8	40	3	41	40	41	24.9		2,180
Middle Africa	112	44	16	2.8	189	309	98	6.3	46	3	48	47	50	4.7		1,240
Northern America	329	14	8	0.6	386	457	7	2.0	21	12	78	75	80	0.6	0.6	38,810
Latin America & The Caribbean	559	22	6	1.6	702	805	27	2.6	30	6	72	69	75	0.6	0.7	7,530
Central America	147	25	5	2.0	188	215	27	2.8	33	5	74	71	76	0.5	0.5	8,260
Caribbean	39	20	8	1.1	47	54	41	2.6	29	7	69	67	71	2.1	2.2	
South America	373	21	6	1.5	467	536	26	2.5	30	6	72	69	75	0.5	0.6	7,730
Asia	3,921	20	7	1.3	4,759	5,325	51	2.5	29	6	68	66	69	0.4	0.4	5,350
Asia (excl. China)	2617	24	8	1.6	3,283	3888	57	3.0	33	5	65	64	67	0.5	0.6	5,260
Western Asia	214	27	7	2	303	400	47	3.6	34	5	68	66	70			6,890
South Central Asia	1615	26	8	1.8	2,053	2491	67	3.2	36	4	62	61	63	0.6	0.7	3,040
Southeast Asia	557	22	7	1.5	695	795	39	2.7	30	5	69	66	71	0.5	0.5	4,190
East Asia	1535	12	7	0.5	1,708	1639	25	1.6	21	9	73	71	75	0.1	0.1	7,990
Europe	730	10	11	0.1	716	660	7	1.4	16	16	75	71	79	0.5	0.5	19,980
Northern Europe	96	12	10	0.2	102	105	5	1.7	18	16	78	75	81	0.2	0.2	30,130
Western Europe	186	10	9	0.1	190	183	4	1.6	17	17	79	76	82	0.2	0.2	29,410
Eastern Europe	297	10	14	0.4	272	232	11	1.3	16	14	69	63	74	0.8	0.8	9,720
Southern Europe	151	10	9	0.1	152	141	5	1.3	15	17	79	76	82	0.5	0.5	22,130
Oceania	33	17	7	1	41	46	29	2.1	25	10	75	73	77	0.2	0.2	21,220

Source: 2005 World Population Data sheet of the Population Reference Bureau (PRB) Book Edition
N.B. All year are indicated in G.C.

II.3 POST BASIC AND POST GRADUATES, 1997 E.C (2004/05)

Training Programme	Training Type	Training Institution	Number of Graduates					
			1995		1996		1997	
			BS	F	BS	F	BS	F
Post Graduate Studies	Anesthesiology	Addis Ababa University	1	0				
	Public Health		19	2	28	3	7	3
	Internal Medicine		10	0	13	1	134	17
	Obstetrics & Gyn.		8	0	11	1	14	1
	Ophthalmology		6	0	5	2	4	2
	Orthopedics		3	0	1	0		
	Pathology		1	0	1	0		
	Pediatrics & Child Health		10	0	11	1	2	10
	Surgery		12	0	12	0	16	1
	Radiology		32	4	7	2	6	2
	Pharmaceutics		1	0	7	0		
Total			103	6	96	10	183	36
Post Basic Graduate	Psychiatry Nurse	Amanuel Hospital	22	13	22	14	14	7
	Ophthalmic Nurse	Alert Hospital	0	0	0	0	9	13
	Ophthalmic Nurse	Kuha Nursing school					8	5
	Clinical Nurses	Axum					48	12
	Public Health Nurses						26	7
	Environmental Health						11	1
	Total			22	13	22	14	116

D. Graduates of Health Professionals from Privates Training Schools

No.	Training School		Award	1995		1996		1997	
	Name	Type		BS	F	BS	F	BS	F
1	Selam Nurses College	Nursing	Diploma	54	54	30	30	55	55
2	Salihom Nurses School	Clinical Nurse	Diploma			30	18	25	11
3	KEA-MED Medical college	Clinical Nurse	Diploma					241	150
		Clinical Nurse	Certificate					24	8
4	Sheba Medical College	Clinical Nurse	Diploma					25	11
		Druggist	Diploma					75	31
5	Rift Valley Medical college	Clinical Nurse	Diploma					78	42
6	Medico Bio medical college	Clinical Nurse	Diploma					409	219
		Med. Lab. Technician	Diploma					15	7
		Druggist	Diploma					134	81
7	Central Medical college	Clinical Nurse	Diploma					558	379
		Druggist	Diploma					75	31
8	Universal Medical College	Clinical Nurse	Diploma					156	123
		Druggist	Diploma					94	19
9	Tropical Medical college	Clinical Nurse	Diploma					72	57
		Med. Lab. Technician	Diploma					21	10
		Druggist	Diploma					37	15
10	Para Med college	Clinical Nurse	Diploma					30	10
11	SOS School of Nursing	Clinical Nurse	Diploma					7	5
Total				54	54	60	48	345	224

E. Graduates of Health Extension workers & No. of Schools By Regions

Region	HEW Trainees			Schools Opened		
	1996	1997	Total	1996	1997	Total
Tigray	400	800	1200	2		2
Afar			0			0
Amhara	718	3500	4218	2	5	7
Oromia	740	1296	2036	5	3	8
Somali			0			0
Ben.-Gumuz	30		30	1		1
SNNPR	750	1494	2244	2	2	4
Gambella			0			0
Hareri	49		49	1		1
Dire Dawa	50		50	1		1
National	2737	7090	9827	14	10	24

4. EDUCATION & ECONOMIC STATISTIC

4.1 SCHOOL ENROLLMENT RATIO BY LEVEL OF SCHOOLING & DISTRIBUTION OF LITERACY RATE, 1997 E. C. (2004/05)

A. By Gender & Place of Residence

Place of Residence & Gender	Literacy Rate	Gross Enrollment Ratio			Net Enrollment Ratio						
		Primary Level		Secondary Level	Primary Level		Secondary Level				
		No.	%	No.	%	No.	%				
Country Level											
Male	10,463,017	49.9	4,916,972	80.4	1,343,965	28.3	2,377,677	38.9	787,228	16.6	
Female	5,894,842	26.6	3,940,514	67.6	845,056	17.9	2,142,229	36.8	586,763	12.4	
Total	16,357,859	37.9	8,857,486	74.2	2,189,021	23.1	4,519,906	37.8	1,373,991	14.5	
Rural											
Male	7,746,598	43.4	4,107,200	75.1	813,650	20.2	1,868,975	34.2	426,535	10.6	
Female	3,416,257	18.7	3,040,135	59.5	335,613	8.8	1,596,454	31.2	225,495	5.9	
Total	11,162,855	30.9	7,147,334	67.6	1,149,263	14.7	3,465,429	32.8	652,029	8.3	
Urban											
Male	2,716,419	86.2	809,772	125.4	530,315	73.7	508,702	78.8	360,693	50.1	
Female	2,478,585	64.4	900,379	125	509,443	56.5	545,776	75.8	361,268	40.1	
Total	5,195,004	74.2	1,710,151	125.2	1,039,758	64.2	1,054,477	77.2	721,961	44.5	

B. By level of schooling, Gender and Region, 1997 E.C (2004/05)

Region	Literacy Rate		Gross Enrollment Ratio		Net Enrollment Ratio		Gross Enrollment Ratio		Net Enrollment Ratio	
	Male	Female	Primary Level		Secondary Level		Male GER	Female GER	Male NER	Female NER
			Male GER	Female GER	Male NER	Female NER				
Tigray	55.7	32.9	79.8	84.5	43.1	50.6	35.6	26.7	19.1	16
Afar	42.4	23.4	65.2	44.2	33.1	28.5	29.7	20.3	14.6	14.2
Amhara	40.0	22.7	70	66	33.2	39.3	19	17.2	11.9	12.3
Oromia	49.4	22.8	84	63.7	40.2	34.7	27.5	13.6	15.9	10.1
Somali	37.4	15.2	44.4	30.9	23.9	17.9	20.9	11	11.4	6.9
Ben.Gumuz	49.5	22.5	93	67.3	43.6	31.7	41.5	16.5	23.9	11.7
SNNPR	52.4	24.8	81	63.9	37.5	29.2	29.3	14.2	15.5	8.8
Harari	75.0	78.8	107	80.5	71.1	56.2	51.1	36.2	40	25
Addis Ababa	91.4	74.4	140.8	141.9	85.4	75.9	76	54.6	53.3	38.7
Dire Dawa	73.6	48.4	109.6	100.8	62.7	51.3	57.5	32.1	36.6	23.9
National	49.9	26.6	80.4	67.6	38.9	36.8	28.3	17.9	16.6	12.4

Source: Welfare Monitoring Survey, (WMS) 2004 G.C. (CSA)

C. Graduates of Health Professionals from Public Junior Training Schools

No	Training School		Award	1995		1996		1997	
	Name	Type		BS	F	BS	F	BS	F
1	Awassa	Public Health Nurse	Certificate					2	1
		Lab. technician	Certificate					48	26
2	Arbaminch	Clinical nurse	Certificate					2	1
		Public Health Nurse	Certificate	31	8	113	38		
3	Hosanna	Clinical nurse	Certificate	12	5	137	60		
		Ass Clinical Nurse	Certificate	12	5	137	60	1	
		Mid-wife Nurse	Certificate	18	18	NA	NA		
4	Shashemene	Clinical nurse	Certificate	35	15	31	6	2	1
		Public Health Nurse	Certificate	15	6	NA	NA		
		Mid-wife Nurse	Certificate	32	23	NA	NA		
		Pharmacy Tech.	Certificate	10	4	NA	NA		
5	Mettu	Lab. Technician	Certificate	63	46	NA	NA		
		Clinical nurse	Certificate	24	11	32	23		
6	Goba	Public Health Nurse	Certificate	28	28	NA	NA		
		Clinical nurse	Certificate	63	46	70	49		
		Mid-wife Nurse	Certificate	24	11	NA	NA		
9	Borena	Mid-wife Nurse	Certificate	28	28	NA	NA	7	2
		Clinical nurse	Certificate	53	30	46	24		
10	Dessie	Clinical nurse	Certificate			30	3	135	19
		Ass. Clinical nurse	Certificate					51	10
		Ass.Druggist	Certificate					24	5
		Pharmacy tech.	Certificate	30		NA	NA		
11	Axum	Clinical nurse	Certificate			52	26		
		Public Health Nurse	Certificate			27	4		
		Mid-wife Nurse	Certificate			30	12		
		Lab. tech.	Certificate			27	11		
12	Bahir Dar	Environmental health	Certificate			34	4		
		Clinical nurse	Certificate	30	8				
		Pharmacy tech.	Certificate	24	3			4	
13	Jijiga	Lab. Technician	Certificate	26	8				
		Clinical nurse	Certificate	NA	NA	NA	NA		
		Midwife	Certificate	NA	NA	NA	NA		
14	Debreberhan	Lab. Technician	Certificate	NA	NA	NA	NA		
		Clinical nurse	Certificate	46	37	46	9		
15	Gambella	Ass. Clinical nurse	Certificate					7	2
		Clinical nurse	Certificate	NA	NA	NA	NA		
16	Pawie	Public Health Nurse	Certificate	NA	NA	NA	NA		
		Clinical nurse	Certificate	34	11	NA	NA		
		Public Health Nurse	Certificate	25	4	NA	NA		
17	Hosanna	Mid-wife Nurse	Certificate	22	14	NA	NA		
		Ass.Clinical nurse	Certificate					1	
Total				685	369	812	329	284	67

B. Graduates of Health Professionals form Public Senior Training Schools

No	Training School		Award	1995		1996		1997	
	Name	Type		BS	F	BS	F	BS	F
1	Nekemte	Clinical nurse	Diploma	65	13	163	108	45	12
2	Mekele	Clinical nurse	Diploma	85	54	14	3	116	53
		Pharmacy Tech.	Diploma	19	2				
		Lab. Technician	Diploma					20	7
		Drugist	Diploma					51	13
		Ophthalmic nurse	Diploma	10	4				
3	Axum	Env. Health Tech.	Diploma					19	4
4	Assela	Clinical nurse	Diploma	81	28	92	30	105	38
5	Harar	Clinical nurse	Diploma	71	29	117	42	110	48
		Mid-wife Nurse	Diploma	14	11	57	28	15	13
6	Hossana	Clinical nurse	Diploma					5	3
7	Yirgalem	Clinical nurse	Diploma	32	8	37	8	1	
8	Awassa	Mid-wife nurse	Diploma	27	5	21	11	25	14
		Clinical nurse	Diploma	80	14			159	48
		Public Health Nurse	Diploma					13	3
		Drugist	Diploma					170	51
		Lab. Technician	Diploma	26	4			33	2
9	Menilik II	Clinical nurse	Diploma	49	24			72	33
10	Debretabor	Clinical nurse	Diploma	112	28	62	10	67	9
11	Aira	Drugist	Diploma					12	6
		Clinical nurse	Diploma			32	11		
12	Dessie	Clinical nurse	Diploma			88	12	135	19
13	Debre Berhane	Clinical nurse	Diploma					25	11
14	Bahir Dar	Clinical nurse	Diploma					75	52
15	Goba	Clinical nurse	Diploma					1	1
16	Social Affair	Orthopaedic	Diploma					25	
Total				671	224	683	263	1299	440

Million ETB.

4.2 SOCIO-ECONOMIC DATA, 1997 E.C. (2004/05)

Sr. No.	ECONOMIC INDICATORS	1989 1996/97	1990 1997/98	1991 1998/99	1992 1999/00	1993 2000/01	1994 2001/202	1995 2002/03	1996 2003/04	1997 2004/05
1	Gross Domestic Expenditure	63,325.5	60,596.3	67,690.9	74,593.8	76,025.8	77,342.1	85,322.8	93,859.8	105,570.2
2	Consumption Expenditure	52,599.3	49,400.9	55,691.3	61,497.5	62,239.6	62,578.5	69,821.0	76,032.7	85,247.3
	Government	4,598.3	5,432.1	9,160.8	11,921.9	9,963.8	10,393.4	13,125.4	12,013.1	13,545.3
3	Private	48,001.0	43,968.7	46,530.5	49,572.6	52,275.8	52,185.1	56,695.6	64,019.6	71,702.0
	Gross Domestic Saving	6,500.8	8,179.1	5,863.5	8,721.5	10,504.2	6,735.4	7,413.5	16,776.5	18,906.2
4	Gross Capital Formation	10,726.2	11,195.4	11,999.6	13,096.3	13,786.2	14,763.6	15,501.8	17,827.1	20,322.9
5	GDP at Current Market	56,249.7	53,992.9	58,063.6	64,844.5	66,519.1	62,908.9	68,181.4	83,824.8	95,905.5
6	GDP at Constant Factor Cost	60,261.4	57,600.0	61,516.4	64,844.5	69,961.9	69,958.5	67,916.8	75,682.5	82,365.8
	Growth Rate (%)	3.7	-4.4	6.8	5.4	7.9	0	-2.9	11.4	8.8
7	Health at Constant Factor Cost	423.5	459.6	538.8	571.9	639.1	728.6	734.5	793.2	856.7
	Growth Rate (%)	19.3	8.5	17.2	6.1	11.8	14	0.8	8	8

Source: Ministry of Finance & Economic Development

5. MATERNAL & CHILD HEALTH SERVICES

5.1 IMMUNIZATION COVERAGE BY ANTIGEN, 1997 E.C. (2004/05)

Region	Target Population (Under 1 yr)	BCG		Surviving Infants	DPT3		Measles		Fully Immunized	
		Achieved	Cov.		Achieved	Cov.	Achieved	Cov.	Achieved	Cov.
Tigray	152935	146175	95.6	152935	136269	89.1	127211	83.2	113778	74.4
Afar	37814	NA	NA	39991	NA	NA	NA	NA	NA	NA
Amhara	593516	519791	87.6	653033	490211	75.1	418482	64.1	243694	37.3
Oromia	853791	724076	84.8	949195	598371	63.0	499962	52.7	406181	42.8
Somali	139276	21321	15.3	137144	15728	11.5	18387	13.4	10974	8.0
Ben-Gumuz	19909	11055	55.5	22001	9848	44.8	9444	42.9	5568	25.3
SNNPR	547264	516194	94.3	547264	500345	91.4	456377	83.4	319062	58.3
Gambella	7091	2855	40.3	7340	1641	22.4	1210	16.5	965	13.2
Hareri	6445	6445	100.0	5950	5225	87.8	4031	67.8	3965	66.6
Addis Ababa	62472	45736	73.2	60239	43616	72.4	41689	69.2	39339	65.3
Dire Dawa	11309	8065	71.3	12692	6733	53.1	5849	46.1	3994	31.5
National	2431823	2001713	82.3	2580443	1807987	70.1	1582642	61.3	1147520	44.5

11.2 DISTRIBUTION OF HEALTH TRAINING SCHOOLS

(Type and number of Graduates, 1997 E.C(2004/5))

A. Graduates of Health professionals from public higher education

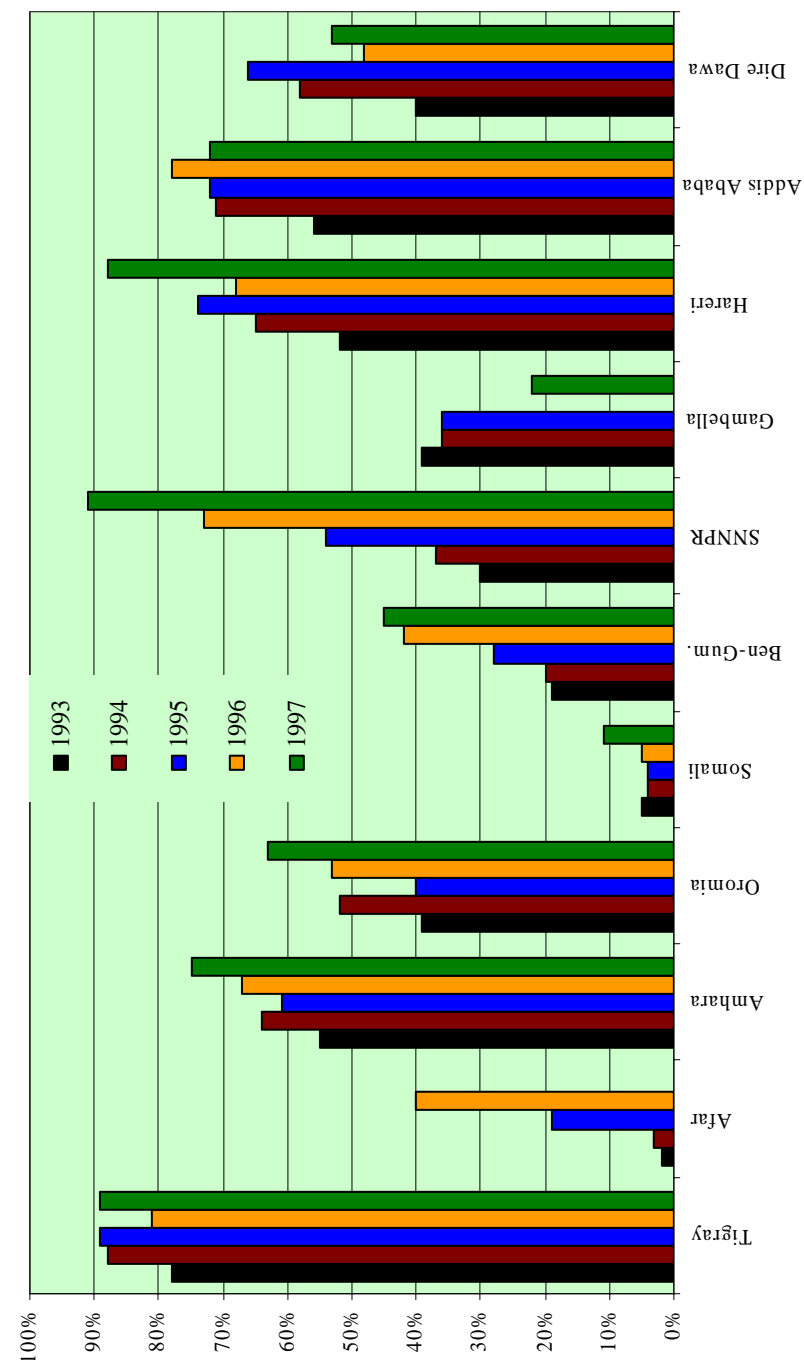
No.	Training School		Award	1995		1996		1997	
	Name	Type		BS	F	BS	F	BS	F
1	Addis Ababa University	Medicine	MD	62	10	72	10		
		Pharmacist	B.Pharm.	50	2	57	11	70	12
		Anaesthesiology	B.Sc.			20	11		
		Lab.Technologist	B.Sc.					6	
		Anaesthesia	B.Sc.					4	1
		Clinical Nurse	Diploma	94	46	161	81	197	126
		Mid wife Nurse	Diploma	33	19	36	26	41	28
		Laboratory Tech	Diploma	70	2	52	26	11	1
		Radiographer technician	Diploma	29	4	26	0	27	
		Druggist	Diploma	70	17	39	15	45	10
2	Gonder University	Medicine	MD	59	7	65	9	143	11
		Public Health Prof.	B.Sc.						
		Post Basic Health officer	B.Sc.	47	9	52	13	60	16
		Clinical Nurse	Diploma	50	24	55	27	103	44
		Public Health Nurse	Diploma	40	12	42	20	43	15
		Midwife Nurse	Diploma	31	12	30	22		
		Lab.technician	Diploma	96	9	106	26	97	10
		Environmental Health	Diploma	49	3	52	5	65	9
		Pharmacy Tech.	Diploma	98	17	118	13		
		Ansth. Nurse	B.Sc.			10	1		
3	Jimma University	Medicine	MD	61	6	56	2	166	10
		Health Science prof.	B.Sc.					2	
		Post Basic Health officer	B.Sc.	51	8	47	6	53	6
		Post Basic Nursing	B.Sc.	33	13	32	10	38	11
		Post Basic Env. Health	B.Sc.	28	0	21	0	24	
		Post Basic Lab-Techn.	B.Sc.	25	1	30	1	31	2
		Clinical Nurse	Diploma	27	17	57	38	151	71
		Public Health Nurse	Diploma	38	22	122	55	53	26
		Druggist	Diploma	79	8	91	3	170	7
		Lab-technician	Diploma	40	4	56	6	58	3
4	Alemaya University	Environmental Health	Diploma	50	5	64	12		
		Health officer	B.Sc.	40	13	43	11	44	9
		Public Health Nurse	Diploma	54	34	63	34	79	37
		Lab-technician	Diploma	56	2	58	2	18	2
5	Dehub University	Druggist	Diploma					113	2
		Environmental Health	Diploma	45	1	52	13	65	13
		Health officer	B.Sc.	43	6	61	9	66	9
		Clinical Nurse	Diploma	49	9	153	13	62	7
		Public Health Nurse	Diploma	41	17	61	42	62	36
6	Defenses Engineering College	Lab.technician	Diploma	40	4	59	2	62	2
		Environmental Health	Diploma	54	4	57	16	62	19
		Health officer	B.Sc.			46	2	48	45
		Radiographer	Diploma					6	1
		Environmental Health	Diploma					32	
		Clinical Nurse	Diploma			152	54	215	65
Total				1732	367	2374	647	3470	666

11. OUTPUT FROM HEALTH PROFESSIONAL TRAINING SCHOOLS

11.1 SUMMARY OF GRADUATES BY CATEGORY, 1997 E.C (2004/05)

Professions	1995		1996		1997	
	BS	F	BS	F	BS	F
Medical Doctor	182	23	289	31	309	21
Health Officer	181	36	249	41	322	85
Pharmacist	50	2	57	11	70	12
Nurse B.Sc.	33	13	62	22	42	12
Senior Clinical Nurse	849	348	1288	514	3300	1702
Junior Clinical Nurse	255	162	444	210	958	111
Senior Public Health Nurse	173	85	288	151	128	248
Junior Public Health Nurse	46	20	140	42	2	1
Senior Mid Wife Nurse	41	16	144	87	40	27
Junior Midwife Nurse	68	60	30	12	3	1
Senior Pharmacy Technician	266	44	248	31	0	0
Junior Pharmacy Technician	89	18	0	0	0	0
Laboratory Technologist	25	1	30	1	6	0
Senior Laboratory Technician	328	25	331	62	337	44
Junior Laboratory Technician	41	14	27	11	48	26
Environmental Health Technologist	28	0	21	0	24	0
Senior Environmental Health Technician	198	13	225	46	243	45
Junior Environmental Health Technician	0	0	34	4	0	0
Senior Radiography Technician	29	4	26	0	33	0
Health Extension Worker	0	0	2737	2737	7090	7090
Total	2882	884	6670	4013	12955	9425

Fig.1 Progress in Immunization Coverage (DPT3)



5.2 DROP-OUT RATES OF ROUTINE EPI ACTIVITY, 1997 E.C. (2004/05)

Regions	BCG-Measles		BCG-DPT3		DPT1-DPT3		DPT1-Measles	
	Total	Rate	Urban	Rate	BS	F	BS	F
Tigray	18,964	13.0	9,906	6.8	NA	NA	NA	NA
Afare	NA	NA	NA	NA	NA	NA	NA	NA
Amhara	101,309	19.5	29,580	5.7	109,911	20.5	116,659	27.9
Oromia	224,114	31.0	125,705	17.4	122,553	16.5	244,583	48.9
Somali	2,934	13.8	5,593	26.2	5,216	21.9	5,480	29.8
Ben-Gumuz	1,611	14.6	1,207	10.9	2,670	19.5	4,252	45.0
SNNPR	59,817	11.6	15,849	3.1	54,261	10.2	77,699	17.0
Gambella	1,645	57.6	1,214	42.5	356	16.6	939	77.6
Hareri	2,414	37.5	1,220	18.9	973	16.3	1,957	48.6
Addis Ababa	4,047	8.9	2,120	4.6	867	2.0	2,738	6.6
Dire Dawa	2,216	27.5	1,332	16.5	952	11.0	2,808	48.0
National	419,071	20.9	193,726	9.7	297,759	15.6	329,904	20.9

10.9 Regional HIV/AIDS ESTIMATED, 1997 E.C. (2004/05)

Region	Adult Prevalence (%)			HIV-pos population		New HIV Infections		New AIDS Cases		Annual AIDS Death			
	Total	Rural	Urban	Male	Female	BS	F	BS	F	BS	F		
	Tigray	4.6	2.8	12.4	4.0	5.2	93,695	51,989	14040	7500	7995	4227	7445
Afar	2.5	1.0	16.4	1.9	3.3	16934	8891	2234	1139	1501	765	1419	724
Amhara	6.5	5.2	15.5	5.6	7.3	578129	319190	92698	49378	45921	23871	41963	21823
Oromia	3.0	1.8	10.3	2.6	3.4	362455	201132	60230	32410	29491	15392	27375	14331
Somali	2.5	1.0	10.2	2.2	2.9	53223	29516	7614	4106	4765	2529	4540	2414
Ben-Gumuz	3.1	2.1	12	2.8	3.5	9536	5291	1381	738	798	420	737	387
SNNPR	2.9	2.3	9.1	2.5	3.3	201765	112086	32728	17552	15970	8314	14520	7552
Gambella	3.9	1.4	14.8	3.4	4.5	4965	2749	683	368	434	230	414	220
Harari	8.1	1.2	11.3	7	9.2	7368	4078	986	534	669	356	660	353
Dire Dawa	8.7	10.9	1.3	7.5	10	16972	9397	2339	1260	1543	821	1502	804
Addis Ababa	14.5		13	13.0	45.9	245925	136398	29451	15996	23590	12799	23603	12900
National	4.6	2.8	12.5	3.9	5.2	1,590,967	880,717	244,384	130,981	132,677	69,724	124,178	65,446

C. Annual Inpatient cases report by region compiled from monthly reportable diseases

Region	Tig.	Afar		Amh.		Orom.		Som.		Gan.		Ben.		SNNPR		DD		Har.		A/A		National		
		Cases	D	Cases	D	Cases	D	Cases	D	Cases	D	Case	D	Cases	D	Case	D	Cases	D	Cases	D	Cases	D	
Onchocerciasis	1	0	2	0	77	19	30	0	0	0	0	0	91	0	0	0	0	0	0	2	1	202	20	
Typhoid Fever	7	2	11	0	271	6	918	55	3	0	80	1	1076	28	29	0	11	0	80	4	244	1	2,730	97
Relapsing Fever	38	0	2	0	302	4	863	24	0	0	1	0	835	18	0	0	8	0	0	0	411	7	2,460	53
Epidemic Typhus	2	0	0	0	14	0	38	1	0	0	1	0	42	3	1	0	0	0	1	0	54	0	153	4
Rabies	7	0	0	0	2	1	18	6	0	0	0	0	10	7	0	0	0	0	0	0	0	0	37	14
New AIDs case	191	42	106	17	389	95	579	54	1	0	53	19	529	59	23	6	167	20	155	22	1064	165	3,257	499
Diarrhea with Blood	170	4	72	2	395	18	446	16	30	0	15	0	472	10	102	1	90	2	223	14	208	3	2,223	70
Diarrhea with severe dehydration (<5 years)	2954	89	130	16	3687	156	6937	196	401	4	811	6	5600	272	330	11	354	25	589	37	4036	72	25,829	884
Malaria	3943	109	1378	34	12027	700	7036	315	701	44	3428	90	16625	649	1805	63	328	35	402	13	147	11	47,820	2063
Diarrhea with some dehydration (<5years)	1098	39	101	7	1384	21	2279	35	432	12	347	4	1392	43	243	8	311	9	321	14	1123	13	9,031	205
Malaria in pregnancy	110	4	40	3	235	24	153	4	31	2	106	3	290		46	0	1	0	8	0	11	8	1,031	56
Severe Anemia	245	19	417	12	726	52	785	59	91	7	252	6	1435	134	98	5	57	0	46	2	32	10	4,184	306

5.3 TT2+ ACHIEVEMENT & COVERAGE BY REGION, 1997 E.C (2004/05)

Regions	TT2+ Achievement & Coverage					
	Pregnant Women			Non-pregnant		
	Target pop.	Achieved	%	Target pop.	Achieved	%
Tigray	170,610	114,764	67.3	819,873	26,932	3.3
Afar	45,925	NA	NA	258,055	NA	NA
Amhara	735,729	320,625	43.6	3,628,784	1,444,309	39.8
Oromia	1,073,993	379,977	35.4	4,946,321	1,158,673	23.4
Somali	152,281	11,848	7.8	821,704	8,721	1.1
Ben.-Gumuz	24,380	6,406	26.3	124,012	24,603	19.8
SNNP	617,261	378,727	61.4	2,731,589	1,008,642	36.9
Gambella	8,366	2,722	32.5	54,489	1,557	2.9
Hareri	6,748	3,794	56.2	42,190	8,415	19.9
Addis Ababa	65,549	35,588	54.3	929,093	48,368	5.2
Dire Dawa	14,191	5,127	36.1	87,171	4,914	5.6
National	2,906,070	1,259,578	43.3	14,489,587	3,735,134	25.8

Fig.2.1 TT2+ Coverage for Pregnant Women

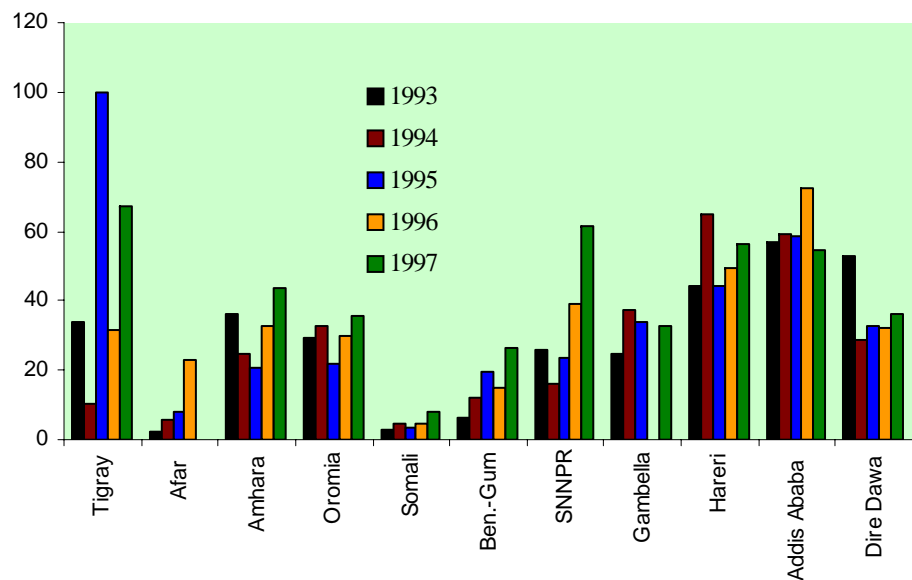
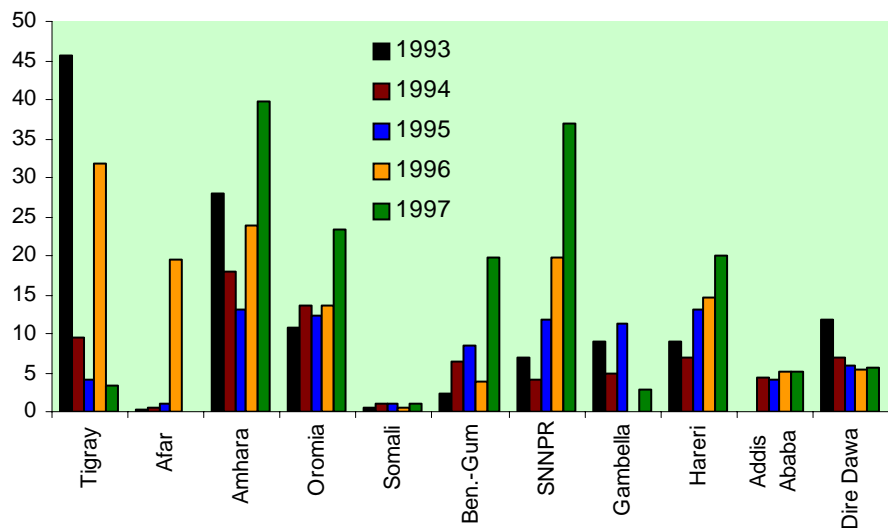


Fig. 2.2 TT2+ Coverage for Non-Pregnant Women



B. Annual Outpatient cases report by region compiled from monthly reportable diseases

Region	Tig	Afar	Amh	Orom	Som	Ben	SNNP	Gam	Har	DD	A/A	National
Onchocerciasis	19	0	366	2339	10	416	250	125	0	0	60	3585
Typhoid Fever	454	262	6744	20054	123	1789	21184	313	16	196	14668	65803
Relapsing Fever	103	104	846	1597	10	1	1504	10	11	0	1320	5506
Epidemic Typhus	10	2	248	451	26	0	314	2	0	0	6787	7840
Rabies	406	0	85	947	0	88	245	2	0	0	158	1931
New AIDS case	1605	513	2268	3767	68	179	2456	110	99	450	10190	21705
Male Urethral Discharged	2173	1401	4706	5200	430	430	2627	304	40	288	3775	21374
Genital Ulcer	1231	228	3713	3723	397	390	2357	172	20	106	2577	14914
Diarrhea with Blood	8668	1547	21492	16749	935	2332	13513	2446	729	1465	8928	78804
Malaria	56767	63266	377060	190429	9362	115798	352759	40855	5666	5869	3148	1220979
Lab. confirmed cases	19591	38510	125023	71502	2354	15560	123165	5928	2281	689	2163	406766
Pneumonia (<5year)	19247	975	53720	80618	3325	7934	53859	5000	1752	2832	41421	270683
Diarrhea with sever dehydration (<5years)	8046	1124	21027	38224	1680	2919	25732	2150	998	1065	10639	113604
Malaria in pregnancy	449	1194	6119	2091	486	2326	4166	659	24	3	18	17535

10.8 NATIONAL SURVEILLANCE SYSTEM & EPIDEMIC REPORT

10.8.1. ANNUAL REPORT OF EPIDEMIC DISEASE, 1997 E.C. (2004/05)

Region	Meningitis		Malaria		Relapsing F.		W.Cough		Pertussis		Dysentery/shigesi	
	Cases	D	Cases	D	Cases	D	Cases	D	Cases	D	Cases	D
Tigray	44	2	46990	21	0	0	0	0	0	0	160	0
Afar	0	0	0	0	0	0	0	0	0	0	0	0
Amhara	48	13	101401	164	0	0	183	1	0	0	0	0
Oromia	333	6	6146	35	50	3	160	0	0	0	236	0
Somali	0	0	182	NA	0	0	0	0	0	0	0	0
Ben-Gumuz	163		2276	29	0	0	0	0	113	1	0	0
SNNPR	93	6	16414	1	0	0	0	0	0	0	33	0
Gambella	16	1	0	0	0	0	0	0	0	0	0	0
Dire-Dawa	0	0	0	0	0	0	0	0	0	0	0	0
Harari	0	0	0	0	0	0	0	0	0	0	0	0
Addis Ababa	4	0	0	0	0	0	0	0	0	0	0	0
National	701	28	173409	250	50	3	343	1	113	1	429	0

10.8.2 IDS REPORT, 1997 E.C.(2004/05)

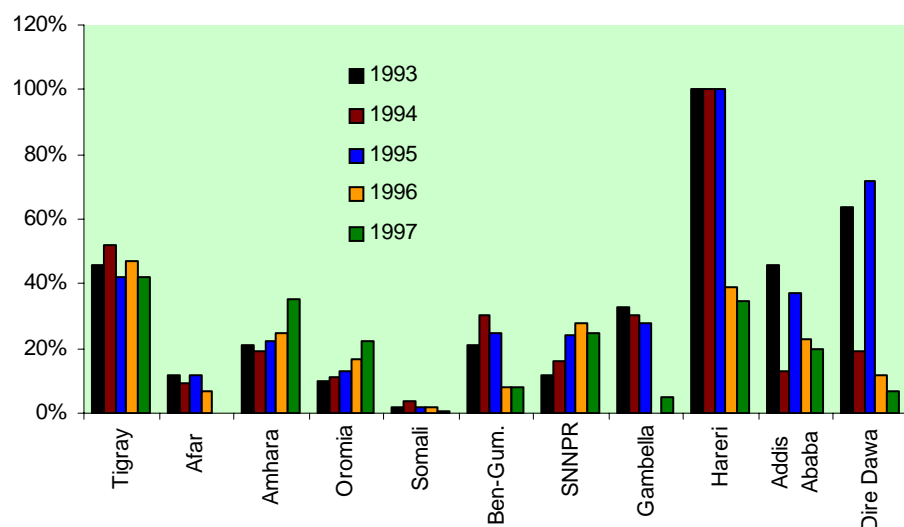
A. Annual report by region compiled from weekly reportable diseases

Region	Cholera		Plague		Yellow Fever		M.Meningitis		Measles		AFP		NNT		Dracunculiasis	
	Case	D	Case	D	Case	D	Case	D	Case	D	Case	D	Case	D	Case	D
Tigray	0	0	0	0	0	0	49	0	96	0	89	0	0	0	0	0
Afar	0	0	0	0	0	0	14	0	84	0	21	0	2	0	0	0
Amhara	0	0	0	0	0	0	168	0	242	0	175	0	3	0	0	0
Oromia	0	0	0	0	0	0	734	0	232	0	218	0	33	0	0	0
Somali	0	0	0	0	0	0	1	0	82	0	20	0	0	0	0	0
Ben-Gumuz	0	0	0	0	0	0	31	0	63	0	8	0	0	0	0	0
SNNP	0	0	0	0	0	0	414	0	159	0	149	0	25	0	0	0
Gambella	0	0	0	0	0	0	16	0	271	0	3	0	0	0	13	
Hareri	0	0	0	0	0	0	64	0	35	0	2	0	3	0	0	0
Dire Dawa	0	0	0	0	0	0	6	0	26	0	3	0	0	0	0	0
Addis Ababa	0	0	0	0	0	0	119	0	145	0	30	0	2		0	0
National	10	0	0	0	0	0	1616	0	1435	0	718	0	68	0	13	0

5.4 MATERNAL HEALTH SERVICES ACHIEVEMENT & COVERAGE BY REGION, 1997 E.C. (2004/05)

Region	Expected Delivery/Pregnancy	Antenatal		Attended Delivery		Postnatal Service		Non-Pregnant Women	Family Planning	
		Achieved	Cov.	Achieved	Cov.	Achieved	Cov.		Acceptors	Cov.
Tigray	170,610	66,249	38.8	58,711	34.4	63,902	37.5	819,873	344,494	42.0
Afar	45,925	NA	NA	NA	NA	NA	NA	258,055	NA	NA
Amhara	735,729	308,151	41.9	90,246	12.3	99,684	13.6	3,628,784	1,287,550	35.5
Oromia	1,073,993	385,876	35.9	60,270	5.6	88,895	8.3	4,946,321	1,096,855	22.2
Somali	152,281	5,717	3.8	3,973	2.6	836	1.0	821,704	3,904	0.5
Ben-Gumuz	24,380	9,652	39.6	2,756	11.3	739	3.0	124,012	9,893	8.0
SNNPR	617,261	375,730	60.9	113,084	18.3	117,767	19.1	2,731,589	681,979	25.0
Gambella	8,366	1,655	19.8	1,029	12.3	404	4.8	54,489	2855	5.2
Hareri	6,748	3,874	57.4	1,603	23.8	1,267	18.8	42,190	14,652	34.7
Addis Ababa	65,549	54,689	83.4	24,013	36.6	19,673	30.0	929,093	183063	19.7
Dire Dawa	14,191	7,329	51.7	3,749	26.4	251	1.8	87,171	6,002	6.9
National	2,897,705	1,218,922	42.1	359,434	12.4	393,418	13.6	14,435,099	3,631,247	25.2

Fig. 3 Progress in Contraceptive Prevalence Rate (CPR)



5.5 NUTRITIONAL STATUS AND CHILD CARE

5.5.1 PREVALENCE OF WASTING, STUNTING & UNDERWEIGHT, 1997 E.C (2004/05)

Region	Prevalence of wasting%		Prevalence of Stunting %		Prevalence of Underweight %	
	Rural	Urban	Rural	Urban	Rural	Urban
Tigray	12.8	8.2	47.9	26.5	42.5	27.3
Afar	16.3	16.1	38.3	31.4	40.7	32.1
Amhara	8.0	6.5	59.1	44.1	46.3	29.7
Oromia	8.7	6.2	43.5	27.6	34.8	16.9
Somali	13.6	10.6	38.9	32.6	35.8	27.9
Ben.Gumuz	9.9	5.3	41.8	34.3	41.1	23.9
SNNPR	7.1	5.9	48.2	29.0	37.1	22.3
Harari	7.6	3.5	33.7	19.7	28.4	15.9
Dire Dawa	10.2	6.4	30.6	20.9	30.9	17.1
Addis Ababa	7.9	5.3	40.9	22.2	32.0	12.2
National	8.4	6.5	48.5	29.5	38.7	20.8

Source: Welfare Monitoring Survey, 2004 G.C (CSA)

10.7.6 LEPROSY RESULTS OF TREATMENT, 1997 E.C (2004/05)

Region	No. of Patients Registered		Treatment Completed		Died		Default		Transfer out	
	PB	MB	PB	MB	PB	MB	PB	MB	PB	MB
Tigray	17	224	94.1	83.0	0	0.5	0.0	5.4	0	8.1
Afar	6	9	83.3	83.3	33.3	22.2	116.7	111.1	0	0.0
Amhara	271	1547	83.8	79.8	2.0	0.6	2.2	6.8	2.2	0.9
Oromia	178	2107	83.7	87.0	2.0	1.3	5.6	7.6	1.7	1.1
Somali	1	36	83.7	200.0	0.0	2.9	0.0	8.3	1.1	0.0
Ben-Gumuz	54	397	116.7	82.1	0.0	7.2	16.7	11.9	0.0	1.2
SNNPR	6	84	85.2	87.0	0.0	1.7	14.8	10.3	0.0	1.8
Gambella	46	182	47.8	65.9	2.2	5.0	10.9	122.5	17.4	11.0
Hareri	1	43	100.0	69.8	0.0	0.0	300.0	16.3	0.0	2.3
Addis Ababa	14	124	50.0	63.7	0.0	0.0	0.0	5.6	0.0	4.8
Dire Dawa	0	15	0.0	80.0	0.0	6.7	0.0	6.7	0.0	2.3
National	594	4,768	81.3	81.6	1.4	1.3	6.7	12.1	2.9	1.9

Region	Total Cases			New Cases			Relapses	Defaulter	Others
	All	PB %	MB %	All	PB %	MB %			
Tigray	159	6.9	93.1	137	7.3	92.7	12	9	1
Afar	103	39.8	60.2	99	40.4	59.6	1	3	0
Amhara	1739	13.8	86.2	1581	14.4	85.6	94	20	44
Oromia	2207	8.7	91.3	2034	8.9	91.1	89	56	28
Somali	27	11.1	88.9	24	12.5	87.5	0	0	3
SNNP	506	9.1	90.9	434	9.7	90.3	22	33	17
Ben-Gumuz	61	16.4	83.6	55	18.2	81.8	3	3	0
Gambella	223	7.6	92.4	174	9.2	90.8	6	40	3
Harrari	47	0.0	100.0	37	0.0	100.0	2	4	4
Addis Ababa	178	14.0	86.0	99	10.1	89.9	28	12	38
Dire Dawa	27	3.7	96.3	24	4.2	95.8	3	0	0
Total	5,277	11.1	88.9	4,698	11.6	88.6	260	180	138

5.5.2 PREVALENCE OF WASTING, STUNTING & UNDER WEIGHT BY GENDER, 1997 E.C (2004/05)

	Wasting			Stunting			Underweight		
	M	F	BS	M	F	BS	M	F	BS
National									
1996	7.8	6.9	7.3	67.6	63.8	65.7	47.8	42.9	45.4
1998	10.7	8.4	9.6	55.9	53.5	54.7	46.5	43.2	44.9
2000	10.2	8.9	9.6	58.1	55.3	56.7	45.9	44.1	45.0
2004	8.6	7.9	8.3	48.3	45.5	46.9	37.6	36.7	37.1
Rural									
1996	8.0	7.2	7.6	68.4	64.8	66.6	49.3	44.0	46.7
1998	10.8	8.6	9.7	57.4	55.0	56.2	47.9	44.7	46.3
2000	10.4	9.2	9.8	59.4	56.3	57.9	47.6	45.6	46.7
2004	8.8	8.1	8.4	49.9	47.1	48.5	39.1	38.3	38.7
Urban									
1996	6.4	4.1	5.3	61.0	55.5	58.4	35.1	33.6	34.4
1998	9.8	7.2	8.5	42.1	38.9	40.5	32.8	28.7	30.7
2000	7.0	5.8	6.4	44.2	44.7	44.4	26.7	27.4	27.0
2004	6.9	6.0	6.5	31.1	27.9	29.6	21.5	20.0	20.8

Source: Welfare Monitoring Survey, 2004 G.C (CSA)

5.6 AMOUNT OF CONTRACEPTIVE DISTRIBUTED BY TYPE
CONTRACEPTIVE METHOD, 1997 E.C.(2004/05)

5.6.1 DISTRIBUTION OF CONTRACEPTIVES BY FMOH & NGOs

Contraceptives by Type	Unit	MOH	DKT	PFI	FGAE	Total	CYP	%CYP
Microgynon	Cycle	3578040	500000	0	235598	4313638	331,818	11.9
Nordette	Cycle	0	0	0	5827	5827	448	0.0
LO-FEMENAL	Cycle	0	0	3169591	365230	3534821	271,909	9.8
Positioner 2.5	Cycle	0	0	274	0	274	21	0.0
Duofem (Low Fem)	Cycle	0	2419445	0	0	2419445	604,861	21.8
EXCLUTON	Cycle	0	0	0	8655	8655	666	0.0
Cu-T 380	Each	0	0	0	2042	2042		
Foam Tablet	Each	0	0	2460	96	2556	17	0.0
Female Condom	Each	0	0	0	602	602	4	0.0
Male Condom	Each	9921600	47690043	9371526	1848693	68831862	458,879	16.5
Norplant	Each	10500	0	19986	1141	31627	109,059	3.9
Jadelle	Each	26500	0	0	659	27159		
Copper T	Each	2830	0	0	0	2830		
Injectables		0	0	939739	0	939739	234935	8.4
Depo Provera	Vial	106000	1718100	0	270116	2094216	523554	18.8
Norestrat		0	0	0	518	518	86	0.0
Megestron	Vial	962600	0	0	0	962600	240650	8.7
IUCD		0	0	1128	0	1128	3890	0.1
Total							2,780,797	100.0

5.6.2 DISTRIBUTION OF CONTRACEPTIVES BY FMOH TO THE REGION

Region	Microgynon (Cycle)	Jadelle (Each)	Depo-Provera (Vial)	Megestron (Vial)	Male Condoms	Copper T (Each)	Norplant (Each)
Tigray	320760	320	0	143800	1627200	0	300
Afar	47520	600	3000	13200	93600	0	3000
Amhara	1161000	1260	28000	343800	2217600	825	900
Oromia	1100520	3440	30000	159400	3312000	1050	900
Somali	9720	0	0	9000	86400	0	0
Ben-Gumuz	7560	1000	0	5400	288000	0	0
SNNPR	584280	2000	25000	150600	597600	0	1500
Gambella	19440	40	0	6800	691200	0	0
Harari	8640	0	0	29800	0	0	0
Dire Dawa	7560	0	0	13200	100800	0	0
Addis Ababa	268920	40	18000	72400	554400	955	2100
Others	42120	17800	2000	15200	352800	0	1800
National	3578040	26500	106000	962600	9921600	2830	10500

10.7.4 NUMBER OF HEALTH FACILITIES PROVIDING DOTS & MDT, 1997 E.C. (2004/05)

Regions	DOTS & MDT						DOTS only				MDT only							
	HO	HC	HS	HP	TOT	% Facility	HO	HC	HS	HP	TOT	% Facility	HO	HC	HS	HP	TOT	% Facility
Tigray	12	34	168	46	260	57.0	0	0	0	0	0	0.0	0	0	0	0	0	0.0
Afar	2	14	44	9	69	60.0	0	0	0	0	0	0.0	0	0	0	0	0	0.0
Amhara	16	118	0	1025	1159	72.2	0	0	0	0	0	0.0	0	0	0	0	0	0.0
Oromia	29	166	755	389	1339	68.9	0	0	0	0	0	0.0	0	0	0	0	0	0.0
Somali	2	2	11	0	15	6.9	3	4	5	0	12	5.5	0	0	0	0	0	0.0
Ben-Gumuz	2	12	52	25	91	67.9	0	0	0	0	0	0.0	0	0	0	0	0	0.0
SNNP	15	128	228	127	498	28.5	0	0	0	0	0	0.0	0	0	0	6	6	0.0
Gambella	1	8	10	11	30	45.5	0	0	0	0	0	0.0	0	0	0	0	0	0.0
Hareri	3	2	10	8	23	69.7	0	0	0	0	0	0.0	0	0	0	0	0	0.0
Addis Ababa	13	25	7	0	45	19.7	0	0	0	0	0	0.0	0	0	0	0	0	0.0
Dire Dawa	1	5	0	1	7	14.3	0	0	0	0	0	0.0	0	0	0	0	0	0.0
National	96	514	1285	1,641	3,536	53.6	3	4	5	0	12	0.2	0	0	0	6	6	0.0

10.7.2 TUBERCULOSIS TREATMENT RESULTS, 1997 E.C. (2004/05)

Patients on Short Course Chemotherapy

Regions	No. of Patients	Cured	Completed	% Success Rate	% Died	% Fail	% Default	% Transferred
Tigray	2,019	1661	96	87.0	11.2	1.3	2.5	5.6
Afar	1624	390	927	81.1	2.5	3.9	7.3	5.0
Amhara	7,417	4846	830	76.5	7.4	0.6	3.6	8.1
Oromia	13,506	8952	2280	83.2	6.1	0.3	5.7	3.3
Somali	1,168	900	11	78.0	5.8	0.9	5.6	6.2
Ben-Gumuz	172	139	14	89.0	8.7	0.0	1.2	1.2
SNNP	9,312	6172	1617	83.6	4.5	0.5	5.0	4.5
Gambella	313	98	106	65.2	11.2	0.0	8.3	4.8
Hareri	261	186	10	75.1	8.8	1.2	3.8	11.1
Addis Ababa	3,931	2632	491	79.1	7.5	1.1	4.5	5.4
Dire Dawa	718	484	29	71.1	7.7	2.2	4.5	13.9
Total	40,441	26,460	6411	81.3	6.3	0.8	4.8	5.2
Standard				>=85			<10	

10.7.3 CASE DETECTION RATE OF PTB+ BY REGIONS, 1997 E.C (2004/05)

Region	Population	Estimated incidence of PTB+	New PTB+ Cases Detected	Case Detection Rate
Tigray	4,223,014	6,546	1,926	29.4
Afar	1,258,718	2,106	1,261	59.9
Amhara	18,626,047	28,870	6,979	24.2
Oromia	25,817,132	40,017	13,318	33.3
Somali	4,218,297	6,538	1,112	17.0
Ben-Gumuz	6095,509	945	350	37.0
SNNPR	14,489,705	22,459	8,283	36.9
Gambella	240,394	373	443	118.9
Hareri	189,550	294	302	102.8
Addis Ababa	288,615	4,476	4,084	91.2
Dire Dawa	383529	594	467	78.6
National	73,043,510	113,217	38,525	34.0
Standard				>= 70

5.7 PERCENTAGE OF CONTRACEPTIVE USERS BY TYPE OF CONTRACEPTIVE METHOD 1995-1997 E.C.

Region	Pills			Depo Provera			Norplant			IUD			Condoms			Others		
	1995	1996	1997	1995	1996	1997	1995	1996	1997	1995	1996	1997	1995	1996	1997	1995	1996	1997
Tigray	34.3	53.2	41.6	43.4	26.8	34.1	0.0	0.1	0.1	0.0	0.0	0.0	22.2	19.9	23.6	0.1	0.04	0.5
Afar	20.1	23.5	NA	39.0	44.6	NA	0.0	0.0	NA	0.0	0.0	NA	41	31.9	NA	0.0	0.0	NA
Amhara	NA	NA	NA	NA	NA	NA	NA	NA	NA	NA	NA	NA	NA	NA	NA	NA	NA	NA
Oromia	4.6	45.9	49.3	4.4	44.1	37.3	0.0	0.2	0.4	0.0	0.0	0.0	1.6	9.1	11.5	0.0	0.57	1.0
Somali	69.9	45.2	40.4	16	22.0	29.5	0.0	0.0	NA	0.0	0.0	0.0	14.0	35.8	30.1	0.0	0.0	NA
Ben-Gumuz	30.5	NA	31.9	65.0	NA	63.0	0.0	0.0	NA	0.0	NA	0.0	4.5	NA	5.0	0.0	NA	0.1
SNNPR	51.3	NA	43.9	33.9	NA	41.3	0.1	0.1	0.3	0.3	0.3	0.0	13.3	NA	14.0	1.1	NA	0.1
Gambella	51.3	NA	34.9	33.6	NA	38.4	0.0	0.0	NA	0.0	NA	0.0	15.1	NA	26.8	0.0	NA	NA
Hareri	18.5	35.1	17.9	20.4	61.9	32.0	0.1	0.0	0.1	24.5	0.01	0.0	36.4	2.9	49.7	0.0	0.0	NA
Addis Ababa	41.1	35.0	47.9	43.8	50.0	41.6	0.6	0.6	0.6	0.7	0.0	0.0	13.7	4.1	8.7	0.1	0.94	0.0
Dire Dawa	45.7	19.3	10.0	31.0	72.5	22.2	0.2	0.0	0.1	0.2	0.01	0.0	22.9	8.2	2.0	0.0	0.0	NA
National	31.0	27.1	31.6	33.0	21.1	27.5	0.2	0.1	0.2	1.9	0.0	0.0	16.2	51.3	10.5	0.1	0.2	0.3

6. HYGIENE & ENVIRONMENTAL HEALTH SERVICES 6.1

PERCENTAGE DISTRIBUTION OF HOUSEHOLDS BY SOURCE OF DRINKING WATER, 1997 E.C (2004/05)

	Safe water			
	1996	1998	2000	2004
National	19.1	23.7	27.9	35.9
Rural	9.6	13.7	17.1	25.2
Urban	72.1	83.5	91.7	92.4

6.2 ACCESS TO SAFE WATER AND TYPE OF TOILET FACILITY 1997 E.C (2004/05)

Region	safe water (%)	Flush Toilet (%)	Pit Latrine (%)	Field/Forest (%)
Tigray	54.0	80.7	13.9	5.0
Afar	48.6	78.2	18.3	2.8
Amhara	28.0	87.0	11.2	1.3
Oromia	32.0	74.8	23.3	1.6
Somali	39.0	73.6	24.4	1.6
Ben.Gumuz	27.2	65.9	32.9	1.0
SNNPR	34.3	42.4	54.8	2.4
Harari	73.3	42.9	49.6	6.4
Addis Ababa	99.0	7.0	74.3	16.9
Dire Dawa	90.8	31.5	64.5	3.6

6.3 DISTRIBUTION OF HOUSEHOLDS BY TYPE OF TOILET FACILITY, 1997 E.C (2004/05)

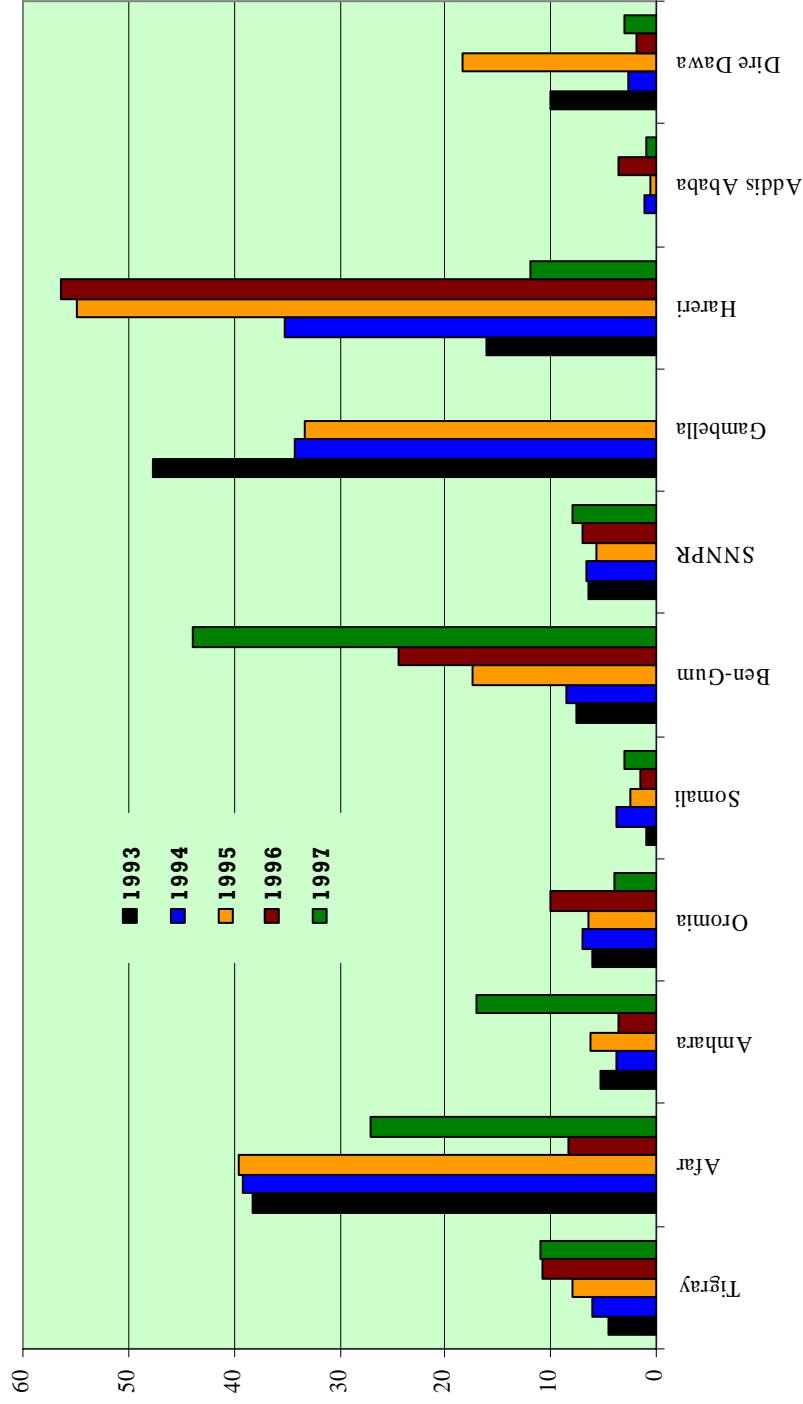
Type of Toilet	Rural	Urban
Flush	1.8	1.3
Pit Latrine	20.0	71.4
Container	0.2	0.3
Fields/Forest	78.2	19.2
Others	0.2	0.3
Waste disposal facility		
Waste Disposal Vehicles/ container	0.2	29.0
Dug-out	4.3	16.8
Throw-away	32.1	31.1
Burning the waste	2.3	13.8
Used as Manure	60.6	6.4

Source: Welfare Monitoring Survey, 2004 G.C

10.7. TUBERCULOSIS AND LEPROSY 10.7.1 TUBERCULOSIS CASE FINDINGS, 1997 E.C. (2004/05)

Regions	Pulmonary Smear Positive				Pulmonary Smear Negative	Extra-Pulmonary	All New Cases		Total Notified Cases
	New	Relapse	Failure	Defaulter			Cases	%	
Tigray	1,926	193	17	20	3,025	34.4	3,848	43.7	9,029
Afar	1,261	27	36	149	2,403	52.4	918	3.4	4,794
Amhara	6,979	438	51	59	8,832	32.3	11,500	42.1	27,859
Oromia	13,318	558	71	142	13,026	31.4	15,155	612.1	42,270
Somali	1,112	83	6	9	648	26.2	716	28.9	2,574
Ben-Gumuz	350	10	7	3	237	23.4	427	2.4	1,034
SNNP	8,283	263	31	80	4,888	27.3	4,755	26.5	18,300
Gambella	443	36	9	18	182	18.5	358	62.8	1,046
Harari	302	12	4	3	146	25.6	122	21.4	589
Addis Ababa	4,084	552	77	70	5,313	36.2	5,266	240.1	15,362
Dire Dawa	467	74	4	7	1,116	50.9	610	27.8	2,278
Total	38,525	2,246	313	560	39,816	32	43,675	35	125,135
									98
									122,016

Fig.7 Reported Laboratory Confirmed Malaria Cases per 1000 Population



7. HEALTH INFRASTRUCTURE

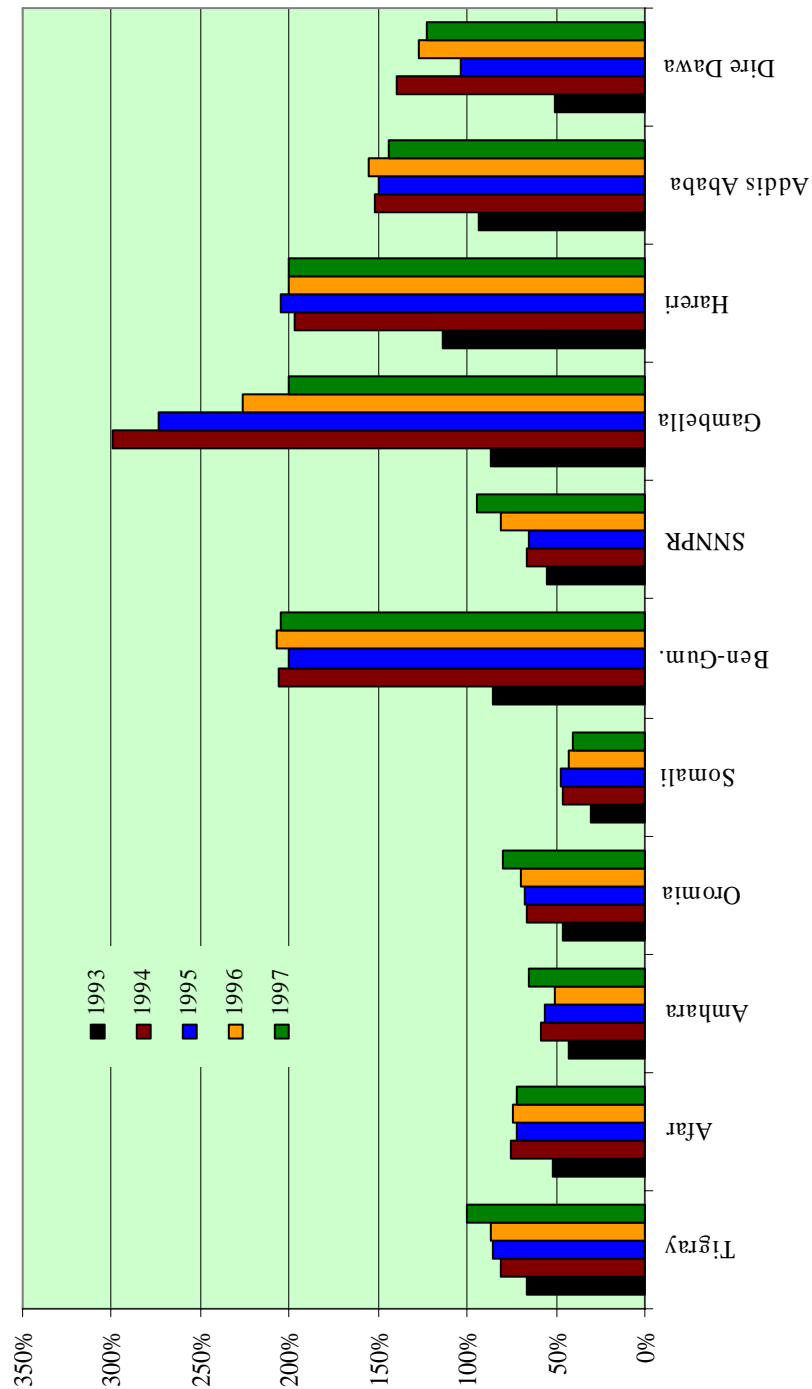
7.1 POTENTIAL HEALTH SERVICE COVERAGE, 1997 E.C. (2004/05)

Region	Population	Health Center (HC)	Health Station (HS)	Health Post (HP)	Private Clinics (PC)	Potential Health Service Coverage (%)		
						HC, HS	HC, HS, HP	HC, HS, HS, HP, PC
Tigray	4,223,014	48	182	211	31	71.5	96.5	100.2
Afar	1,358,718	9	45	59	3	49.7	71.4	72.5
Amhara	18,626,047	126	40	1421	304	19.1	57.2	65.4
Oromia	25,817,132	185	817	912	672	49.6	67.2	80.2
Somali	4,218,297	16	75	121	2	27.3	41.6	41.8
Ben.-Gumuz	609,509	11	56	65	19	137.0	190.3	205.9
SNNPR	14,489,705	161	256	1316	116	45.5	90.9	94.9
Gambella	240,394	8	35	22	7	139.0	185.0	200.0
Hareri	189,550	2	19	7	21	126.6	145.1	200.5
Addis Ababa	2,887,615	29	130	43	382	70.1	77.6	143.7
Dire Dawa	383,529	5	7	34	21	50.8	95.2	122.6
National	73,043,510	600	1,662	4,211	1,578	43.3	72.1	82.9

Note: Health Centers, Health Stations, Health Posts & private Clinics are included in the calculation which are considered to serve a Population of 25,000, 10,000, 5,000, and 5,000, respectively.

Number of Health Facilities for Afar is taken from 1996 report.

Fig. 4 Progress in Potential Health Service Coverage



Cont...

Year	Region	Exam	Positive	P.f	P.v	P.m	Mixed
1995	Tigray	103773	31,855	21,485	9,794		586
	Afar	93600	51,575	33,235	18,340		
	Amhara*		109,224				
	Oromia	308702	156,274	76,553	57,616	73	182
	Somali	20015	10,041	9,871	165		5
	Ben-Gumuz		10,064	4,804	5,229	2	30
	SNNPR	173128	78,923	43,391	35,491	41	28
	Gambella	23608	7,598	6,585	960	45	2
	Harari	33230	9,764	8,543	1,045		176
	Addis Ababa*		1,779				
	Dire Dawa*		6,526				
Total		756,056	473,623	204,467	128,640	161	1,009
		%	62.6	43.2	27.2	0.0	0.2
1996	Tigray	132,821	44,536	31,638	12,075	-	823
	Afar	22,601	11,115	7,765	3,350	-	-
	Amhara	148,510	64,629	43,369	17,870	105	3,285
	Oromia*	554,210	250,408	181,366	63,966	508	4,568
	Somali	12,691	6,219	4,927	1,215	-	77
	Ben-Gumuz	67,975	14,524	9,850	4,668	6	-
	SNNPR	174,841	98,605	68,222	29,333	87	963
	Gambella	96,296	53,725	29,944	23,547	141	93
	Harari	-	10,438	8,809	1,629	-	-
	Addis Ababa	923	727	265	462	-	-
	Dire Dawa	NA	10,161	NA	NA	NA	NA
Total		1,210,868	565,087	386,155	158,115	847	9,809
		%	46.7	68.3	28.0	0.2	1.7
1997	Tigray	149,615	50,145	41,009	8,366	-	526
	Afar *	65,421	37,100	24,587	12,513	-	-
	Amhara	397,252	319,646	50,564	20,734	-	-
	Oromia*	335,799	105,849	64,071	36,806	8	4,964
	Somali	16,044	12,558	7,896	4,662	-	-
	Ben-Gumuz	82,226	26,894	11,534	15,329	-	30
	SNNPR*	277,037	114,013	74,713	34,638	1,777	2,855
	Gambella	129,061	126,383	112,183	12,829	1,195	176
	Harari	6,023	2,281	2,060	221	-	-
	Addis Ababa	2,522	2,092	891	1,201	-	-
	Dire Dawa	13,704	1,058	806	243	-	9
Total		1,474,704	798,019	390,314	147,542	2,980	8,560
		%	54.1	48.9	18.5	0.4	1.1

* Incomplete data

7.3 DISTRIBUTION OF HOSPITALS BY TYPE AND OWNERSHIP, 1997 E.C. (2004/05)

Region	Hospitals						
	MOH			OGA	NGO	Private	Total
	Specialized Hospital	Zonal Hospital	District Hospital				
Tigray	0	5	7	2	0	1	15
Afar	0	1	1	0	0	0	2
Amhara	2	4	10	2	0	0	18
Oromia	0	12	9	5	4	0	30
Somali	0	3	3	0	0	0	6
Ben-Gumuz	0	1	1	0	0	0	2
SNNPR	0	6	6	1	4	0	17
Gambella	0	0	1	0	0	0	1
Hareri	0	2	1	2	0	0	5
Addis Ababa	0	5	0	3	2	17	27
Diredawa	0	0	1	1	0	1	3
Central	4			1			5
National	6	39	40	17	10	19	131

7.4 DISTRIBUTION OF PRIVATE OWNED CLINICS BY TYPE AND REGION, 1997 E.C (2004/05)

Region	Types of Clinics				
	Lower	Medium	Higher	Special	Total
Tigray	0	24	3	4	31
Afar	3	0	0	0	3
Amhara	215	76	11	2	304
Oromia	564	92	13	3	672
Somali	1	1	0	0	2
Ben-Gumuz	16	3	0	0	19
SNNP	80	24	10	2	116
Gambella	6	1	0	0	7
Hareri	6	14	1	0	21
Addis Ababa	109	103	90	80	382
Dire Dawa	4	7	4	6	21
National	1004	345	132	97	1578

* Data for Afar Region is taken from 1996 Report

10.5.3 TOP 10 LEADING CAUSE OF DEATH, 1997 E.C (2004/05)

Rank	Diagnosis	Cases	%
1	All type of malar	2399	28.91
2	Bronchopneumonia	1039	12.52
3	Tuberculosis	850	10.24
4	All other infective and parasitic diseases	242	2.92
5	Malignant neoplasm of stomach	122	1.47
6	Tetanus	108	1.30
7	Lobar pneumonia	96	1.16
8	Hypertension without mention of heart	83	1.00
9	Dysentery	63	0.76
10	Pyrexia of Unknown origin(Fever)	53	0.64
Total of 10 Leading causes		5055	60.92
Total of all diseases		8298	100.00

Data not available for Afar, Oromia and Dire Dawa region

Top 10 leading causes of Death for Female

Rank	Diagnosis	Cases	%
1	All type of malar	1339	28.51
2	Bronchopneumonia	486	10.35
3	Tuberculosis	455	9.69
4	All other diseases of genito urinary system	149	3.17
5	Gastro enteritis and colitis	113	2.41
6	All other infective and parasitic diseases	106	2.26
7	Other complication of pregnancy childbirth and (puerperium)	50	1.06
8	Hypertension without mention of heart	50	1.06
9	Tetanus	39	0.83
10	Lobar pneumonia	20	0.43
Total of 10 Leading causes		2807	59.76
Total of all diseases		4697	100.00

Data not available for Afar, Oromia, Amhara and Dire Dawa region

Top 10 leading causes of Death for Infant

Rank	Diagnosis	Cases	%
1	All Type of Malaria	608	28.10
2	Bronchopneumonia	521	24.08
3	Gastro enteritis and colitis	178	8.23
4	Tuberculosis	126	5.82
5	Dysentery	49	2.26
6	Other infections of newborn	34	1.57
7	Kwashiorkor	24	1.11
8	Pyrexia of Unknown origin(Fever)	21	0.97
9	Tetanus	16	0.74
10	Pernicious Anaemia	12	0.55
Total of 10 Leading causes		1589	73.43
Total of all diseases		2164	100.00

Data not available for Afar, Oromia, Amhara and Dire Dawa region

10.5.2. TOP 10 LEADING CAUSE OF ADMISSION, 1997 E.C (2004/05)

Top 10 leading causes of Admission

Rank	Diagnosis	Cases	%
1	All Type of Malaria	37839	14.98
2	Deliveries without mention of complication	16571	6.56
3	Bronchopneumonia	12369	4.90
4	Tuberculosis	8532	3.38
5	Other complication of pregnancy childbirth and (Puerprrium)	6114	2.42
6	Accident	4289	1.70
7	Abortion without mention of sepsis or toxemia	2979	1.18
8	Gastro-enteritis and colitis	2872	1.14
9	Cataract	2842	1.13
10	Infections of skin and subcutaneous tissue	2603	1.03
Total of 10 leading causes		97010	38.40
Total of all diseases		252605	100

Data not available for Afar, Oromia, Gambella and Dire Dawa region

Top 10 leading causes of Admission for Female

Rank	Diagnosis	Cases	%
1	Deliveries without mention of complication	16571	20.83
2	All Type of Malaria	15231	19.14
3	Other complication of pregnancy, childbirth and (puerperium)	6114	7.68
4	Bronchopneumonia	3689	4.64
5	Tuberculosis	3452	4.34
6	Abortion without mention of sepsis or toxemia	2979	3.74
7	All other diseases of Genito-Urinary system	2064	2.59
8	Infections of skin and subcutaneous tissue	1471	1.85
9	Gastro-enteritis and colitis	1237	1.55
10	Abortion with sepsis	1000	1.26
Total of 10 leading causes		53808	67.63
Total of all diseases		79568	100

Data not available for Afar, Oromia, Amhara, Gambella and Dire Dawa region

Top 10 leading causes of Admission for infant

Rank	Diagnosis	Cases	%
1	All Type of Malaria	4655	17.79
2	Lobar pneumonia	2185	8.35
3	Gastro-enteritis and colitis	1222	4.67
4	Pyrexia of unknown origin (Fever)	1116	4.27
5	Bronchopneumonia	1030	3.94
6	Tuberculosis	515	1.97
7	Dysentery	501	1.91
8	Acute upper respiratory infections	360	1.38
9	Malnutrition	304	1.16
10	Chronic other and unspecified Nephritis	288	1.10
Total of 10 leading causes		12176	46.53
Total of all diseases		26166	100

Data not available for Afar, Oromia, Amhara, Gambella and Dire Dawa region

7.5 DISTRIBUTION OF PHARMACEUTICAL RETAIL OUTLETS, DRUGS & MEDICAL SUPPLY BY REGION, 1997 E.C. (2004/05)

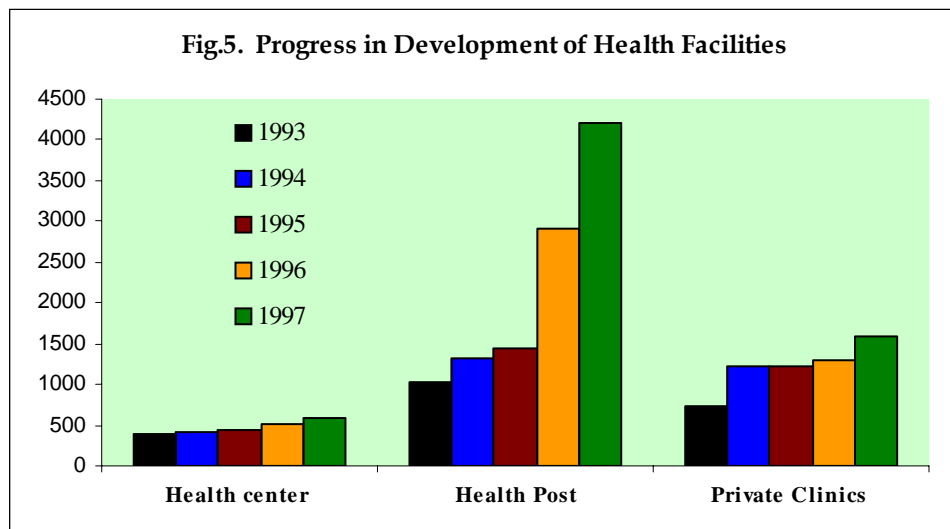
Region	Pharmacies	Drug Shops	Rural Drug Vendors	Drugs & Medical Supply		
				Importer & Distributor	Producer	Total
Tigray	14	69	192	3	1	4
Afar	1	4	45	0	0	0
Amhara	38	53	223	10	0	10
Oromia	63	164	787	14	2	16
Somali	0	2	61	0	0	0
Ben-Gumuz	2	17	34	0	0	0
SNNPR	24	41	417	5	0	5
Gambella	0	4	13	0	0	0
Hareri	4	12	3	0	0	0
Addis Ababa	120	96	7	64	8	72
Dire Dawa	10	11	5	4	0	4
National	276	473	1787	100	11	111

* Data for Afar Region is taken from 1996 Report

7.6 HEALTH FACILITY CONSTRUCTION, REHABILITATION & EXPANSION, 1997 E.C (2004/05)

Description	Activities						
	Construction		Rehabilitated	Expanded	Upgraded	Equipped	Furnished
	New	Ongoing					
Specialized Hospital	0	0	0	0	0	0	0
Zonal Hospital	0	0	2	3	0	1	1
District Hospital	0	4	1	2	0	1	1
Health Centers	10	51	0	2	0	12	86
Health Stations	0	0	2	5	24	0	2
Health Post	2629	119	24	0	0	63	138
Training School	0	1	1	5	0	0	6
Drug Store	0	1	0	0	0	0	0
Regional laboratory	0	0	0	0	0	0	0
Regional Health Bureaus	0	0	0	0	0	0	0
Zonal Health Department	0	3	0	0	0	0	0
Wereda Health Office	0	0	0	0	0	0	0
Medical Equipment Workshop Construction	0	0	0	0	0	0	0
VCT Center	1	0	0	0	0	0	1

* No data from Afar Region



10.5. TOP 10 LEADING CAUSES, 1997 E.C. (2004/05)

10.5.1 TOP 10 LEADING CAUSE OF OUTPATIENT VISIT

Top 10 leading causes of outpatient visit

Rank	Diagnosis	Cases	%
1	All Type of Malaria	1,591,040	16.57
2	Helminths	667,536	6.95
3	Tuberculosis	428,420	4.46
4	Bronchopneumonia	417,034	4.34
5	Gastritis and Duodenitis	375,217	3.91
6	Acute upper respiratory infections	371,496	3.87
7	Inflammatory diseases of eye (except Trachoma)	260,381	2.71
8	Infections of skin and subcutaneous tissue	228,124	2.38
9	All other Respiratory diseases	216,841	2.26
10	Diarrhoea	212,809	2.22
Total of 10 leading causes		4,768,898	49.68
Total of all diseases		9,599,286	100.00

Data not available for Afar and Dire Dawa region

Top 10 leading causes of outpatient visit for Female

Rank	Diagnosis	Cases	%
1	All Type of Malaria	402,954	15.21
2	Bronchopneumonia	224,090	8.46
3	Tuberculosis	221,685	8.37
4	Helminths	155,474	5.87
5	Acute upper respiratory infections	141,123	5.33
6	Gastritis and Duodenitis	129,152	4.88
7	All other diseases of Genito-Urinary system	86,317	3.26
8	Infections of skin and subcutaneous tissue	79,575	3.00
9	Inflammatory diseases of eye (except Trachoma)	61,727	2.33
10	All other infective and parasitic diseases	61,288	2.31
Total of 10 leading causes		1,563,385	59.03
Total of all diseases		2,648,453	100.00

Data not available for Afar, Amhara and Dire Dawa region

Top 10 leading causes of outpatient visit for infant

Rank	Diagnosis	Cases	%
1	All Type of Malaria	162,711	19.03
2	Primary atypical other and unspecified pneumonia	110,034	12.87
3	Acute upper respiratory infections	75,841	8.87
4	Helminths	55,970	6.55
5	Gastro-enteritis and colitis	55,164	6.45
6	Tuberculosis	53,929	6.31
7	Infections of skin and subcutaneous tissue	32,510	3.80
8	Dysentery	32,503	3.80
9	Inflammatory diseases of eye(except trachoma)	28,569	3.34
10	Hypertrophy of tonsils and adenoids	28,368	3.32
Total of 10 leading causes		635,599	74.33
Total of all diseases		855,155	100

Data not available for Afar, Oromia, Amhara and Dire Dawa region

10.4 MAJOR & MINOR SURGERY PERFORMED BY REGION, 1997E.C.(2004/05)

Regions	Hospital		Health Center		Total	
	Major	Minor	Major	Minor	Major	Minor
Tigray	6,488	10,434	-	18	6,488	10,452
Afar	NA	NA	-	NA	NA	NA
Amhara	NA	NA	-	NA	NA	NA
Oromia	7,094	23,709	-	NA	7,094	23,709
Somali	313	401	-	-	313	401
Ben-Gumuz	135	384	-	-	135	384
SNNPR	NA	NA	-	NA	NA	NA
Gambella	NA	1,270	-	NA	NA	1,270
Hareri	1,598	950	-	-	1,598	950
Dire Dawa	850	723	-	42	850	765
Addis Ababa	12,555	12,584	-	-	12,555	12,584
Total	29,033	50,455	-	60	29,033	50,515

8. HUMAN RESOURCES

8.1 HEALTH HUMAN RESOURCE DISTRIBUTION BY REGION AND SEX, 1997 E.C.(2004/05)

Profession	Tig	Afar	Amh	Orom	Som	Ben	SNNP	Gam	Har	A/A	DD	Cent	NGO	OGO	Private@	Total
Health Extension workers	400	0	718	740	0	30	750	0	49	0	50	0	0	0	0	2737
Physicians	77	17	131	186	55	14	106	6	41	167	30	247	578	354	444	2453
Female	7	NA	15	NA		0	7		6	38	3	39	71	10	48	10.8
Health Officers	108	11	115	149	15	12	118	15	4	2	6	13	42	134	32	776
Female	31	NA	12	NA	2	1	12	0		2	1	3	4	5	3	15.4
Pharmacists	4	5	1	22	5	2	8	0	1	5	3	14	31	69	21	191
Female	2	NA	0	0	0	0	0	0	0	1	0	1	5	5	5	19.0
Nurses	1414	230	2004	3389	385	277	2336	248	214	610	190	713	912	5403	484	18809
Female	880	NA	763	NA	100	50	690	50	96	401	108	524	586	145	396	47.8
Env. Health W.	100	15	332	383	23	18	258	11	11	4	15	11	19	105	7	1312
Female	29	NA	59	NA	4	0	35	2		2	2	3	2	2	0	16.5
Lab. Tech.	154	26	259	502	57	26	336	12	20	96	29	80	355	586	299	2837
Female	67	NA	32	NA	5	4	48	1	5	36	6	31	71	17	59	21.8
Radiographer	17	2	36	47	4	5	22	0	8	36	4	34	51	146	39	451
Female	15	NA	7	NA		0	0	0	1	17	0	7	9	2	6	21.5
Pharm. Tech.	232	5	174	283	18	14	189	0	12	36	12	29	62	322	40	1428
Female	64	NA	39	NA	3	1	27	0	3	14	0	8	15	2	15	23.2
Health Ass.	879	58	879	1789	112	43	549	32	29	252	34	142	704	417	444	6363
Female	553	NA	244	NA	15	0	111	3	17	190	18	99	195	94	115	39.8
*FLHW	2867	218	1033	424	458	104	983	0	42	0	0	1	42	5028	0	11200
Female	287	NA	375	NA	175	62	325	0	31	0	0	0	31	1	0	22.4
Total	5892	587	4964	7174	1132	515	4905	324	382	1208	323	1284	2796	12564	1810	45860
Female	2335	NA	2264	NA	304	118	2005	54	210	699	188	715	989	281	647	41.4

* FLHW Includes CHA, TBA & PHW

@ Data available only for Addis Ababa, Benchangul-Gumuz, Dire Dawa & Harari region

8.2 DISTRIBUTION OF PHYSICIANS BY SPECIALIZATION AND REGION, 1997(2004/05)

Region	Tig	Afar	Amh	Orom	Som	Ben	SNNP	Gam	Har	A/A	DD	Cent	NGO	OGO	Private	Total %F
Total	77	17	131	186	55	14	106	6	41	167	30	247	578	354	444	10.7
Specialists	27	0	29	43	13	5	23	0	14	73	13	164	270	178	215	22.8
Internist	3	0	3	2	1	0	1	0	2	11	0	36	49	32	41	3.3
Surgeon	6	0	6	10	2	0	6	0	4	15	2	29	29	31	24	1.8
Pediatrician	4	0	1	6	2	0	2	0	1	9	2	14	29	21	29	17.5
Gynaecologist	3	0	6	13	1	0	5	0	3	13	4	16	44	17	38	8
Ophthalmologist	2	0	3	3	1	0	3	0	1	9	1	7	21	8	15	20.3
Orthopedist	0	0	3	0	0	0	0	0	0	2	1	6	2	10	2	3.8
ENT Specialist	0	0	0	1	0	0	0	0	0	4	0	3	4	6	2	0.0
Anaesthesiologist	0	0	3	2	0	0	0	0	1	2	1	6	5	7	4	3.2
Dentist	0	0	2	0	1	0	0	0	0	0	0	1	54	6	37	22.8
Radiologist	1	0	2	3	1	0	1	0	1	6	0	9	14	9	11	15.5
Physiotherapist	0	0	0	0	0	0	0	0	0	0	0	6	2	4	0	33.3
Neurologist	0	0	0	0	0	0	0	0	0	1	0	0	0	3	0	0.0
Public Health	7	0	0	3	4	5	5	0	1	0	2	9	7	7	2	7.7
Dermatologist	0	0	0	0	0	0	0	0	0	0	0	13	7	6	7	18.2
Psychiatrist	0	0	0	0	0	0	0	0	0	0	0	4	1	3	1	0.0
Pathologist	1	0	0	0	0	0	0	0	0	1	0	5	2	8	2	5.3
GP	50	17	102	143	42	9	83	6	27	94	17	83	308	176	229	9.9

10.3 DIAGNOSTIC SERVICES, 1997E.C.(2004/05)

Regions	New OPD Visit	% Diagnostics Service to New OPD Visit						
		Blood	Urine	Stool	Sputum	X-ray	Sonography	
Tigray	1,775,022	12.24	4.34	10.0	0.3	1.24	NA	
Afar	NA	NA	NA	NA	NA	NA	NA	
Amhara	4,158,304	NA	NA	NA	NA	NA	NA	
Oromia	2,653,509	NA	NA	NA	NA	1.23	NA	
Somali	269,427	2.31	1.66	1.7	0.1	1.43	NA	
Ben-Gumuz	221,003	11.14	1.35	8.7	0.5	0.14	NA	
SNNPR	2,128,181	NA	NA	NA	NA	NA	NA	
Gambella	55,746	10.11	1.51	3.2	2.3	1.37	NA	
Hareri	100,863	48.92	41.59	18.5	13.0	12.21	0.9	
Diredawa	129,534	NA	5.67	6.7	1.7	6.18	NA	
Addis Ababa	977,617	16.30	24.01	14.6	5.2	5.63	1.9	
Central	274,735	23.45	21.25	17.0	7.1	24.75	3.3	
National	12,743,941	14.34	4.24	4.2	0.9	1.59	0.3	

10.2 NUMBER OF BEDS, DAYS SPENT IN HOSPITAL, DISCHARGES & DEATHS, 1997 E.C. (2004/05)

Regions	Hospitals & Health Centers									
	No. of Beds	Total Length of stay in Days	Bed Occupancy Rate	Total Discharged		Discharged Dead				
				Both Sexes	Female	Both Sexes	Female			
Tigray	1451	284473	53.7	40639	20925	1662	645			
Afar	190	NA	NA	NA	NA	NA	NA			
Amhara	1936	507402	71.8	72486	NA	NA	NA			
Oromia	2311	796380	94.4	796380	NA	NA	NA			
Somali	636	16828	7.2	2404	1294	118	47			
Beni-Gumuz	262	60125	62.9	60125	2312	187	68			
SNNPR	3267	414645	34.8	59235	NA	0	NA			
Gambella	96	14175	40.5	2025	1192	362	173			
Hareri	497	77231	42.6	11033	5960	677	289			
Addis Ababa	2674	156898	16.1	22414	16195	883	391			
Diredawa	415	79240	52.3	11320	NA	672	273			
Central	1772	372959	70.2	24536	13022	887	521			
Total	15,507	2,688,103	47.5	1,102,597	60,900	5,448	2,407			

8.3 DISTRIBUTION OF NURSES BY SPECIALTY, REGION AND SEX, 1997 E.C. (2004/05)

Region	Nurse B. Sc.		Mid-Wife Nurse		Psychiatry Nurse		Anaesthist Nurse		Dental Nurse		Clinical & Staff Nurse		Public Health N.		Other Nurses *		Total	
	BS	F	BS	F	BS	F	BS	F	BS	F	BS	F	BS	F	BS	F	BS	F
	Tigray	2	1	139	130	5	2	9	7	6	2	1240	731	7	2	6	5	1414
Afar	0	0	31	11	2	1	2	0	0	0	187	50	7	2	1	0	230	64
Amhara	4	2	312	196	6	2	10	5	1	1478	479	181	72	12	7	2004	763	
Oromia	7	NA	329	NA	29	NA	22	NA	8	NA	2526	NA	459	NA	9	NA	3389	NA
Somali	0	0	42	37	1	0	4	0	0	0	319	62	14		5	1	385	100
Ben.-Gumuz	0	0	31	14	2	0	2	0	2	1	171	22	69	13	0	0	277	50
SNNPR	11	4	244	106	15	6	5		3	2	1744	475	303	90	11	7	2336	690
Gambella	0	0	24	7	0		1	0	0	0	198	41	20	2	5	0	248	50
Hareri	3	0	22	9	2	1	4	1	1		155	73	8	3	19	9	214	96
Addis Ababa	0	0	98	91	1	0	35	16	3	3	452	276	3	2	18	13	610	401
Dire Dawa	4	1	23	5	2	0	4	1	0	0	121	66	23	11	11	7	188	91
Central	7	3	17	16	34	19	30	19	0	0	387	282	82	63	156	122	713	524
NGO	8	2	98	83	3	1	23	7	22	3	707	1190	8	3	45	27	914	1316
OGO	48	8	44	5	24	4	115	5	25	2	4665	77	58	8	424	36	5403	145
Private**	2	2	55	53	0		18	5	4	3	398	291	0	0	7	4	484	358
National/ (%F)	96	24.0	1509	50.6	126	28.6	284	23.2	75	21.3	14748	27.9	1242	21.8	729	32.6	18809	29.4

* include Tutor, MCH, Ophthalmic, OR & Pediatric Nurses

** Data is available only for Addis Ababa, Benshangul-Gumuz, Dire Dawa & Harari region

8.4 HEALTH PROFESSIONALS POPULATION RATIO BY REGION, 1997 E.C (2004/05)

Region	Population	Physician		Physician & Health Officer		Senior Nurse		Senior & Junior Nurse		Environmental Health Worker		Health Extension workers	
		No.	Ratio	No.	Ratio	No.	Ratio	No.	Ratio	No.	Ratio	No.	Ratio
Tigray	4,223,014	77	54,844	185	22,827	825	5,119	1,414	2,987	100	42,230	400	10,558
Afar	1,358,718	17	79,925	28	48,526	230	5,907	230	5,907	15	90,581	0	0
Amhara	18,626,047	131	142,184	246	75,716	1,137	16,382	2,004	9,294	332	56,103	718	25,942
Oromia	25,817,132	186	138,802	335	77,066	2,056	12,557	3,389	7,618	383	67,408	740	34,888
Somali	4,218,297	55	76,696	70	60,261	167	25,259	385	10,957	23	183,404	0	0
Ben-Gumuz	609,509	14	43,536	26	23,443	95	6,416	277	2,200	18	33,862	30	20,317
SNNPR	14,489,705	106	136,695	224	64,686	1,547	9,366	2,336	6,203	258	56,162	750	19,320
Gambella	240,394	6	40,066	21	11,447	105	2,289	248	969	11	21,854	0	0
Hareri	189,550	41	4,623	45	4,212	182	1,041	214	886	11	17,232	49	3,868
Addis Ababa	2,887,615	167	17,291	171	16,887	575	5,022	610	4,734	4	721,904	0	0
Dire Dawa	383,529	30	12,784	36	10,654	157	2,443	190	2,019	15	25,569	50	7,671
National	73,043,510	2,453	29,777	3229	22,621	10,517	6,945	18,809	3,883	1,312	55,673	2,737	26,687
WHO Standard			1:10,000				1:5,000						

10. DISEASE STATISTICS

10.1 OUTPATIENT VISIT & ADMISSION DATA, 1997 E.C. (2004/05)

Regions	Population	Out Patient			Total Admission	% Admission of New OPD visit
		New	Repeat Visit	visit per Capita		
Tigray	4,223,014	1,775,022	1,558,978	0.8	40,639	2.3
Afar	1,358,718	NA	NA	NA	NA	NA
Amhara	18,626,047	4,158,304	3,448,685	0.4	72,486	1.7
Oromia	25,817,132	2,653,509	2,288,719	0.2	796,380	30.0
Somali	4,218,297	269,427	80,981	0.1	2,404	0.9
Ben-Gumuz	609,509	221,003	60,125	0.5	60,125	27.2
SNNPR	14,489,705	2,128,181	917,390	0.2	59,235	2.8
Gambella	240,394	55,746	67,873	0.5	2,025	3.6
Hareri	189,550	100,863	30,217	0.7	11,033	5.8
Addis Ababa	2,887,615	897,294	443,959	0.5	22,414	2.5
Diredawa	383,529	129,534	20,709	0.4	11,320	0.1
Central		274,735	258,383		24,536	8.9
Total	73,043,510	12,663,618	9,176,019	0.3	1,102,597	8.7

9.5 CAPITAL BUDGET ALLOCATION & EXPENDITURE, 1988-1997 E.C

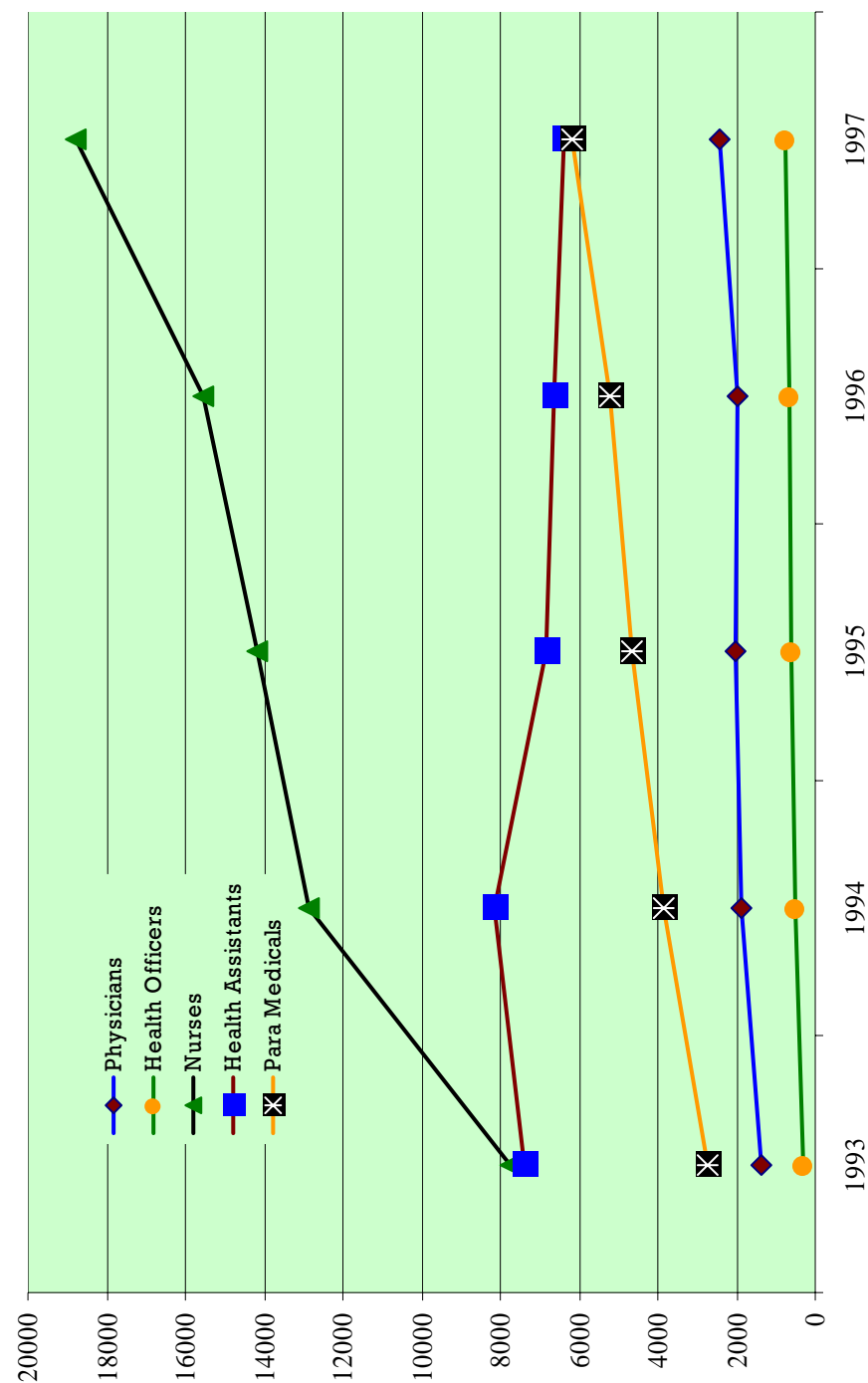
Year	Capital			
	Allocation	Expenditure	% Expenditure	% National
1988	262,300,000	153,890,000	58.7	5.0
1989	307,098,736	216,420,000	70.5	5.9
1990	354,200,000	276,910,000	78.2	6.6
1991	303,100,000	648,390,000	213.9	4.9
1992	360,537,000	176,700,000	49.0	4.8
1993	756,220,000	305,350,000	40.4	13.6
1994	503,565,585	235,100,000	46.7	8.4
1995	517,900,000	297,800,000	57.5	7.2
1996	517,810,000	378,416,000	73.1	6.4
1997	689,354,000	355,850,000	51.6	4.9

9.6 PUBLIC HEALTH EXPENDITURE PER CAPITA, 1988-1997 E.C.

Years	Population	Budget Allocation	Total Expenditure	Per Capita
1988	56,372,000	619,340,000	481,950,000	8.5
1989	58,117,000	669,688,736	549,760,000	9.5
1990	59,882,000	734,000,000	671,174,000	11.2
1991	61,672,000	781,970,000	1,104,197,000	17.9
1992	63,495,000	767,336,000	575,112,486	9.1
1993	65,344,000	1,222,330,000	749,730,000	11.5
1994	67,220,000	1,053,174,085	757,100,000	11.3
1995	69,127,021	1,538,000,000	824,400,000	11.9
1996	69,127,021	1,170,340,000	910,588,000	13.2
1997	73,043,510	1,675,443,000	1,229,670,000	16.8

Source: Ministry of Finance & Economic Development

Fig.6. Availability of Health Personnel by Selected Professional Categories



9. BUDGET ALLOCATION & EXPENDITURE

9.1 RECURRENT HEALTH BUDGET ALLOCATION & EXPENDITURE BY REGION, 1997 E.C. (2004/05)

Region	Budget	Expenditure	% Expenditure
Tigray	81,732,000	71,103,000	87.0
Afar	46,845,000	17,928,000	38.3
Amhara	134,474,000	128,241,000	95.4
Oromia	176,177,000	136,845,000	77.7
Somali	19,990,000	17,178,000	85.9
Ben-Gumuz	16,359,000	16,295,000	99.6
SNNPR	77,209,000	96,994,000	125.6
Gambella	12,861,000	10,167,000	79.1
Hareri	13,006,000	13,429,000	103.3
Addis Ababa	65,012,000	67,908,000	104.5
Dire Dawa	11,144,000	10,712,000	96.1
Federal MOH	331,280,000	287,020,000	86.6
National	986,089,000	873,820,000	88.6

9.2 CAPITAL HEALTH BUDGET ALLOCATION & EXPENDITURE BY REGION, 1997 E.C. (2004/05)

Region	Budget	Expenditure	% Expenditure
Tigray	30,730,000.00	5,750,000.00	18.7
Afar	12,494,000.00	10,030,000.00	80.3
Amhara	79,100,000.00	39,040,000.00	49.4
Oromia	165,450,000.00	41,670,000.00	25.2
Somali	11,840,000.00	18,000,000.00	152.0
Ben-Gumuz	7,520,000.00	4,530,000.00	60.2
SNNPR	84,880,000.00	2,160,000.00	2.5
Gambella	3,940,000.00	1,820,000.00	46.2
Hareri	4,180,000.00	2,750,000.00	65.8
Addis Ababa	26,660,000.00	680,000.00	2.6
Dire Dawa	4,640,000.00	5,530,000.00	119.2
Federal MOH	257,920,000.00	223,890,000.00	86.8
National	689,354,000	355,850,000	51.6

Source: Ministry of Finance & Economic Development

9.3 PUBLIC HEALTH EXPENDITURE PER CAPITA BY REGION, 1997 E.C.(2004/05)

Region	Population	Budget Allocation	Total Expenditure	Per Capita
Tigray	4,223,014	112,462,000	76,853,000	18.2
Afar	1,358,718	59,339,000	27,958,000	20.6
Amhara	18,626,047	213,574,000	167,281,000	9.0
Oromia	25,817,132	341,627,000	178,515,000	6.9
Somali	4,218,297	31,830,000	35,178,000	8.3
Ben-Gumuz	609,509	23,879,000	20,825,000	34.2
SNNPR	14,489,705	162,089,000	99,154,000	6.8
Gambella	240,394	16,801,000	11,987,000	49.9
Hareri	189,550	17,186,000	16,179,000	85.4
Addis Ababa	2,887,615	91,672,000	68,588,000	23.8
Dire Dawa	383,529	15,784,000	16,242,000	42.3
Federal MOH		589,200,000	510,910,000	-
National	73,043,510	1,675,443,000	1,229,670,000	16.8

9.4 RECURRENT BUDGET ALLOCATION & EXPENDITURE, 1982-1997 E.C.

Year	Recurrent			
	Allocation	Expenditure	% Expenditure	% National
1988	357,040,000	328,060,000	91.9	6.1
1989	362,590,000	333,340,000	91.9	6.0
1990	379,800,000	394,264,000	103.8	5.5
1991	478,870,000	455,807,000	95.2	5.6
1992	406,799,000	398,412,486	97.9	3.5
1993	466,110,000	444,380,000	95.3	4.0
1994	549,608,500	522,000,000	95.0	4.3
1995	1,020,100,000	526,600,000	51.6	7.4
1996	652,530,000	532,172,000	81.6	5.2
1997	986,089,000	873,820,000	88.6	6.6

Source: Ministry of Finance & Economic Development