

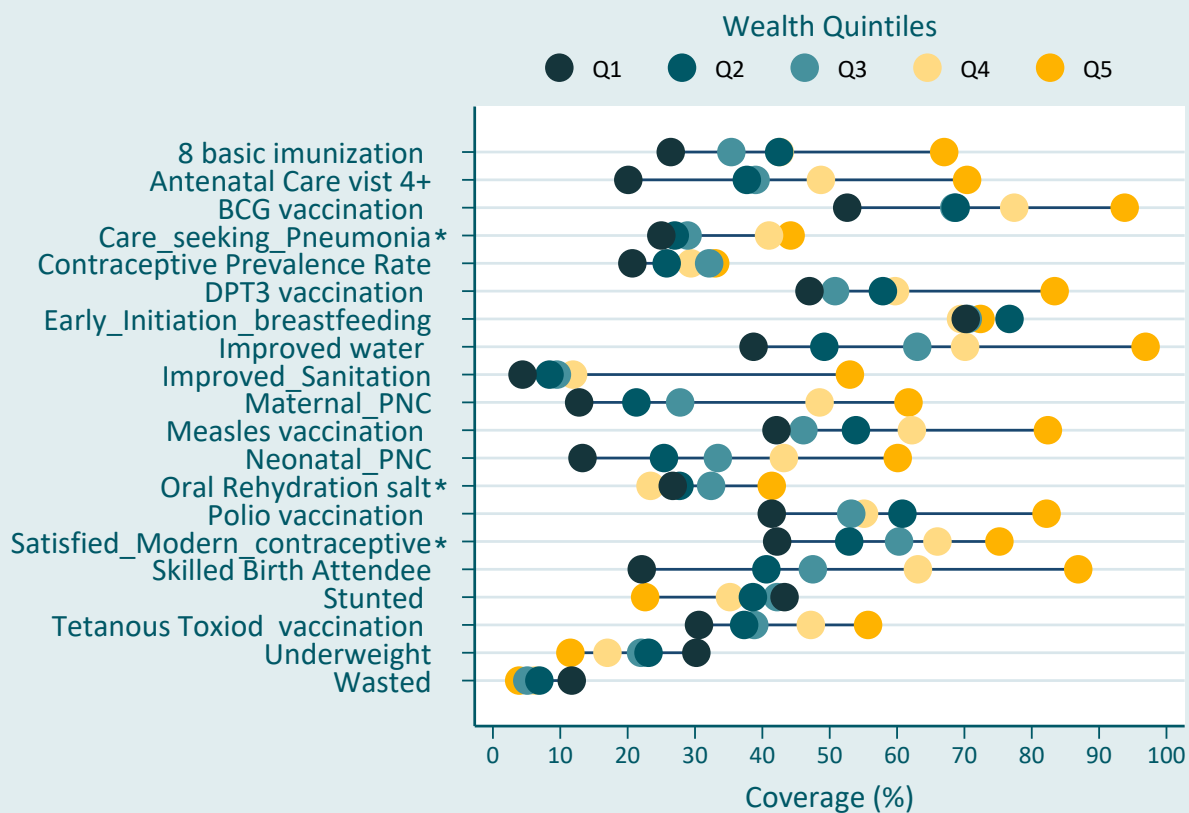
Ethiopia:

Country Health Statistics and Equity Profile, 2000-2019

December 2022

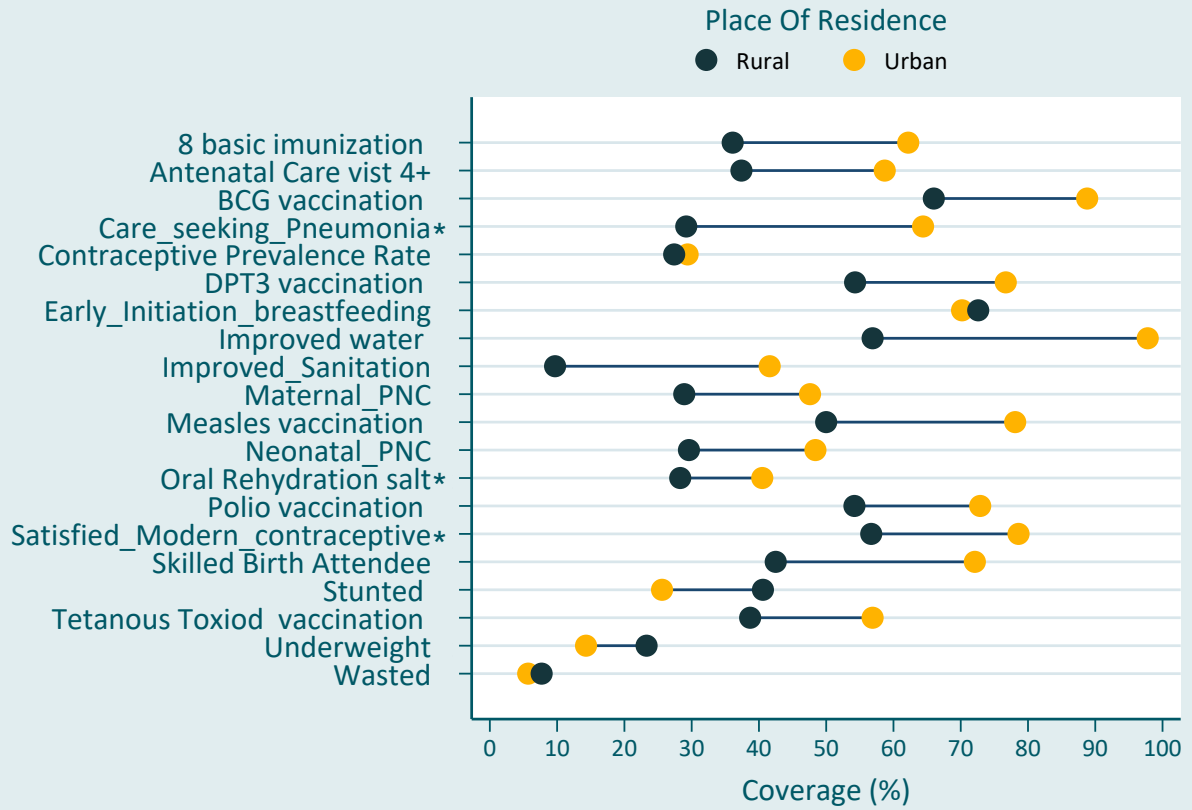


Coverage of key indicators along the continuum of care stratified by wealth quintile (Data source from and 2019)



* Data source from DHS 2016

Coverage of key indicators along the continuum of care stratified by place of residence (Data source from 2019)



* Data source from DHS 2016

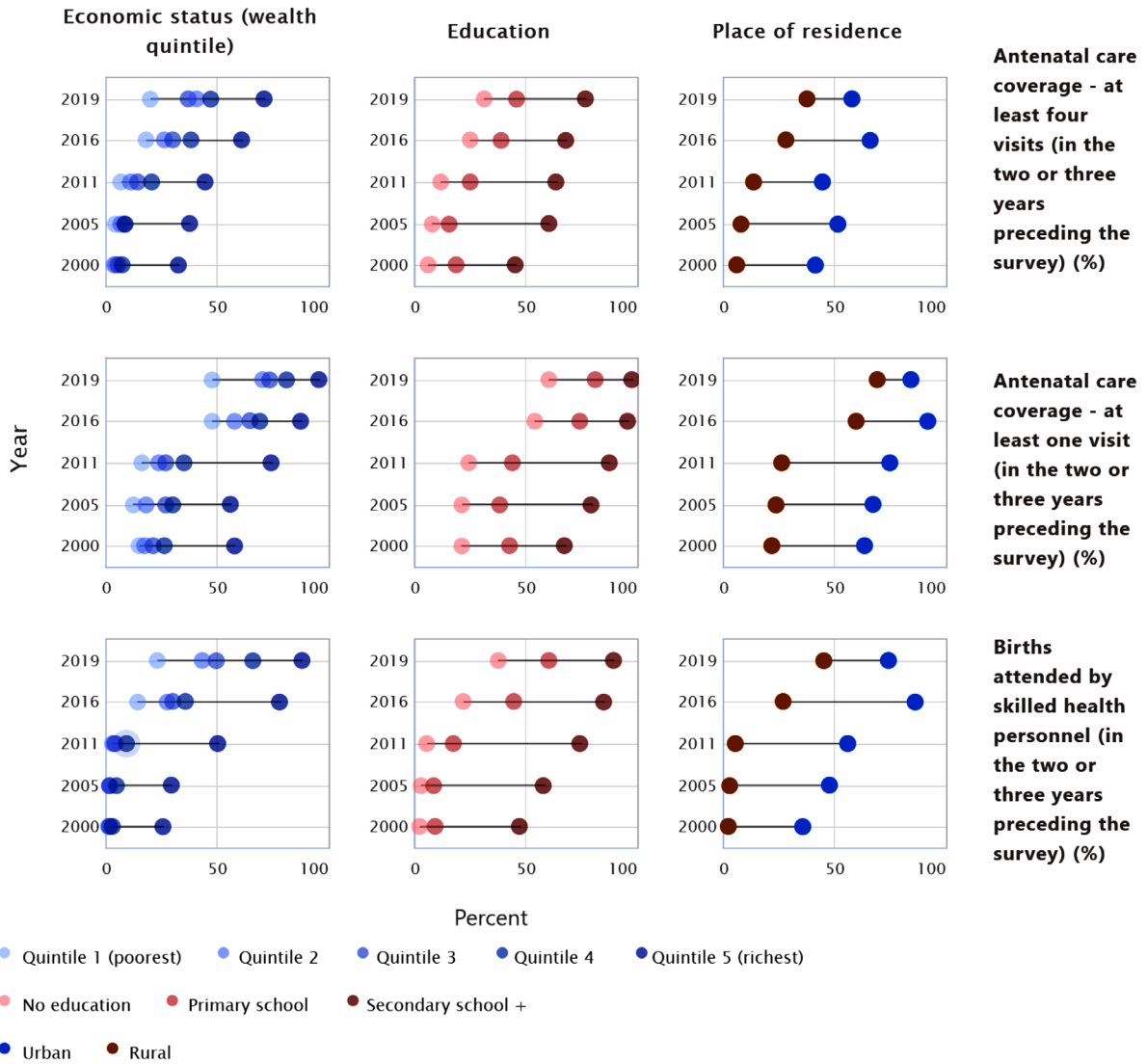
Reproductive, maternal, newborn, and child health intervention coverage by residence, education, wealth quintile and regional levels in Ethiopia, 2019

Label	≥ 80%				50-79%				<50%				No data		5 years preceding										
	Pregnancy	Birth	Postnatal	Vaccination	Childhood	Family planning	Nutrition	Environment	Mortality	Mortality	Mortality	Mortality	Mortality	Mortality	Mortality	Mortality									
Group	Antenatal+2:12 visits for pregnancy: 1	Antenatal visits 4+ visits	Assistance during delivery from a skilled provider	Tetanus protection at birth**	checkup in the first two days after birth	checkup in the first two days after birth	BCG vaccination received	DPT 3 vaccination received	Measles vaccination received	Polio 3 vaccination received	Children with ARI treatment from a health facility**	Treatment of diarrhea:ORS**	DFP satisfied by modern methods**	CPR	Children consuming vitamin A supplements**	Children stunted	Children underweight	Children wasted	breastfeeding within 1 hour of birth	source of drinking water is an improved source	households with an improved sanitation facility	Infant mortality rate*	Neonatal mortality rate*	Under-five mortality rate*	
Residence																									
Urban	1.9	58.7	72.1	72.4	47.6	48.4	88.8	76.7	78.1	72.9	64.4	40.5	78.6	49.7	59.4	26.2	15.1	5.4	70.2	87.3	41.6	32.0	21.0	46.0	
Rural	3.8	37.4	42.5	45.6	28.9	29.6	66.0	54.3	50.0	54.2	29.2	28.3	56.7	38.2	43.0	40.4	23.4	7.5	72.6	60.5	9.7	51.0	37.0	64.0	
Education																									
No education	4.6	32.4	35.2	41.3	21.8	22.1	63.4	54.4	43.7	54.5	26.7	27.9	55.5	32.3	41.4	41.7	26.1	9.3	71.5			56.0	34.0	70.0	
Primary	2.6	47.0	60.5	57.4	36.9	39.4	76.1	64.5	65.1	62.7	40.7	31.6	63.9	49	48.4	35.4	17.3	4.9	72.9			53.0	40.0	68.0	
Secondary	0.2	72.5	83.6	76.0	62.4	58.3	94.0	74.8	84.6	69.3	ND	31.7	77.3	57.2	61.8	19.0	9.4	5.7	73.6			50.0	34.0	51.0	
Higher	0.4	78.9	93.1	82.5	70.6	69.8	94.5	70.1	90.3	69.0	ND	48.0	77.1	57.5	67.4	21.6	3.4	0.2	66.2			17.0	10.0	19.0	
Wealth quintile																									
Lowest	3.9	20.1	22.1	35.8	12.8	13.3	52.6	47.0	42.1	41.4	25.0	26.7	42.2	27	40.9	43.3	30.2	11.7	70.2	36.8	4.4	58.0	34.0	77.0	
Second	4.7	37.7	40.6	43.8	21.3	25.4	68.7	57.9	53.9	60.8	27.0	27.7	52.9	35.3	41.3	38.6	23.1	6.9	76.7	56.5	8.4	62.0	41.0	73.0	
Middle	3.1	39.0	47.5	46.6	27.8	33.4	68.5	50.8	46.1	53.2	28.9	32.4	60.3	45.2	42.4	42.2	22.0	5.1	70.5	69.1	9.5	57.0	40.0	72.0	
Fourth	3.9	48.7	63.1	54.5	48.5	43.2	77.4	59.7	62.2	55.1	41.0	23.4	66	44	46.7	35.2	17.0	6.2	69.5	77.7	11.9	49.0	36.0	62.0	
Highest	0.9	70.4	86.9	69.8	61.7	60.1	93.8	83.4	82.4	82.2	44.2	41.4	75.2	53	57.9	22.6	11.5	3.9	72.4	93.1	53.0	39.0	24.0	46.0	
Region																									
Tigray	4.3	63.9	73.3	62.0	63.3	55.5	91.7	84.4	82.9	83.6	33.6	43.0	64.8	37.3	73.8	48.4	30.5	9.1	73.4	78.0	33.0	43.0	34.0	59.0	
Afar	5.0	31.1	30.6	30.2	23.5	25.8	45.6	27.0	29.6	25.0	44.3	32.9	40.3	12.7	35.0	42.2	31.1	13.5	65.6	54.3	18.6	81.0	38.0	125.0	
Amhara	3.9	50.8	55.7	44.8	39.8	41.7	79.2	77.8	71.3	75.4	29.1	28.4	72.5	49.5	48.0	41.5	27.1	7.6	61.2	67.4	18.7	67.0	47.0	85.0	
Oromia	2.5	40.6	43.7	46.7	26.1	28.1	69.7	52.9	48.7	53.8	27.1	22.5	48.9	40.7	37.7	35.3	16.3	4.3	81.5	64.9	13.5	60.0	37.0	79.0	
Somali	4.2	11.1	26.0	38.4	10.3	13.0	39.5	26.2	30.9	26.8	32.2	44.2	9.6	3.4	36.3	30.6	31.9	21.4	57.3	48.8	26.5	67.0	41.0	94.0	
B-Gumuz	2.1	55.9	65.0	53.4	45.0	44.7	85.6	77.3	76.7	74.7	ND	55.3	57.2	38.5	63.7	40.7	32.0	6.4	75.5	84.9	13.4	62.0	35.0	98.0	
SNNPR	4.1	34.1	50.1	50.9	32.0	30.0	71.4	56.3	58.2	53.0	43.2	33.3	65.3	45	47.2	36.4	20.3	6.3	68.5	71.6	10.3	65.0	35.0	88.0	
Gambela	1.5	31.8	69.9	55.4	55.1	56.0	81.8	60.4	57.6	57.2	ND	39.7	60.3	33.8	56.8	17.3	13.1	17.6	79.4	72.0	17.5	56.0	36.0	88.0	
Harari	3.2	38.8	64.7	70.1	45.1	46.9	69.6	53.6	59.9	50.9	ND	39.1	57.7	32.4	39.9	36.4	20.2	4.1	72.0	87.8	47.0	57.0	34.0	72.0	
Addis Ababa	0.7	81.8	95.7	81.5	73.5	84.4	96.3	93.1	90.6	85.8	ND	55.8	75.4	49.9	53.9	15.0	4.9	2.2	71.7	99	80	28.0	18.0	39.0	
Dire Dawa	2.9	61.5	70.8	71.5	48.2	47.8	95.5	73.6	74.5	69.0	ND	51.1	58.6	30.5	71.7	25.4	15.8	5.9	71.5	88.1	73.4	67.0	36.0	93.0	
National	3.3	43.0	49.8	49.0	33.8	34.5	73.0	61.1	58.5	59.9	31.6	29.5	60.6	41.4	44.8	36.8	21.3	7.0	72.0	68.7	19.5	61.0	38.0	82.0	

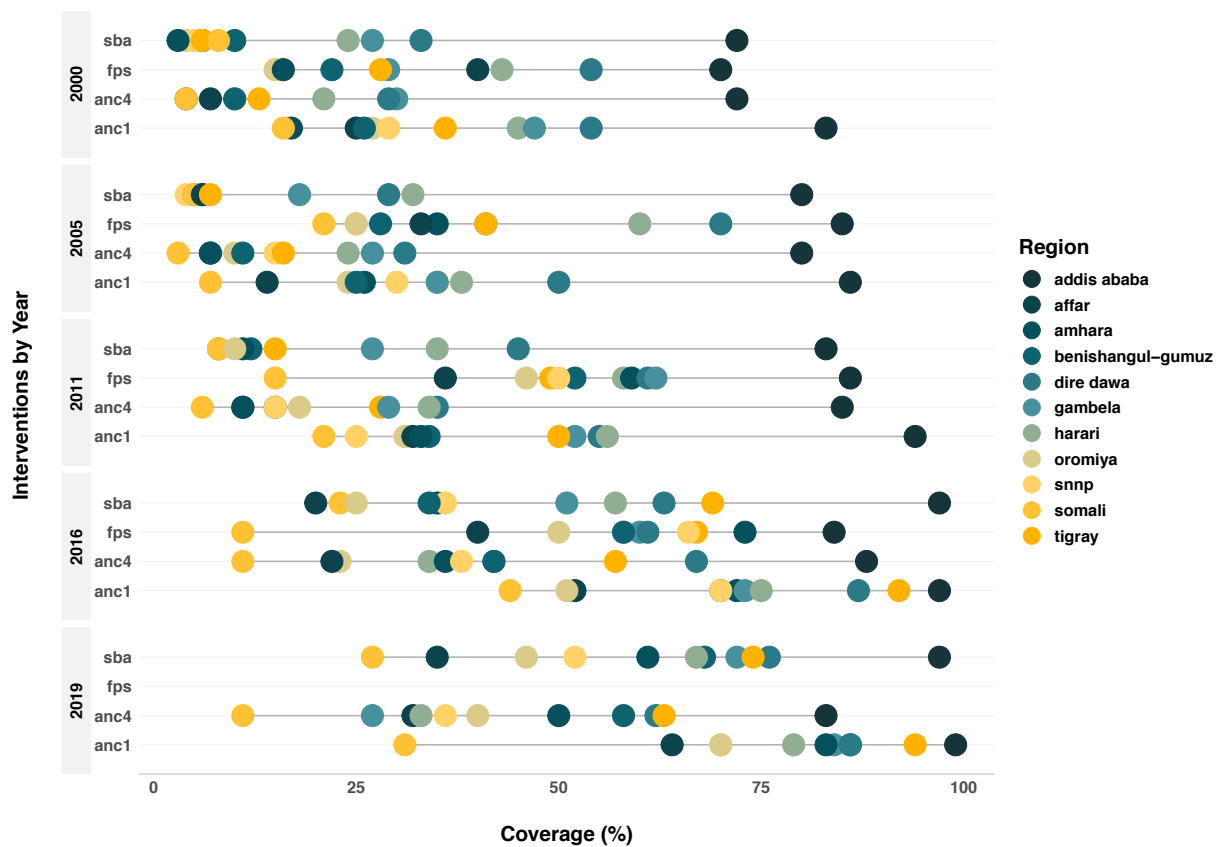
** indicate results from DHS 2016 and the rest are from Mini DHS 2019, * indicate results of ten years preceding the survey and the rest are the result of 5 years preceding

Maternal health intervention coverages stratified by wealth quintile, education level, and place of residence, 2000-2019

Ethiopia (DHS 2000, 2005, 2011, 2016, 2019)



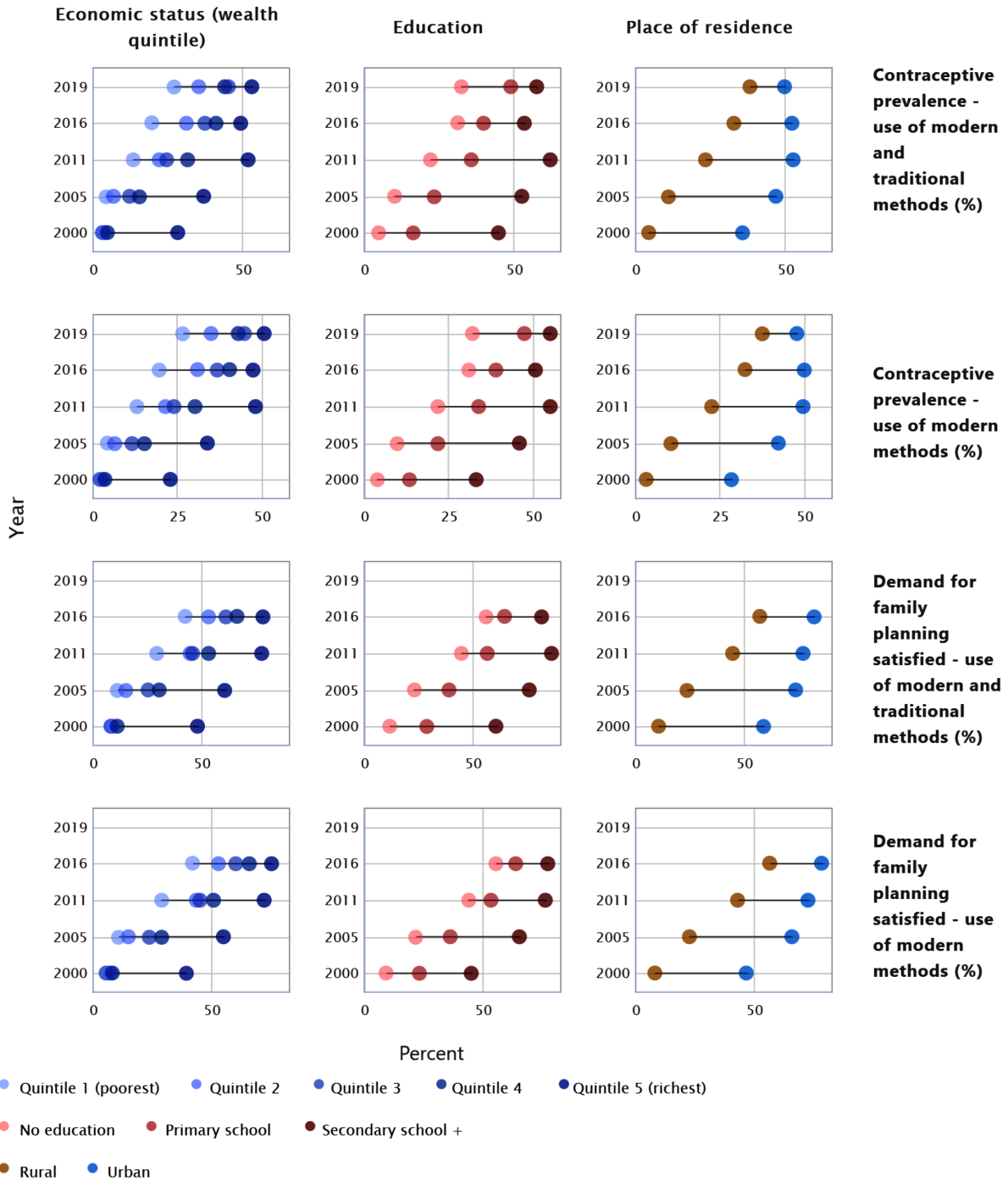
Ethiopia –Coverage of Reproductive and Maternal Health interventions by regions 2000 – 2019



Made with Equiplot Creator Tool – International Center for Equity in Health | Pelotas

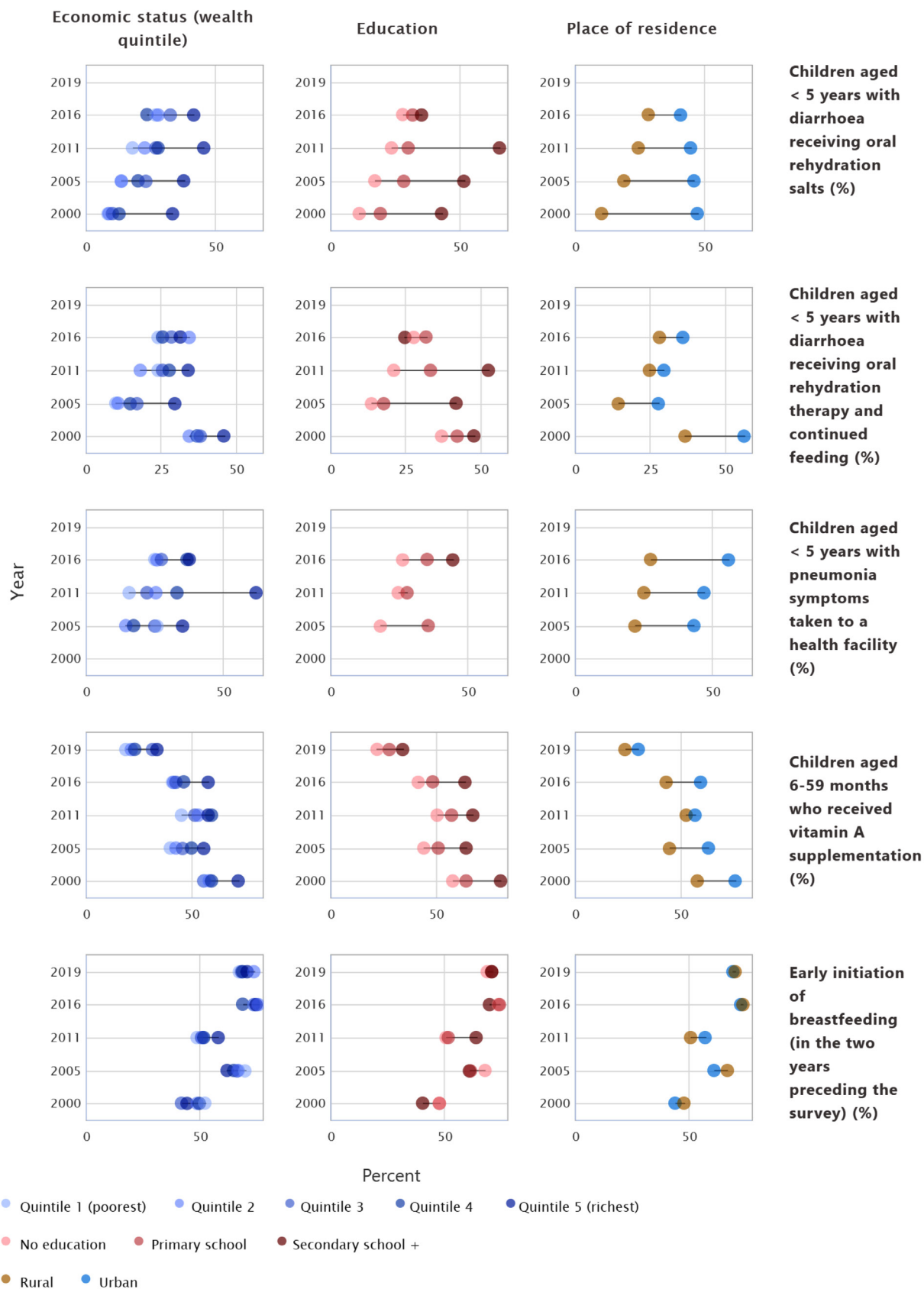
Reproductive health coverage stratified by wealth quintile, education level, and place of residence, 2000-2019

Ethiopia (DHS 2000, 2005, 2011, 2016, 2019)

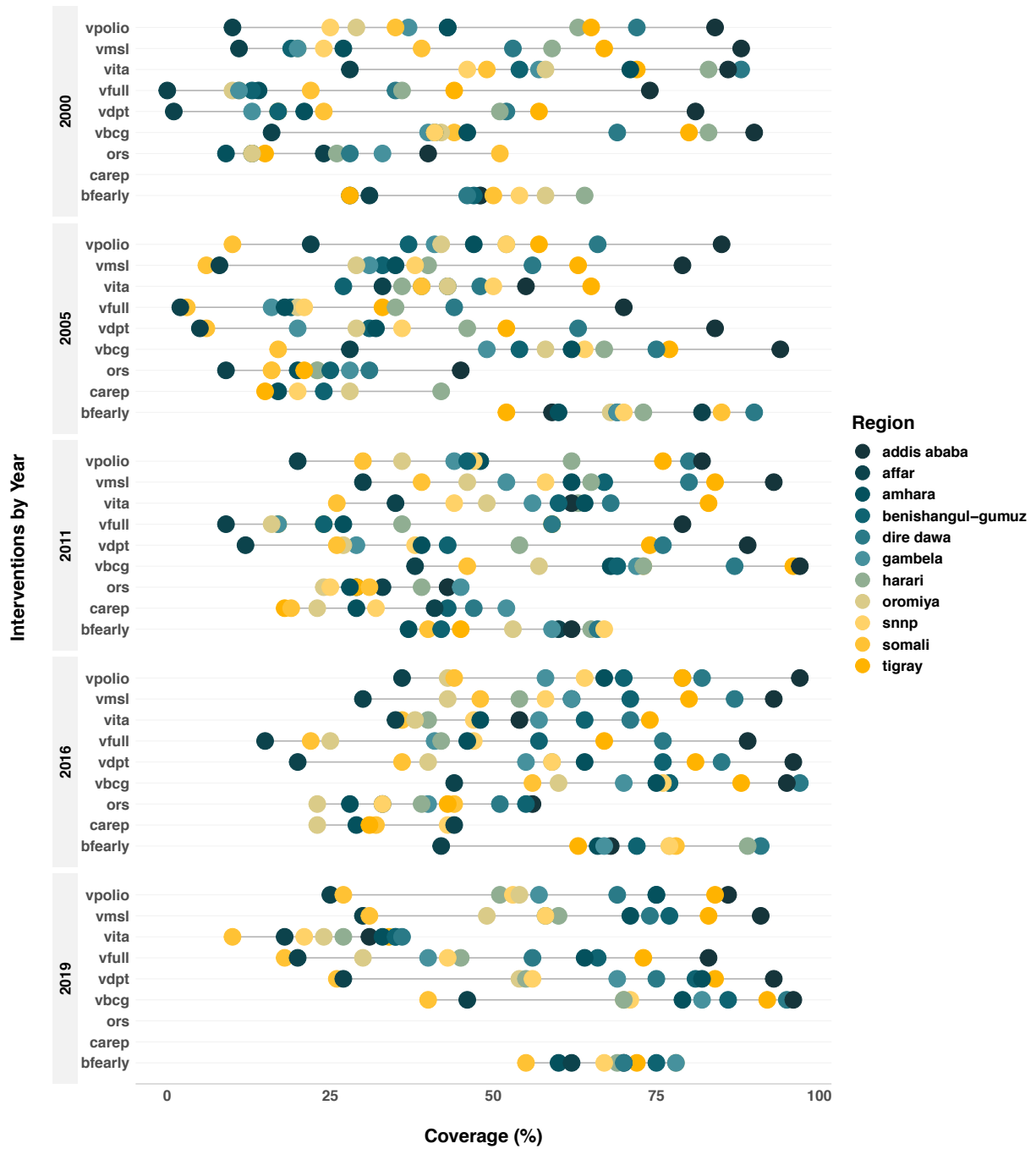


Child health intervention coverages stratified by wealth quintile, education level, and place of residence, 2000-2019

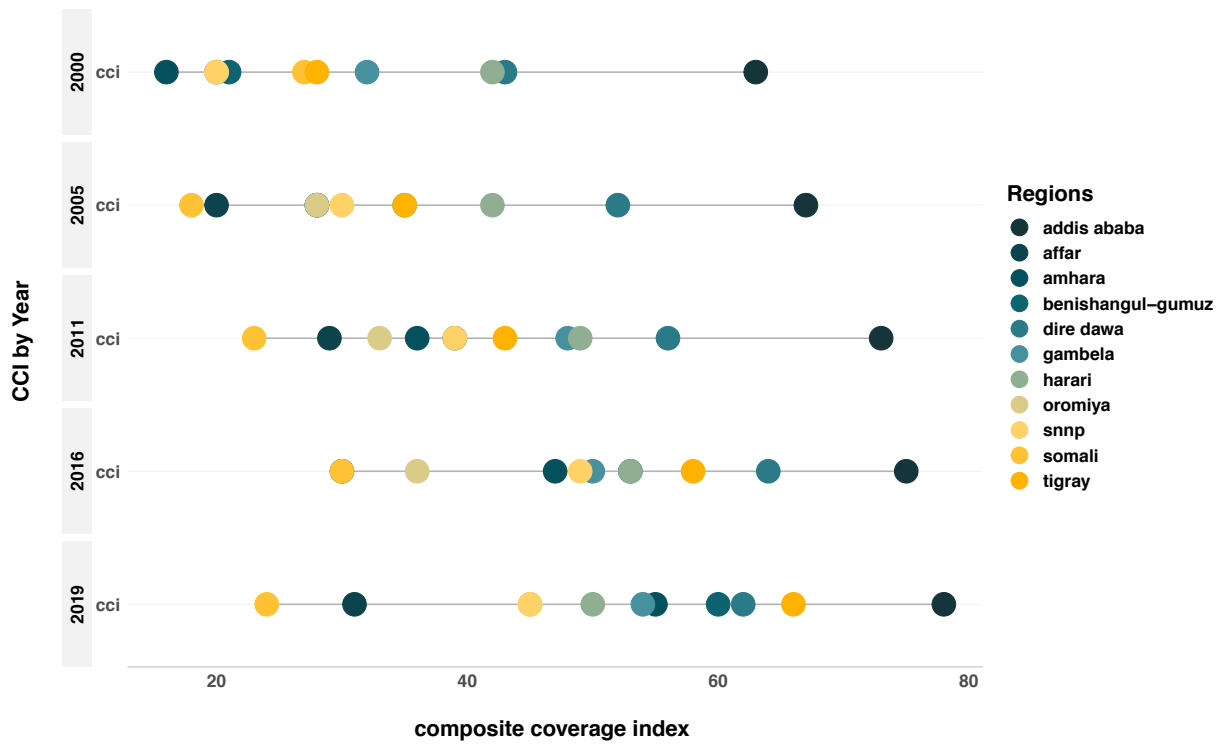
Ethiopia (DHS 2000, 2005, 2011, 2016, 2019)



Ethiopia—Coverage and Trends of Child health Interventions 2000 – 2019

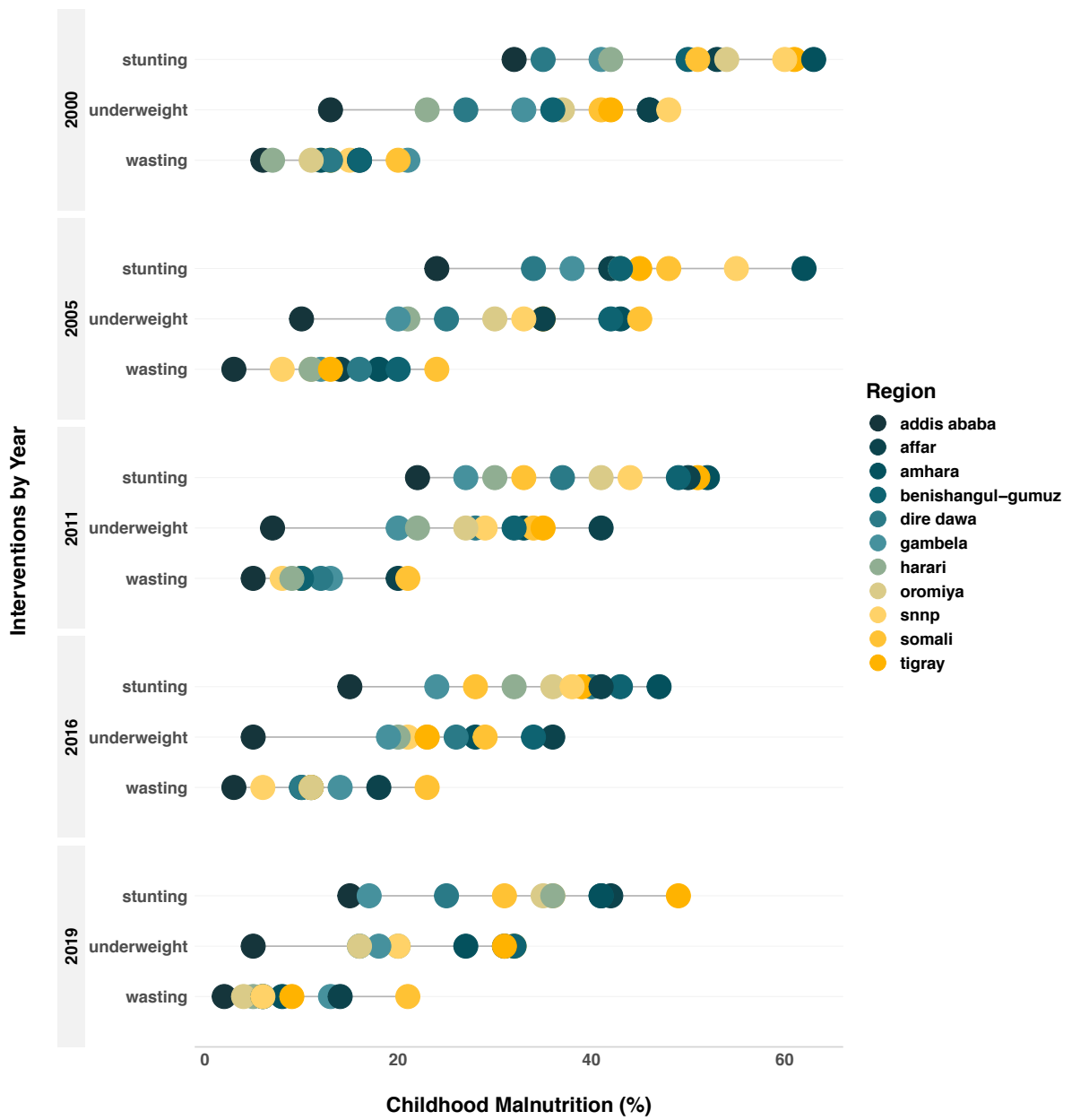


Ethiopia Trends of Composite Coverage index by regions, 2000 – 2019



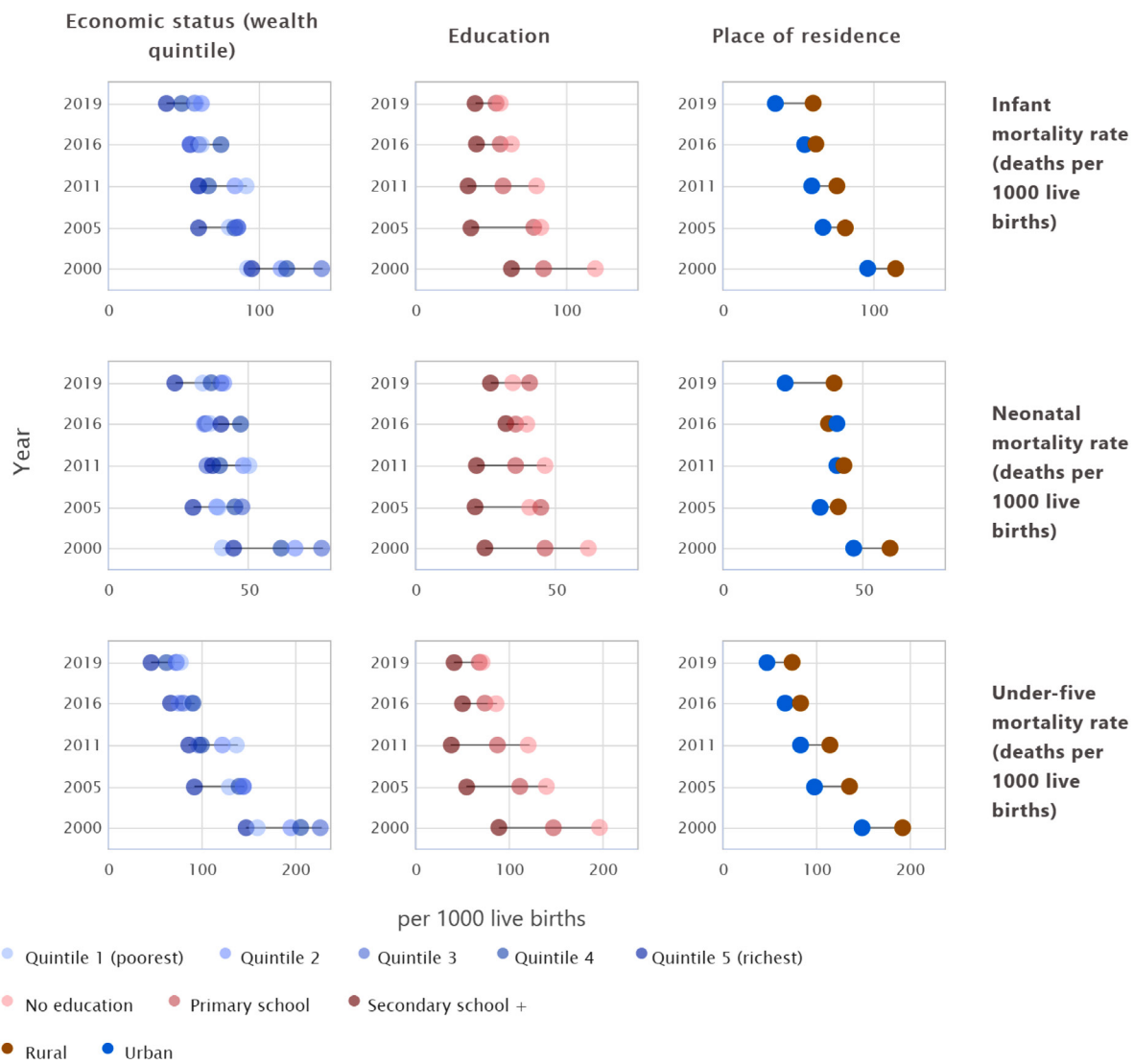
Made with Equiplot Creator Tool – International Center for Equity in Health | Pelotas

Ethiopia–Magnitude and Trends of Childhood Malnutrition by Regions, 2000 – 2019

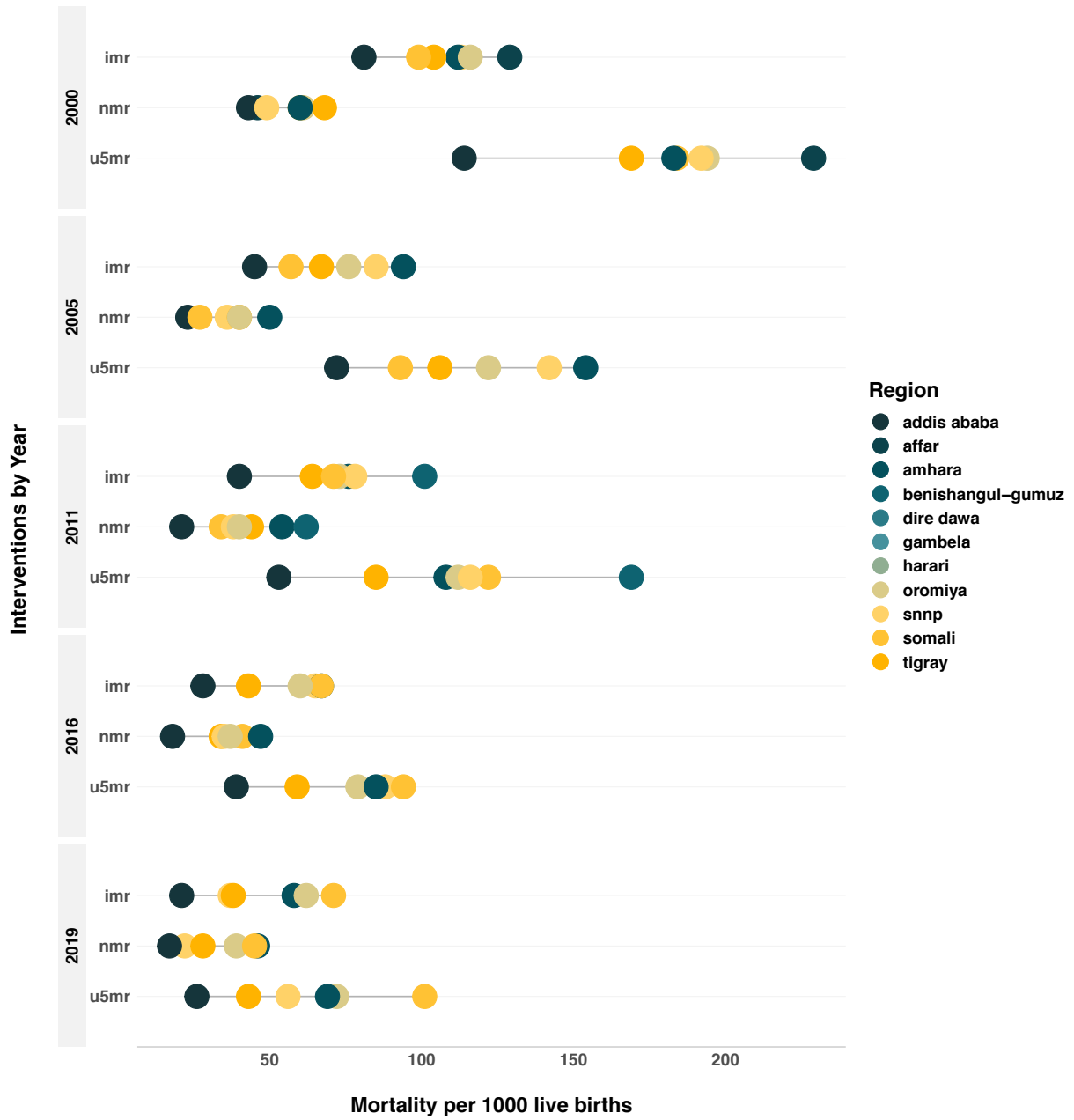


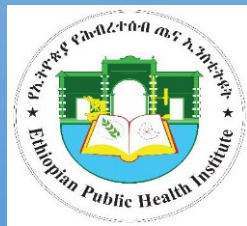
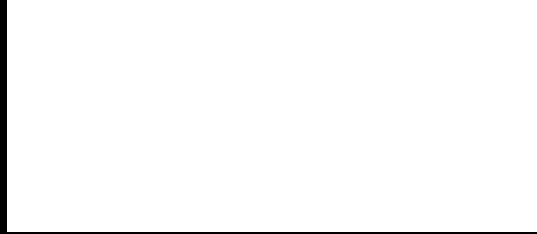
Childhood mortality stratified by wealth quintile, education level, and place of residence, 2000-2019

Ethiopia (DHS 2019, 2011, 2016, 2005, 2000)



Ethiopia–Magnitude and Trends of Childhood Mortality 2000 – 2019





Gullele Arbegnoch Street, Gullele Subcity, Addis Ababa, Ethiopia

Telephone +251.11.275.4647; Fax +251.11.275.4744;

Web site: <https://ephi.gov.et>