

Ethiopia's Primary Health Care System:

Observations from a Recent Visit

Henry Perry

6 November 2014

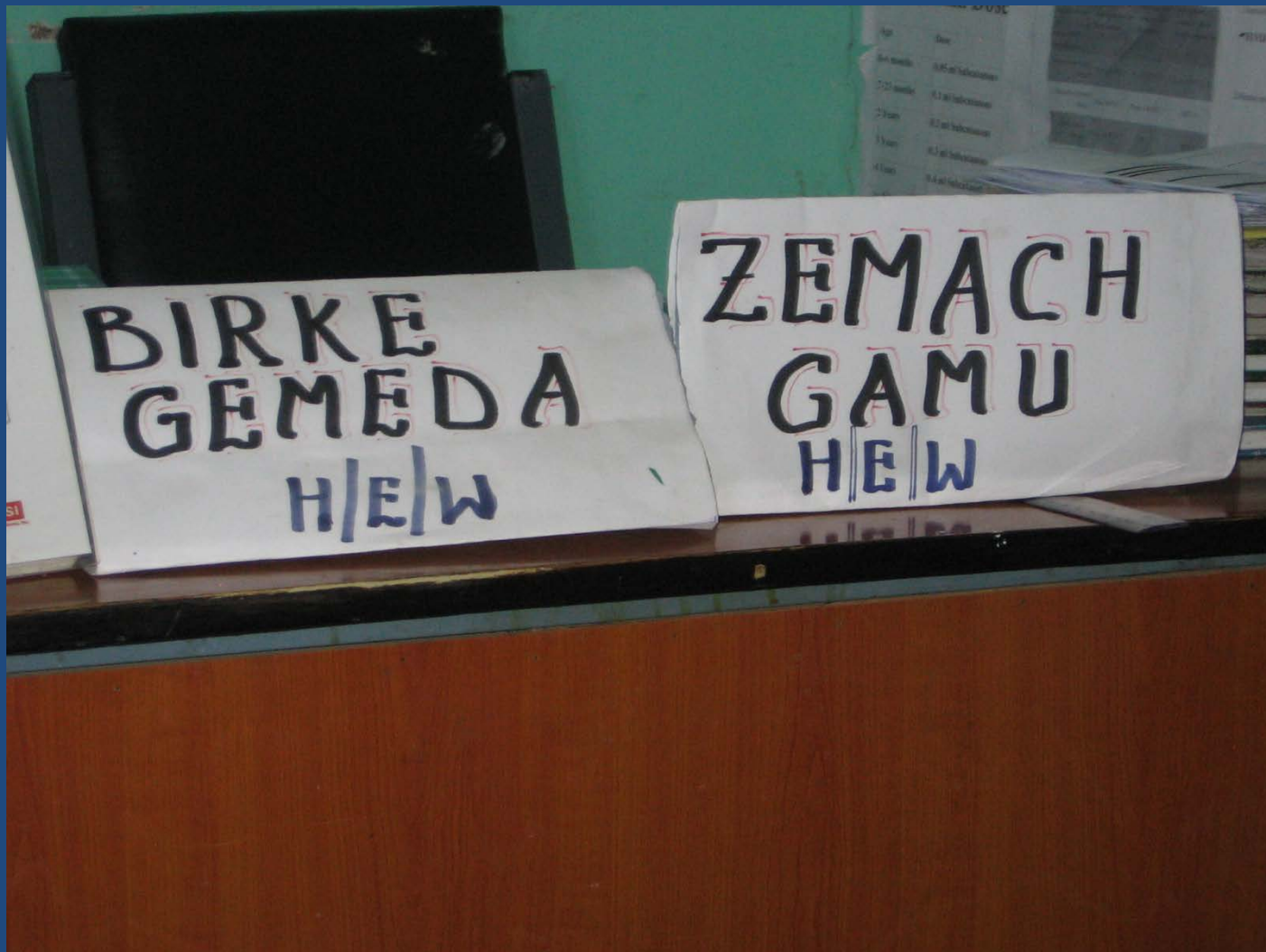
The Ethiopian countryside near Addis Ababa



A Health Post



The names of two Health Extension Workers based at the Health Post



BIRKE
GEMEDA
H/E/W

ZEMACH
GAMU
H/E/W

The two Health Extension Workers



Every household has a family health folder



Coverage of all services has increased

No	Activities	2003			2004			2005			2006			2007		
		Plan	Actual	%	Plan	Actual	%	Plan	Actual	%	Plan	Actual	%	Plan	Actual	%
1	ANC	135	91	67	119	122	102	139	139	100	132	79	60			
2	PMTCT	135	11	8	119	17	14	139	23	16	132	65	49			
3	DELIVERY	90	22	24	92	62	67	45	32	71	120	83	69			
4	PNC	135	139	102	119	110	92	139	110	79	120	108	90			
5	FP(All methods)	656	287	44	614	267	52	616	477	77	653	506	77			
6	Pills		35			35			80			74				
7	DEPO		233			202			361			418				
8	Implanon		19			30			35			12				
9	REFERRALS					1			1			2				

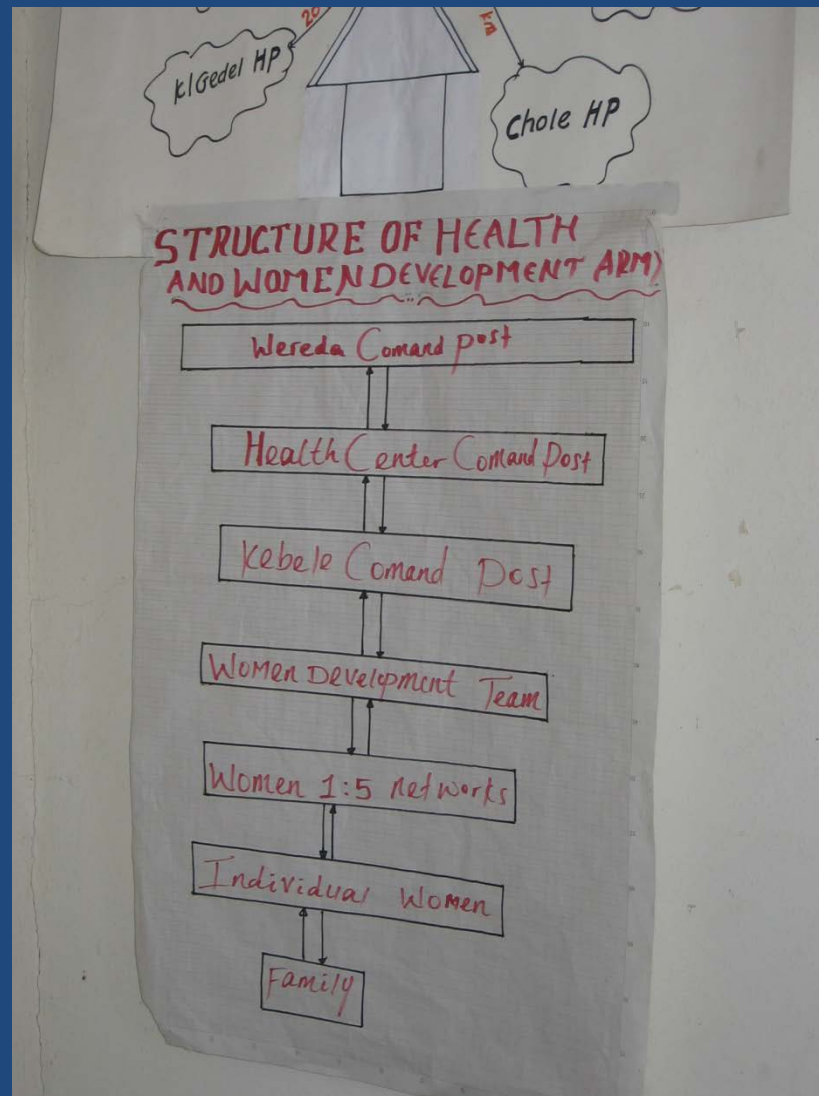
DEPO	160	202	361
------	-----	-----	-----

The years are based on the Ethiopian calendar and are current

Patients waiting at the Health Post



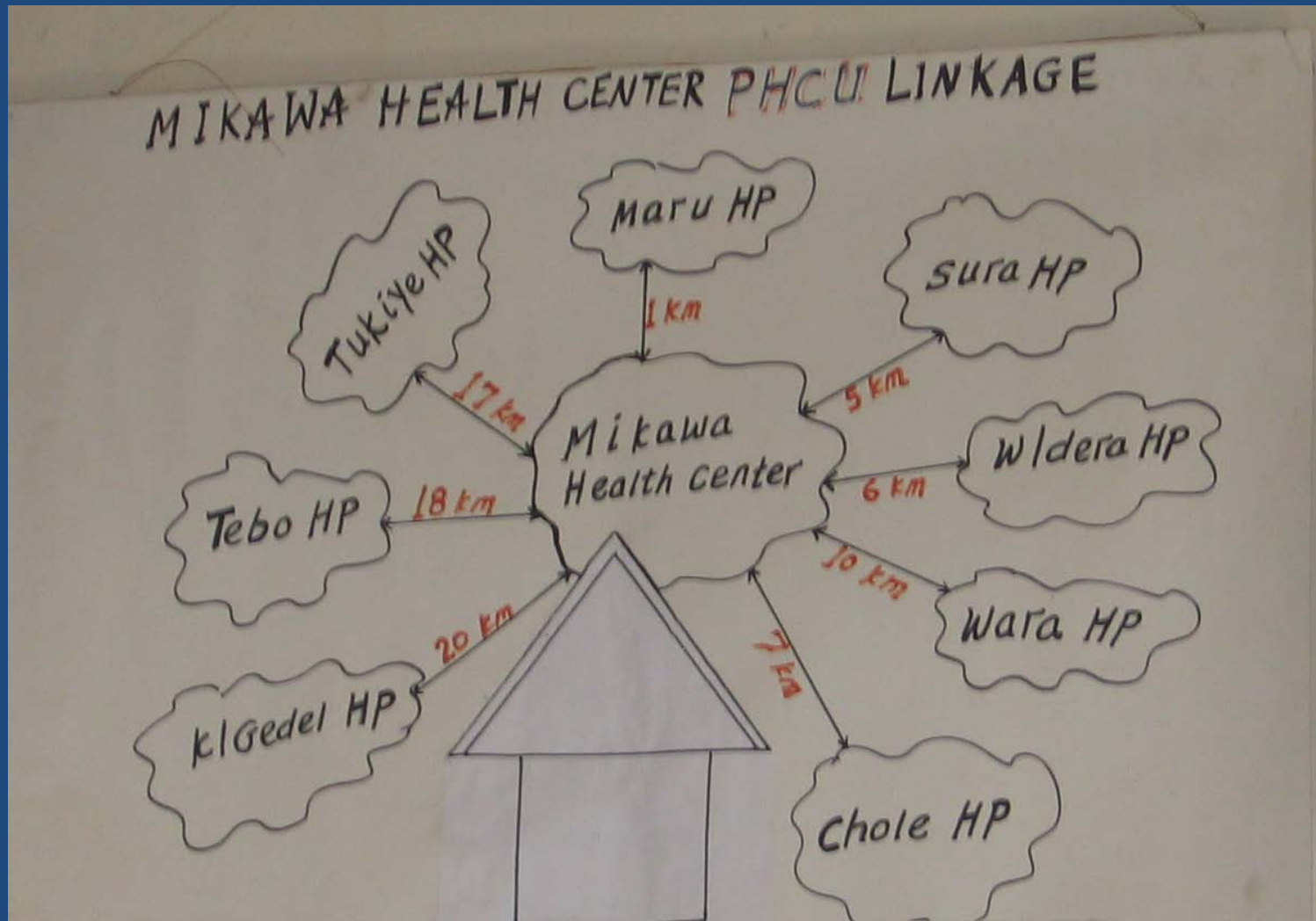
Support structure for the Health Development Army



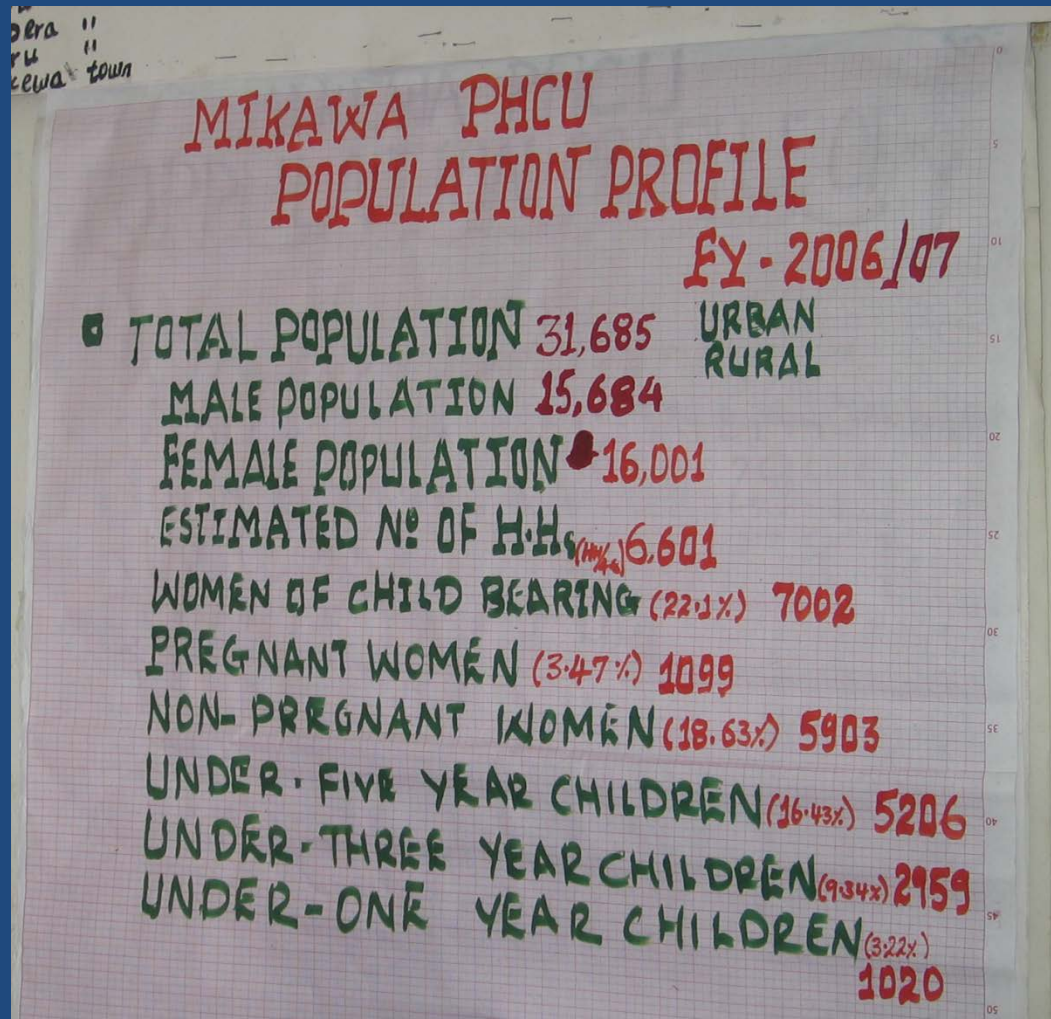
A Health Development Army volunteer bringing a family for meningitis immunization



The Mikawa Primary Health Care Unit



The Mikawa Primary Health Care Unit population composition



Registration area at the Primary Health Care Center



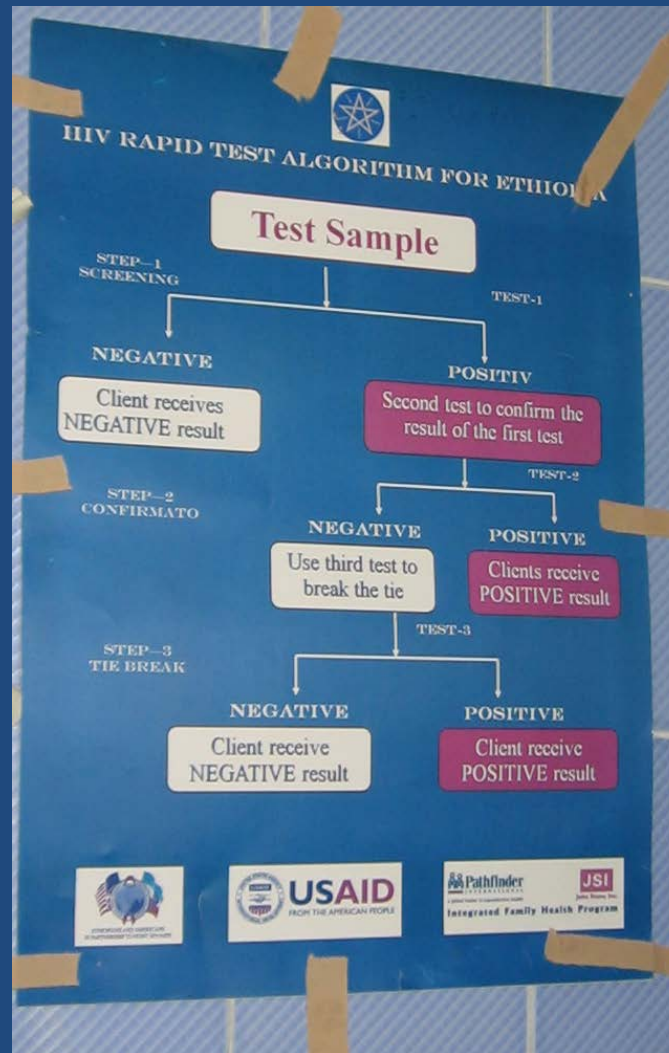
Nurses at the Primary Health Care Center



Delivery room at the Primary Health Care Center



Protocol for testing pregnant women for HIV



The new maternity waiting home



Women and their children waiting to be seen at the Primary Health Care Center



Women and their children waiting to be seen at the Primary Health Care Center



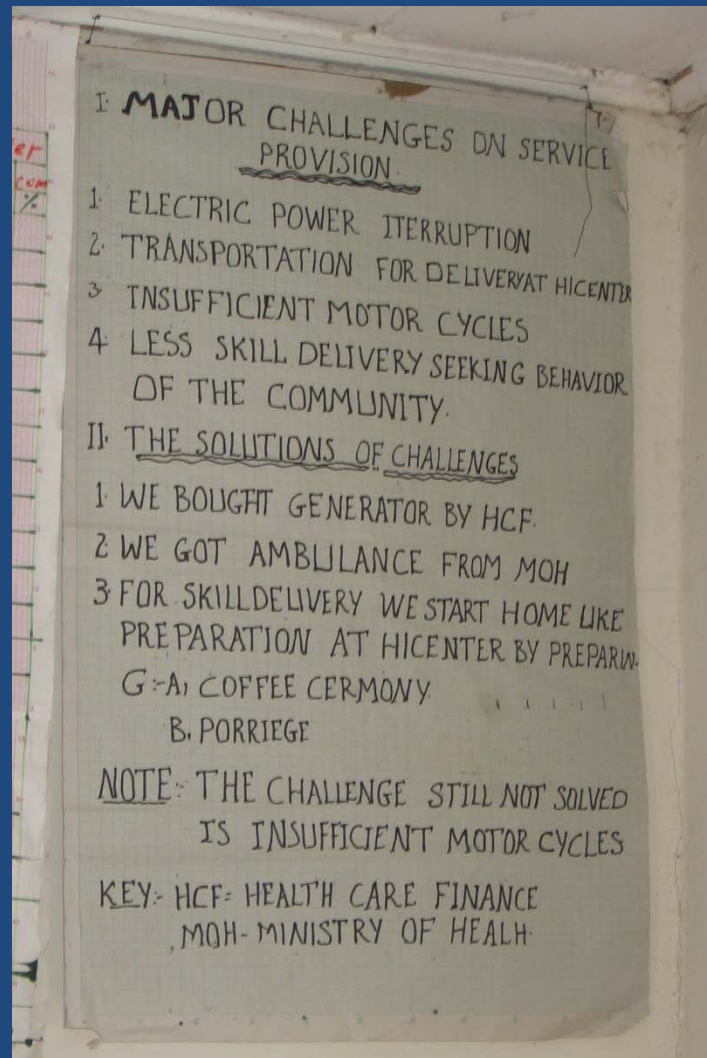
Mother and child at the Primary Health Care Center



Patients waiting at the Primary Health Care Center



Challenges and solutions at the Primary Health Care Center



An overview of the Ethiopian health system

SUPPORTING ANALYSIS: DISTRIBUTION OF NEED AND RESOURCES ACROSS THE ETHIOPIAN HEALTH SYSTEM

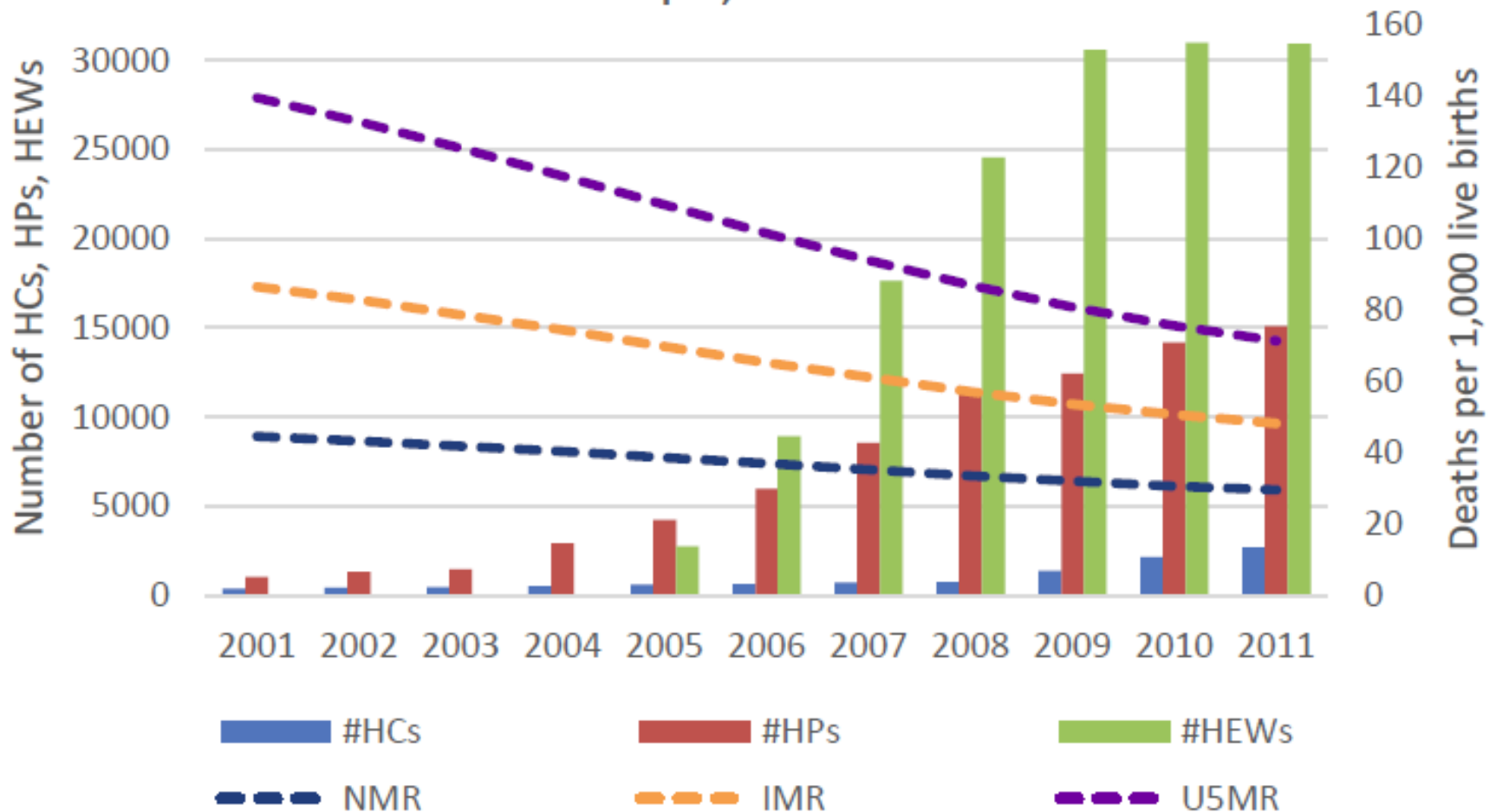
Health care delivery system		No. of public facilities	Catchment area pop.	Burden	Type of maternal & child health services offered
<i>Region</i>	Specialized hospitals	XX	3.5 to 5 million		<ul style="list-style-type: none"> Specialized hospitals serving the entire country; referral site for general hospitals
	General Hospitals	XX	1 to 1.5 million		<ul style="list-style-type: none"> In-patient and ambulatory services; referral site for primary hospitals
<i>District (Woreda)</i>	Primary Hospitals	82	60 to 100,000		<ul style="list-style-type: none"> Provides all HC services plus: comprehensive emergency obstetric and newborn care, cesarean section, blood transfusion services, and other referral services
<i>Sector (Sub-Woreda)</i>	Health Center	1,332	25,000		<ul style="list-style-type: none"> Provide curative services, administrative support for services provided by health stations and posts One health center per woreda provides CEmOC services Serve as referral and supervisory center for HEWs
Primary Health Care Unit	Health stations*	1,517	15 to 25,000		<ul style="list-style-type: none"> Services provided are similar, albeit reduced from, that by Health Centers.
	Health posts	12,488	5,000		<ul style="list-style-type: none"> Largely prevention services including: bed nets, sanitation, breastfeeding, safe & clean delivery, basic ANC and PNC, immunization, family planning, management of childhood illnesses, and health education
<i>Kabele</i>					
<i>Village</i>	Health Extension Workers	>34,000	2,500		<ul style="list-style-type: none"> Health education, hygiene & sanitation, FP, ANC, clean delivery & essential newborn care, PNC, growth monitoring, RDT and treatment for malaria, treat diarrhea with ORS, pneumonia treatment, deworming, vitamin A, first aid, immunization
	Health Development Army Members	>1,500,000	5 households		<ul style="list-style-type: none"> Provide health education to 5 households

Table 24.4 Ratio of Health Human Resources in Public Sector to People in Ethiopia, 2001/02–2008/09

Category	2001/2002	2004/2005	2008/2009
All physicians	1:35,603	1:35,604	1: 34,986
General practitioners	1: 54,385	1:58,203	1:76,302
Health officers	1:138,884	1:104,050	1: 20,638
Nurses (excluding midwives), BSc and diploma	1:5,613	1: 4,980	1: 4,895
Midwives (senior)	1:77,981	1: 55,782	1: 57,354
Health extension workers	n.a.	1: 23,775	1: 2,437

Ethiopia's progress in reducing under-5 mortality and expanding community-based services through the Health Extension Program

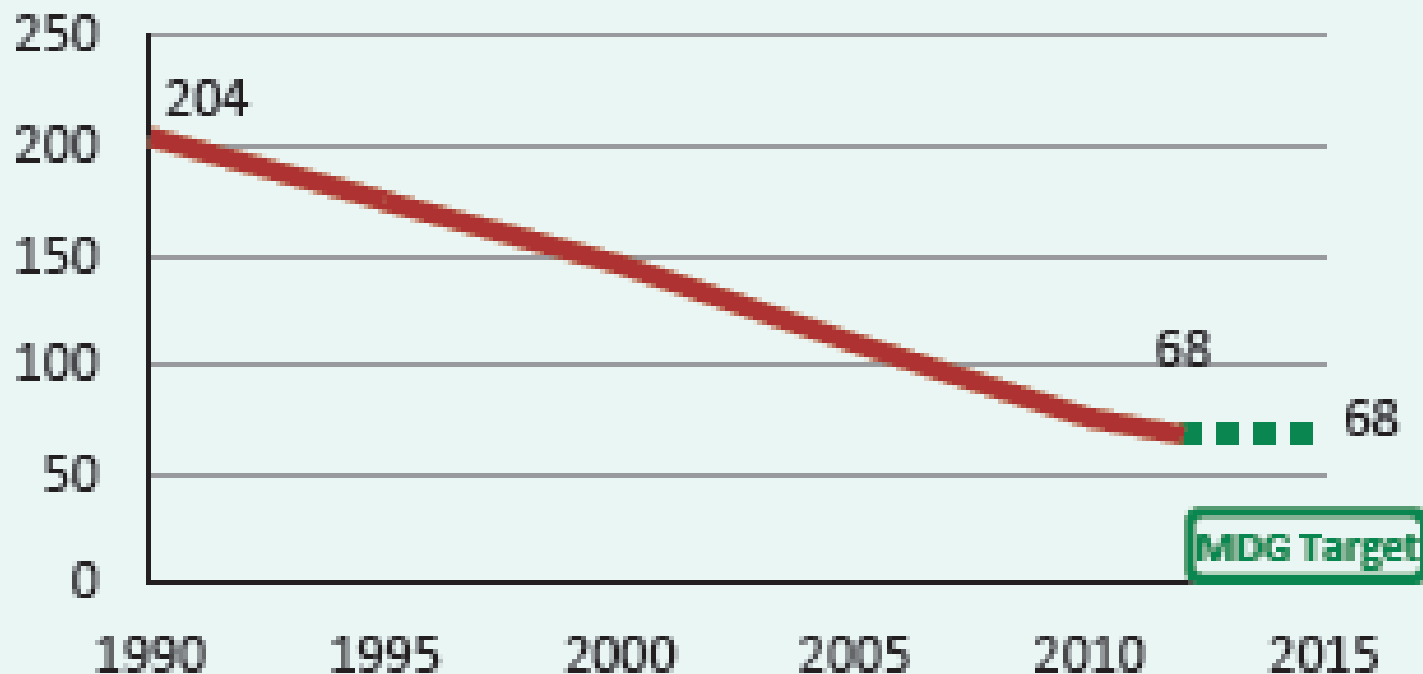
Trends in child health indicators in relation to HEP expansion
Ethiopia, 2000-2011



Ethiopia's progress in reducing under-5 mortality

Under-five mortality rate

Deaths per 1000 live births



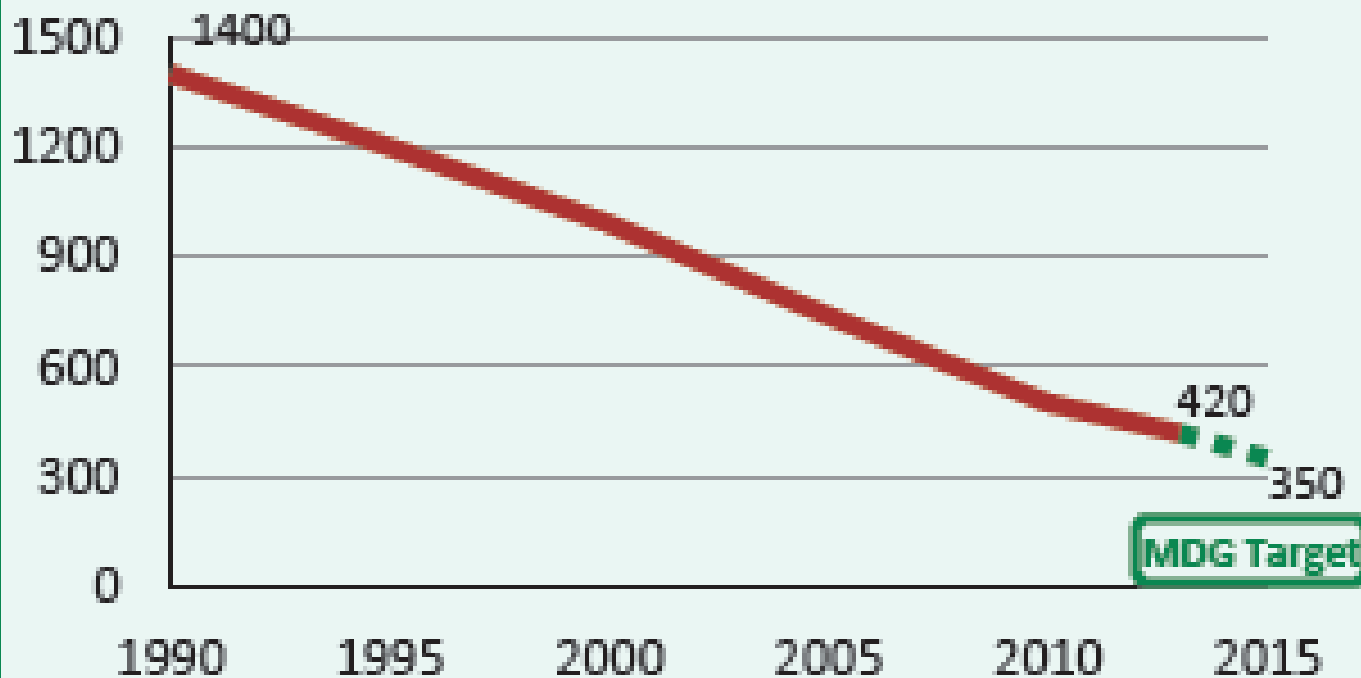
Source: IGME 2013

Source: 2014 Countdown Report

Ethiopia's progress in reducing maternal mortality

Maternal mortality ratio

Deaths per 100,000 live births



Source: MMEIG 2014

Source: 2014 Countdown Report

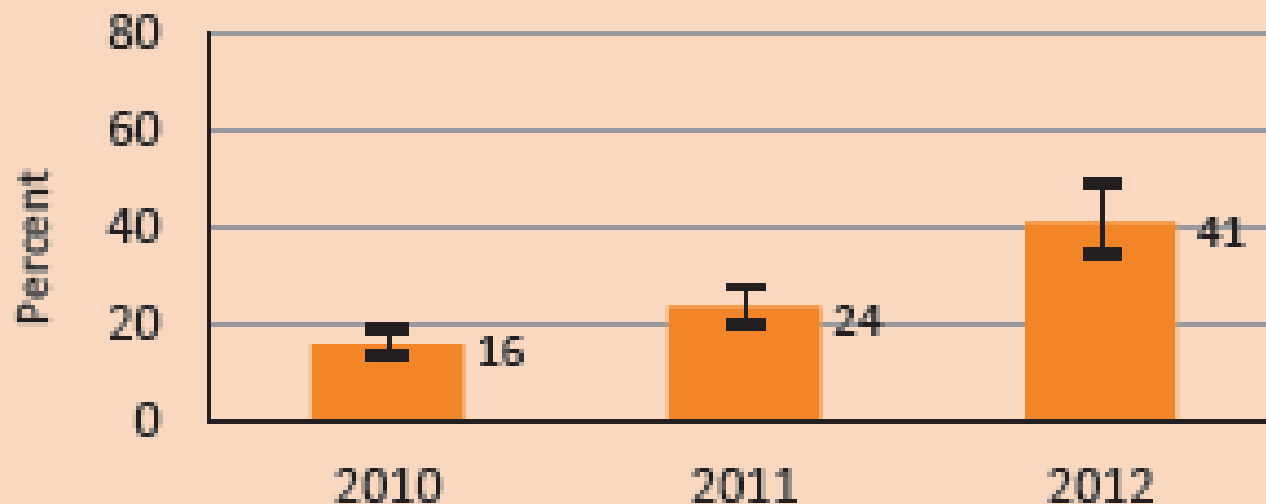
Ethiopia's progress in expanding treatment of pregnant women to prevent mother-to-child transmission of HIV

Prevention of mother-to-child transmission of HIV

Eligible HIV+ pregnant women receiving ART for their own health (% of total ARVs) 38 (2012)

■ Percent HIV+ pregnant women receiving ARVs for PMTCT

▬ Uncertainty range around the estimate



Source: UNICEF/UNAIDS/WHO 2013

Ethiopia's progress in expanding contraception usage

TABLE 1 Percentage of currently married women aged 15–49, by modern contraceptive method used, Ethiopia, 2000–11

Variable	2000	2005	2011
Injectable	3.1	9.9	20.8
Implant	0.0	0.2	3.4
Pill	2.5	3.1	2.1
Female sterilization	0.3	0.2	0.5
IUD	0.1	0.2	0.3
Condom	0.3	0.2	0.2
LAM	na	0.2	na
Total	6.3	13.9	27.3

na = Not available. LAM = Lactational amenorrhea method.

SOURCE: Ethiopian Demographic and Health Surveys, 2000, 2005, 2011.

Source: Olson et al., *Stud Fam Plann* 2013.

Comment from a Ministry of Health official

“Community ownership of PHC is our secret.”